

crops as soon as they come up. The full growth of most species is completed by the first week in July, when the caterpillar forms a cell in the earth and changes to a chrysalis, from which the moth appears about a month later.

#### REMEDIES—CLEAN CULTURE.

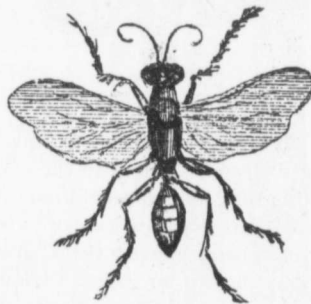
As the young caterpillars of many species hatch in autumn, the removal of all vegetation from the ground as soon as possible in autumn deprives them of their food supply and also prevents the late-flying moths from laying their eggs in that locality. Fields or gardens, which are allowed to become overgrown with weeds or other vegetation late in the autumn, are almost sure to be troubled with cut worms the next spring.

#### NATURAL REMEDIES.

There are two enemies which deserve especial notice, and, from the good service they do, should be known by sight to every cultivator. They are the Fiery Ground-beetle or Cut Worm Lion (*Calosoma calidum*, Fab.)—Fig. C—and the Black Ground Wasp (*Ammopila luctuosa*)—Fig. D. Both of these are desperate enemies of cut worms, the former feeding on them in all of their stages, the latter digging them out and storing its nest with them as food for its young grubs.



(FIG. C.)



(FIG. D.)

#### BANDING AND WRAPPING.

It will be found to well repay the trouble and expense to place a band of tin around each cabbage or other plant at the time of setting out. These may very easily be made by taking pieces of tin six inches long and two and half wide, and bending them around a spade or broom handle so as to form short tubes. In placing them around a plant the two ends can be sprung apart to admit the plant, and then the tube should be pressed about half an inch into the ground. This will be found a useful means of disposing of empty tomato and other cans. To prepare these easily, they need only be chrown into a

bonfire, unsold with a j

Put of water tion, w crosswa the last will, at ate the will kil be repea

By e any oth paper sh the surf

By c the vicin places of

This in the ea and pea reddish v duced in the apple causes t maturely perfect i Downing and Fru "is a sn wings gr brown s margin. in the gro warm ev lay their blossom fruit, esp kinds of i