



"BUILD TO-DAY THEN,
STRONG AND SURE,
WITH A FIRM AND
AMPLE BASE."
—Longfellow.

DO YOU?

WISH THUS TO BUILD
an advertisement
in the
CONTRACT-
RECORD,
TORONTO
will bring you
tenders from the
best contractors.

NEW & 2ND
ILLUSTRATED
CATALOGUE
FREE
MACHINERY
H. W. PETRIE
TORONTO, CANADA

USE
SPUNNERS
HONOR BRIGHT
COPPERINE
BEST MACHINERY BOX-METAL EXTANT.
CANADIAN MADE & STUMPS THE WORLD.
QUALITY TO DO ALL YOUR WORK.
HARDWARES ALL SELL IT.
EASY AS AN OLD SHOE
GENUINE SAFEGUARD
FOR ENGINEERS
HIGH CLASS
METAL

Patented Solid Web Wood Split Pulley

Alexander Thomson, Bamboo and Art Furniture
Manufacturer, Hamilton, writes:

"I find your Wood Split Pulleys give entire satisfaction. They do not slip, and are very handy to put on. I have had from twenty to twenty-five years' experience in pulleys, and I find none so satisfactory as yours, and am sure they will meet with success."

The CANT BROS. CO., Ltd.

Wood-working Machinery of all kinds
GALT, ONT., CANADA

Napanee Cement Works, Ltd.

JAPANEE MILLS, ONT.

MANUFACTURERS OF

STAR BRAND OF PORTLAND CEMENT

NONE BETTER; AND OF

NAPANEE CEMENT

PARTICULARLY ADAPTED FOR DAMS, SMOKE-STACKS, FOUNDATIONS, CULVERTS, CISTERNs, CELLARS, ETC. LARGELY BEING USED IN THE ST. LAWRENCE RIVER CANAL. ENDORSED BY LEADING RAILWAYS AND CONTRACTORS.

F. REDDAWAY & CO.
MANUFACTURERS OF

BREAKING STRAIN 6 IN. "CAMEL" HAIR BELT 14,181 lbs.
" " 6 IN. ENGLISH OAK DOUBLE LEATHER ... 7,522 "

ALSO MANUFACTURERS OF
LINEN FIRE HOSE
MANCHESTER, ENGLAND. 57 ST. FRAS. XAVIER ST. MONTREAL

ROBIN & SADLER
MANUFACTURERS OF
Leather Belting
SPECIALTIES
DYNAMO BELTS
WATERPROOF BELTING
MONTREAL TORONTO
2518 & 2520 NOTRE DAME ST. 129 BAY ST.
Send for sample of our new SAWMILL BELT

H. G. ROSS & CO.

Real Estate, Fire and Life Insurance

SHIPPING AND GENERAL COMMISSION AGENTS

... TIMBER LIMITS AND FARMING LANDS A SPECIALTY. ...

A. H. C. CODE: "ROSS" NEW WESTMINSTER, B.C.

CORRESPONDENCE SOLICITED ... BOX 273

A PARTNER'S DEATH

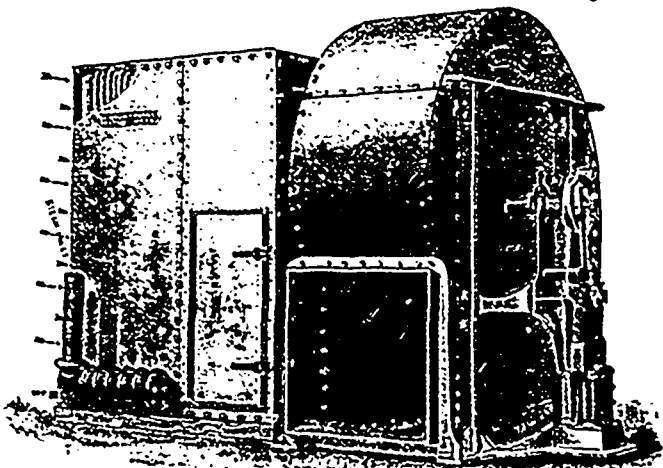
IN every partnership there are two factors of great importance—the managing brain and the capital employed—and if death removes either the business must suffer. It often happens that the brains belong to one man and the capital to another. If the manager dies the capital is worth less than before, and if the capitalist dies and his capital is withdrawn, the manager is crippled. It is clear that each has an insurable interest in the life of the other, because the profits of each depend in part upon the life of both. The firm should, therefore, insure for the benefit of the business on either the ten-twenty plan or the modified natural premium life of the Manufacturers'. These are the plans best adapted to suit the requirements of such cases. Let this statement be tested by comparison.

The Manufacturers' Life Ins. Co.

Corner Yonge and Colborne Sts., Toronto

The Sturtevant System OF Heating and Ventilating

Applicable to all classes of Buildings



The Sturtevant Steam Heating and Drying Apparatus

Progressive Lumber Dry-Kilns

STEEL PLATE
PLANING MILL EXHAUSTERS

SEND FOR CATALOGUE

B. F. STURTEVANT CO., Boston, Mass., U.S.A.

BRANCHES:

91 LIBERTY ST., NEW YORK; 16 SOUTH CANAL ST., CHICAGO; 135 NORTH THIRD ST., PHILADELPHIA

A. R. WILLIAMS, Toronto and Montreal, Gen. Agent for the Dominion