

STATISTICS FOR BRITISH COLUMBIA LABOR

496 firms in British Columbia with an aggregate payroll of 58,468 persons, reported that as compared with their returns for the week ending July 17, they had decreased their staffs by 777 persons, or one and three-tenths per cent. Employers in 12 industrial groups reported that they had reduced their staffs by 1,137 employees, while in 11 groups there were reductions amounting to three hundred persons. An increase for the week of July 17 had been anticipated but, as shown above, was not realized.

For the following week firms in 9 industrial groups anticipated that they would enlarge their staffs by 309 persons. In 3 groups no changes were expected, while employers in the remaining 6 groups estimated that they would have reductions amounting to 110 employees. The net increases, therefore, anticipated by these firms was 199 persons, or three-tenths of one per cent.

As compared with their reports for the middle of January, firms in 18 industrial groups reported that they had enlarged their staffs by 5,711 persons, while in 5 groups there were declines amounting to 1,809 employees. The net increase since the middle of January in the payrolls of these 496 firms, therefore, was 3,901 persons, or over seven per cent.

The largest increases as compared with their returns for the preceding week were recorded by firms in logging, lumber and its products and railway transportation. All these groups anticipated having further increases during the following week, that expected in lumber and its products being the largest. The changes in the remaining plus groups were all slight.

The most important reductions in staff as compared with their reports for July 10 were recorded by firms in railway construction, iron and steel products and coal mining. Most of the reduction in iron and steel products occurred in shipbuilding establishments on account of the completion of vessels, while in coal mining the reduction in staffs was largely occasioned by lack of space for storing the output of one important mine. For the following week railway construction anticipated having some recovery, but further though smaller declines were expected in iron and steel products and coal mining. In the other minus groups the changes, both actual and proposed, were small.

The largest increase as compared with their returns for January 17 were reported in railway construction where 1,703 more persons were employed. In edible plant products, building construction, clay, glass and stone products, edible animal products, pulp and paper, miscellaneous manufacturing industries, hotels and restaurants, telephone operations, wholesale trade and railway transportation, there were also substantial increases in employment. In the other groups showing plus tendencies in this comparison the increases were slight.

The most noteworthy reductions in staffs as compared with their returns for the middle of January were reported by firms in the iron and steel group, where 1,285 fewer persons were employed, largely on account of inactivity in shipyards. In logging, lumber and its products and coal mining there were substantial decreases, while in retail trade the reduction was slight.

OPENING PRICES FOR COAST SALMON

Opening prices have been set by the B.C. Packers' Association for this year's salmon pack, and while they show an advance over those of previous years, the increase is not in proportion to the additional cost of production.

The prices are as follows: Sockeye, half-pound tins, \$20.50; talls, \$19; red Spring, halves, \$17.50; talls, \$15; Cohoes, halves, \$13.50; talls, \$12; pink, halves, \$7.50; talls, \$6.50; Chums, halves, \$6.25; talls, \$5.25.

In the case some of the canneries where they are long or short on a special line of fish the price varies all the way from twenty-five cents to a dollar per case. This applies particularly to red Springs, Pinks and Chums.

Factory Site adjoining the Great Northern and Canadian Northern Railways. 530x200 is the size of property. Price, \$12,000.00. Also 2 small factory sites adjoining, railway trackage obtainable. Price, \$5,000.00 each.

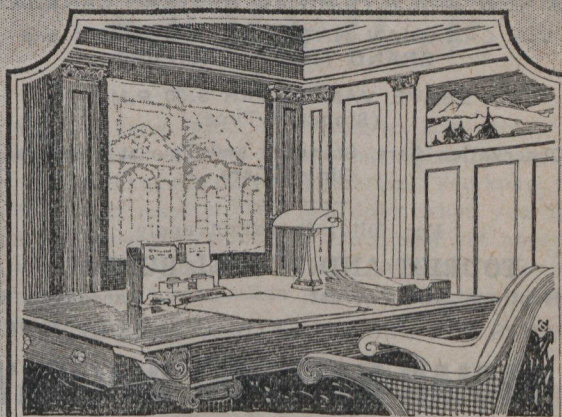
Scott Realty Co.

Phone Sey. 4272 410 Rogers Bldg., 470 Granville
VANCOUVER, B.C.

**THE FOUNDATION COMPANY
OF B. C. LIMITED****CONSTRUCTION ENGINEERS**

Railroads	Industrial Plants
Bridges	Industrial Housing
Hydro Electric Plants	Buildings

STANDARD BANK BLDG. VANCOUVER, B.C.

**SUPERFINE
LINEN RECORD**

Your letterhead may pass through the mails, be handled by a dozen clerks, be filed, and yet, at the crucial moment, carry into a president's office the suggestion of your Company's dignity and standing—if it be of Superfine Linen Record.

THE ROLLAND PAPER COMPANY, LTD., Montreal
High Grade Paper Makers Since 1882
Mills at St. Jerome, P.Q., and
Mont Royal, P.Q.