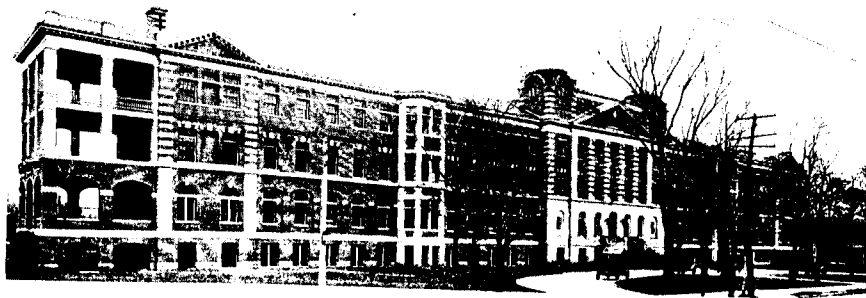


## Port Credit Brick



### The Western Hospital

Construction made use of Port Credit Brick. This brick is full size, stands high compression tests, and has a notably low absorption. This makes Port Credit Brick highly desirable for facades and elaborate structures, subject to the grime of city conditions. The Port Credit Pressed Brick is graded No. 1, No. 2, and No. 3.

This Brick is made from Canada's best bed of shale. The output is 1,000,000 a week. Prompt deliveries may always be had at building centres.

For Specifications or Deliveries, telephone, call or write

## Port Credit Brick Company, Limited

PORT CREDIT

Toronto Office: McKinnon Building

(12)

**"Made of Canada's Finest Shale."**



### The Constructor Says —

**"WHEN** I order a yard of metal lath I want it to cover a yard on the wall.

That's why I always order HERRINGBONE LATH. A yard on the wagon is a yard on the wall. Those selvage edges eliminate the lap and the extra length is not counted in the measurement."

**"HERRINGBONE USERS ARE HAPPY LATHERS"**

**CLARENCE W. NOBLE**

GENERAL SALES AGENT

TORONTO

MONTREAL

WINNIPEG

Metal Shingle & Siding Co., Manufacturers