

CHESS.

Solution to Problem No. 21, R to KR7. Solved by C. W. L.

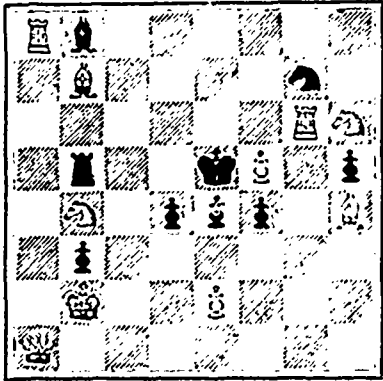
No 22, Q to Kk8. Solved by C. W. L. and J. W. Wallace.

PROBLEM No. 24.

Third prize in *Pen and Pencil*.
By J. Rayner, Leeds.

From *Montreal Gazette*.

BLACK 9 pieces.



WHITE 10 pieces.

White mates in two moves.

GAME No. 25.

We are indebted to the *N. O. Times Democrat*, for the score and notes of the following:

A bright little odds game, with a very pretty finale, played March 27, 1890, at the Havana Chess Club, Capt. Mackenzie yielding the Queen's Knight to his opponent:

KING'S KNIGHT'S GAMBIT.

(Remove White's Queen's Knight.)

WHITE	BLACK
Capt. Mackenzie.	Senor M.
1 P to K4	P to K4
2 P to K B4	P takes P
3 K Kt to B3	P to K Kt4
4 B to B4	B to Kt2
5 P to Q4	P to Q3
6 P to B3	P to K R3 a
7 B to Q2 b	Q Kt to B3
8 P to Q Kt4	P to Q R3 c
9 Q to Kt3	Q to K2
10 Castles (Q R)	B to Kt5
11 Q R to K	B takes Kt
12 P takes B	Q R to Q d
13 K R to Kt	Kt to B3
14 Q B takes P!	Q to Q2
15 B to Q2	Castles
16 P to K R4!	P to Q Kt4
17 P takes Kt P	P takes B
18 P takes Kt!	P takes Q e
19 R takes B ch	K to R
20 R to K R!	And Black resigned.

NOTES.

a Black defends in thoroughly orthodox style where a close game is intended, but at this point, both in even and odds-game, 6* P to Kt5 is, we believe, preferable, a leading variation running: 7 Q B takes P, P takes Kt; 8 Castles, B to K3!; 9 B takes B, P takes B; 10 Q to Kt3, Kt to Q2; 11 Q takes K P ch, Q to K2 with the advantage.

b The best continuation, presaging Q to Kt3 and Castles (Q R) at an early moment. "When I was a beginner, back in 1860," remarked Capt. Mackenzie, "and Kolisch was giving the Kt, that B to Q2 used to bother me awfully!"

c An unnecessary precaution against White's supposed intention, 9 P to Kt5, to which Black, in fact, could reply, with advantage, * Kt to R4! Correct was 8* K Kt to K2; and then, if 9 Q to Kt3, Castles!

d Far better to have boldly castle (Q's side) at once. As it is, he sup-

plements this weak move with a worse one for his next.

e The Royal bait is too tempting to be resisted, and the Captain is enabled to treat us to another of his sparkling finishes.

GAME No. 26

One of 19 simultaneous games played on the 14th ult., at the City Chess Club, Dublin, by Mr. F. J. Lee.

SICILIAN DEFENCE.

WHITE.	BLACK.
Mr. F. J. Lee.	Mr. J. D.
1 P to K4	P to QB4
2 Q to K B3	P to Q3
3 Kt to B3	QKt to B3
4 B to B4	B to K5
5 Castles	Kt to K1
6 Kt takes Kt	B takes Q?
7 B takes P mate!	

We leave our readers to picture to themselves the wonderful transformation of Mr. J. D's features by the startling retention for the capture of the single player's. The game is worthy of a place in Mr. I. O. Howard Taylor's collection of sacrificing parties in his famous work "Chess Skirmishes."—*Gazette*.

CONFEDERATION LIFE ASSOCIATION.

HEAD OFFICE, - TORONTO.

J. K. MACDONALD, Managing Director.

January 1, 1890.

Assets,	-	\$2,894,502.41
Liabilities,	-	2,664,253.75
Surplus,	-	\$230,248.66

1889.

New Assurance,	\$2,369,500
Total	17,711,404
Premium Income,	561,293
Total	721,973

RESULTS OF BUSINESS OF 1889.

Increase in Assurance,	-	\$948,467
" Assets	- - -	341,140
" Premiums,	-	51,190
" Surplus	- - -	51,664
Surplus Earned	-	\$115,689

RATES LOW.

PROFITS UNEQUALLED.

F. W. GREEN,

Manager for Maritime Provinces,
166 HOLLIS ST., HALIFAX.

FOR SALE.

Rose Hill Cottage, Middle Sackville
HALIFAX COUNTY.

A Seven-Room House,

With Pantry, Sink-Room, &c. Good well near at hand. Two and a Half Acres of LAND, partly under cultivation, with Shade and Fruit Trees. One Mile from Beaver Bank Station. Address

CHARLES DONAHOE,
Near Sackville.

DRAUGHTS-CHECKERS

SOLUTIONS.

Problem 167.—The position was: black 1, 6, 9, 10, 11, 15; white 13, 17, 18, 20, 21, 22, 28; black to play and win. Besides the solution sent in by Mr. Gates of this city, we have received the following from Mr. Joseph E. Cox of the Windsor Hotel, Montreal, which we regard as the best that can possibly be given. For this solution we award and will send him the prize offered:—

15-19	23-26	20-24	26-17
20-16	11-8	28-19	21-11
11-20	26-30	10-14	1-17
18-15	8-3	17-10	black
19-23	30-26	6-24	wins
15-11	3-8	13-6	

PROBLEM 168.—The position was as follows:—Black men 8, 16, 18, 20, 22; white men 15, 29, 31, king 10; black to play and win:—

8-12	28-32	19-23	31-27
10-14	6-1a	14-17	25-22
20-24	32-28	23-26	27-23
14-23	1-6	17-21	22-17
16-19	19-24	26-30	23-18
23-16	6-10	21-17	17-13
12-19	24-27	22-26	18-14
15-10	31-24	17-21	black
24-28	28-19	26-31	wins.
10-6	10-14	29-25	

a If 14-19, black wins by first post.

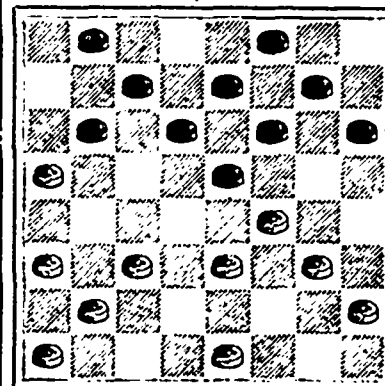
GAME LVIII.

An off-hand skirmish between Samuel Granville and Frank Hamilton. The game is unnamed. What will experts call it?

11-15	6-9	9-18	4-8
23-19	17-13	27-23	this forms
8-11	2-6	18-27	
26-23	30-26	32-23	
9-14	14-18	5-9	
22-17	23-14	26-22	

PROBLEM No. 170.

Black men 1, 3, 6, 7, 8, 9, 10, 11, 12, 15



White men 13, 19, 21, 22, 23, 24, 25, 28, 29, 31.
White to play. What result?
This end game merits special attention, and we will give a copy of the *American Checker Review* for the best solution.

JUST PUBLISHED, THE POCKET GAZETTEER

—AND—
ATLAS OF CANADA,
By J. G. Bartholomew, F. R. S. L., F. R. G. S.
—AND—
Edited by J. M. Harper, M.A., Ph.D., Quebec.
Contains 300 Pages & 36 Maps.
PRICE ONE DOLLAR.
A. & W. MACKINLAY,
PUBLISHERS.

Bermuda Bottled.
"You must go to Bermuda. If you do not, I will not be responsible for the consequences." But, doctor, I can afford neither the time nor the money. "Well, if that is impossible, try"
SCOTT'S EMULSION
OF PURE NORWEGIAN COD LIVER OIL.
Sometimes call it Bermuda Bottled, and many cases of
CONSUMPTION, Bronchitis, Cough
or **Severe Cold**
I have CURED with it; and the advantage is that the most sensitive stomach can take it. Another thing which concerns it is the stimulating properties of the Hypophosphites which it contains. You will find it for sale at your Druggists, in Salmon or Capper. We are sure you get the genuine.
SCOTT & BOWNE, Belleville.

Best Route to Boston.
CANADA ATLANTIC LINE.
ONLY ONE NIGHT AT SEA.
Quickest & Most Direct Route. Low Fares.
The Magnificent Clyde Built Steel S.S.
"HALIFAX"
Is the Largest, Safest, and Best Furnished and Most Comfortable Passenger Steamship ever placed on the route between Canada and the United States
Sails from Noble's Wharf, Halifax, every Wednesday Morning at 8 O'clock, and Lewis' Wharf, Boston, every Saturday at 12 O'clock.
Passengers by Tuesday evening trains can go on board on arrival without extra charge.
THROUGH TICKETS to New York and all points West.
Baggage checked through from all stations.
Through Tickets For Sale by All Agents Intercolonial Railway.
CHIPMAN BROTHERS,
General Agents, Halifax.

Chipman Brothers,
HALIFAX.
WHOLESALE HARDWARE,
NAILS, IRON, STEEL,
PAINT OILS, GLASS, &c.
AT LOWEST PRICES.
James Roue,
MANUFACTURER OF
GINGER ALE,
LEMONADE,
SODA WATER, &c.
For full particulars address P. O. Box 406 or
WOODS' WHARF, HALIFAX, N. S.
The finest and largest range of
TAILORS' CLOTHS
to be seen in the city is at
STANFORD'S
THE TAILOR,
156 HOLLIS STREET.