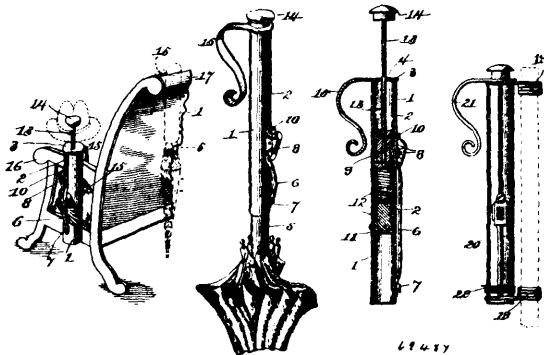


having projecting toes, said legs being inserted in said sockets the toes under the overhanging walls of the sockets, a plug in the recess at the end of the bonding device holding the bonding device in place, the toes of the legs under the overhanging walls, and metal fillings introduced into molten state into the sockets about the legs securing the parts in position. 3rd. A bonding device for bonding together railway rails, consisting of an integral metal bar and legs thereon, one at each extremity of the bar projecting in the same direction, the legs having laterally projecting toes on corresponding sides of the legs. 4th. An integral bonding device for bonding together railway rails, comprising an elongated bar, legs at the ends of the bar projecting therefrom on the same side of the bar, the legs each having a bevelled side wall, an enlarged free end projecting laterally in the same direction, and a recess in the wall opposite the bevelled wall. 5th. A railway rail provided with recesses one at each end in the tread of the rail extending in the direction of the length of the rail from its ends inwardly a distance, and provided with sockets entering deeper into the rail one at or near the end of each of said recesses and continuous therewith, said sockets each having an undercut wall, the undercut walls of the sockets projecting in the same direction whereby two abutting rails may be securely bonded to each other by a conforming bonding piece.

No. 62,487. Carrier or Holder. (Porte-paquet.)



John Quigley, Richard Simpson and Matthew A. Blair, all of Blossburg, Pennsylvania, 1st February, 1899; 6 years. (Filed 3rd December, 1898.)

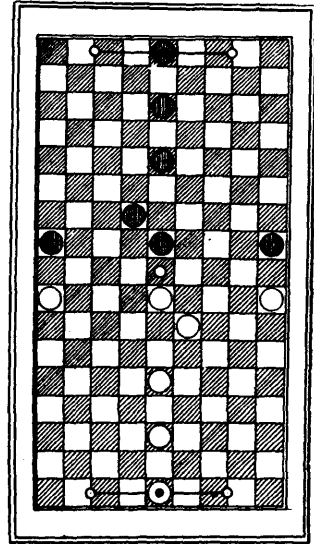
Claim.—1st. A carrier of the character described, comprising a slotted tube having a handle, a plunger in the tube, a holder upon the outside of the tube, and connected to the plunger through the said slot, a spring in the tube having one end connected to the latter and the other end attached to the plunger and projecting upon the outside of the tube. 2nd. A carrier of the character described, comprising a slotted tube having a spring handle, a stem projecting through the top of the tube, an elastic holder having one end secured upon the outside of the tube and the other end connected to the said stem upon the inside of the tube. 3rd. A carrier of the character described, comprising a slotted tube, a stem projecting from the tube, an elastic holder having one end secured to the tube and the other end connected to the stem upon the inside of the tube, and a spring in the tube connected to the latter and to the said stem. 4th. The combination, with the slotted tube, and a spring handle secured thereto, of an elastic holder upon the outside of the tube, a spring controlled plunger in the tube to which the said holder is connected, and a stem secured to the plunger and projecting from the tube for operating the holder, as set forth. 5th. A carrier comprising a slotted tube having a spring handle, a spring on the inside of the tube, a stem connected to the spring and the latter to the tube, an article holder having one end connected to the stem and the other end to the tube, and the springs upon the outside of the tube, as set forth.

No. 62,488. Game Apparatus. (Appareil de jeu.)

George McKenzie Patterson and James Philip Fennell, both of Berlin, Ontario, Canada, 1st January, 1899; 6 years. (Filed 19th October, 1898.)

Claim.—1st. A game board divided into equal squares alternately of contrasting colours or shades, the board being so proportioned that an odd number of squares lies along each side, a row of squares on each diameter of the board, and having a goal line drawn across the middle square at opposite ends of the board, and one or more squares on each side thereof, substantially as and for the purpose specified. 2nd. A game board divided into 153 equal squares alternately of contrasting colours or shades, the board being 17 squares long by 9 broad, and having a goal line drawn across the middle square at opposite ends of the board, and one or more squares on each side thereof, substantially as and for the purpose specified. 3rd. A game apparatus comprising a board divided into an odd number of equal squares alternately of contrasting colours or shades, so that a row of squares lies on each diameter of the board, in combination with a puck placed on the central square of the board and two sets of men of contrasted colours, each set placed on one-half of

the board as follows:—a marked man on the middle square at the end, a man three squares from the end on the middle row, a man

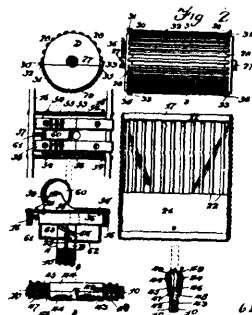
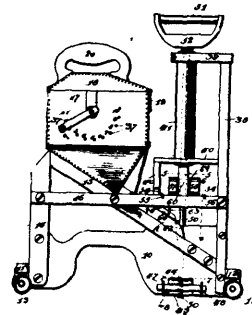


62488

five squares from the end on the middle row, a man eight squares from the end on the middle row, a man four squares to the right and one four squares to the left of the last named man, and a man on one of the first squares diagonally behind the said man, substantially as and for the purpose specified. 4th. A game apparatus comprising a board divided into an odd number of equal squares alternately of contrasting colours or shades, so that a row of squares lies on each diameter of the board, and having a goal line drawn across the middle square at opposite ends of the board, and one or more squares on each side thereof, in combination with a puck placed on the central square of the board and two sets of men of contrasted colours each set placed on one half of the board as follows:—a marked man on the middle square at the end, a man three squares from the end on the middle row, a man five squares from the end on the middle row, a man eight squares from the end on the middle row, a man four squares to the right and one four squares to the left of the last named man, and a man on one of the first squares diagonally behind the said man, substantially as and for the purpose specified.

No. 62,489. Shingle-Nailing Machine.

(Machine à clouer le bardeau.)



62489

Christ J. Lonning, Paulina, Iowa, U.S.A., 1st February, 1899; 6 years. (Filed 17th October, 1898.)