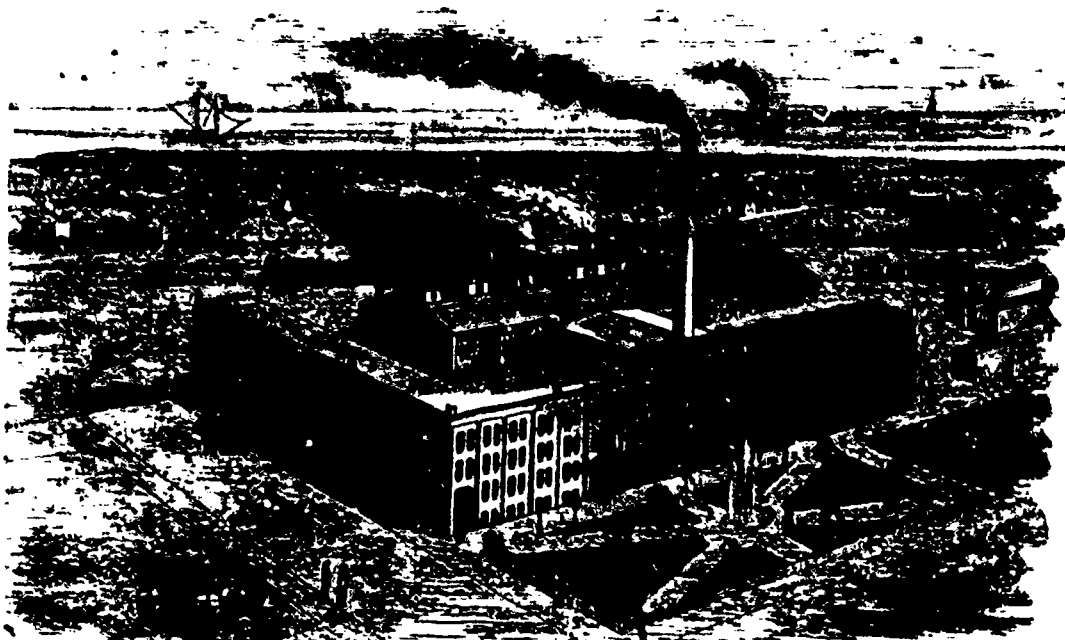


THE MASSEY MANUFACTURING CO.,

Toronto, Ontario.

The Largest Factory in Canada manufacturing Reapers, Mowers and Horse Rakes. Our Offices are connected with all parts of the Country by Telegraph, and with the business places in the City by Telephone.



WORKS OF THE MASSEY MANUFACTURING COMPANY, TORONTO, ONT.

OUR REMOVAL TO TORONTO.

The New Factory in Full Blast. Glad Tidings for Farmers.

We desire to call the attention of our patrons to the fact that we have erected extensive works in Toronto, and removed our entire business from Newcastle to this city. During the past few years our manufactures have been so immensely popular it has been found impossible, even by running our works night and day, to keep pace with the demand. The building of a new factory, on a far larger and more extensive scale, became necessary. As Newcastle did not possess such shipping and other facilities as the trade demanded, our attention was directed to Toronto, a point from which our customers may be reached promptly. We purchased six acres of the old exhibition grounds, in the western part of the city, situated immediately between King street and four of the leading railroads entering the city. The erection of the buildings was commenced in May last. Side tracks are laid to admit of the cars of the various roads being shunted in alongside any of the buildings, loaded with iron, coal, lumber, or other raw materials, and ready to be reloaded with finished Machines and Horse Rakes, thereby saving an immense amount of re-handling and cartage. In the construction of the buildings one million brick, half a million feet of lumber, six hundred loads of stone, and nine thousand pieces of iron glass were used. The main building is 350 feet long, 50 feet wide, and four stories in height, including basement. The Foundry and Blacksmith Shops are 200 feet long and 60 feet wide. Engine and Boiler House 35x50. The power is supplied by two 60 horse-power boilers, and a 100 horse-power Brown Colville Engine made at Fitchburg, Mass. (the Engine a beautiful piece of workmanship, said to be the finest in Canada). All the buildings are heated by steam. Three powerful Steam Elevators convey the various materials or finished work from one flat to another in the different departments. No expense whatever has been spared in furnishing the whole factory with new tools and machinery of the latest and best description, from the very best makers in the United States and Canada. Everything has been done to secure the most perfect workmanship, and our customers may hereafter rely more than ever on the high character of the work turned out by us, while at the same time we shall be in a far better position to supply the demand for our goods.

Sharp's Self-Dumping Rake.

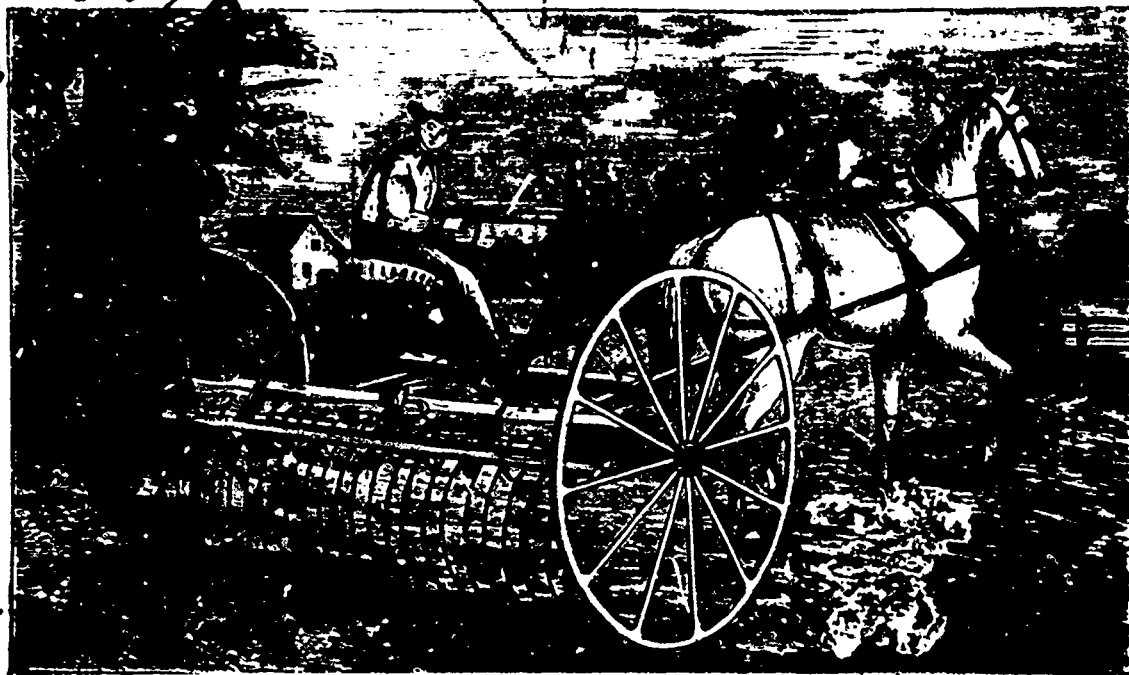
7,300 Sharp's Rakes now in use, all sold on the terms

"NO EQUAL OR NO SALE."

If you would know the secret of the immense and permanent success of Sharp's Self-Dumping Rake, examine it carefully and you will see that it is owing to its many points of superiority over all other Rakes, its strength, durability, ease of operation, excellence of workmanship and materials. Its self-dumping apparatus and its teeth-clearing apparatus are still unrivalled. The written testimony of Seven Thousand Five Hundred Farmers of Canada, to whom we have sold these Rakes, will bear us out in our assertions. Last season we were able to manufacture only 2,500, and we regretted very much to find at the close of the season that we had 700 unfilled orders. For the coming harvest we are building 3,200, and if the demand continues to increase, we shall manufacture for 1881 Four or Five Thousand, as may be required to fill orders. More than twice as many Sharp's Rakes are now sold as of any other kind in Canada. Purchase the genuine Sharp's Self-Dumping Rake, made exclusively by us and you will be well satisfied.

The Independent Self-Dumping Attachment on Sharp's Rake.

It is very simple, and is the strongest, best and most durable Self-Dumping attachment in use, being made almost entirely of wrought iron. This new feature avoids the objectionable brakes, ratchets and gears in use upon the competing self-dumping rakes, being simply a friction grip applied to and around the inner end of each hub. It is operated by the foot of the driver applied to a lever in a convenient position, and it requires very little friction upon the hubs to lock the wheels and axle, causing them to roll together and raise the teeth. The grip releases itself immediately upon removing the foot. By the application of a very slight friction upon the hubs, easily controlled by the driver, the teeth are raised to any height above the ground, carried any distance, and dropped any moment.



SHARP'S SELF-DUMPING RAKE.

The Teeth-Clearing Arrangement

Is the only really good and reliable one in use, and we call particular attention to the very great superiority in its operation over the wooden stick and iron rod cleaners in common use on the other wheel rakes, and which project from the rear of the axle in most cases. These common wooden stick cleaners frequently break, and iron rods bend out of shape, and are very unsatisfactory in their operation on account of the constant liability of clover and other soft hay lodging upon and hanging to said cleaner rods in considerable quantity, requiring to be pulled off by hand.

Our Daily Production is 15 Reapers and Mowers, and 40 Horse Rakes. Our Total Production this season will reach nearly Five Thousand (5,000) Mowers, Reapers and Horse Rakes.

SEND FOR CATALOGUE, TESTIMONIALS AND PRICES.

YAY