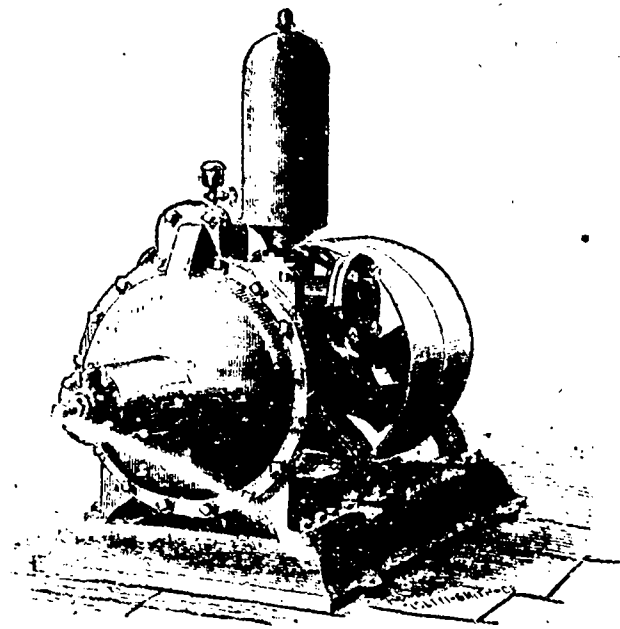


# Central Iron Works

SIMCOE STREET,

PETERBOROUGH, Ontario.

WM. H. LAW, PROPR.



## PROTECTION FROM FIRE

An Improved Rotary Piston Force Pump.

No.	Diameter of Pipes.		No. of Revolutions.	Capacity per minute at table speed.	Price.
	Suction.	Discharge.			
2	2½ in.	2 inch.	250	125	\$100
3	4 "	3 "	250	250	150
4	5 "	4 "	250	400	225

SEND FOR CIRCULAR.

MANUFACTURER OF

Engines, Boilers, Pumps, Saw Mill Machinery

STEAMBOAT PROPELLERS AND ENGINES.

# C A S T I N G S

For Architectural Works. &c.

# IRON ROOFING AND BRIDGES,

AND ENGINEERING WORK IN GENERAL.

## ROBIN & SADLER

Have been awarded Three Years in succession at the Provincial and Dominion Exhibitions in Montreal, First Prizes

for

LEATHER BELTING

**LEATHER BELTING**

Fire-Engine Hose, &c.

Send for Price Lists and Discounts to the Factory

594, 596, 598, St. Joseph Street,

**MONTREAL.**

## COLQUHOUN, DRUMMOND & CO.,

IMPORTERS AND DEALER IN

Machinery, Mill, Steamboat and Foundry Supplies,  
OILS, ETC., ETC.,

OFFICE:—16 Custom House Square, MONTREAL.

N.B.—Second-Hand Machinery, Boilers, &c., Negotiated for.

## The Ontario Canoe Co., Limited

PETERBOROUGH, ONTARIO,

Manufacturers of all kinds of PLEASURE, FISHING and HUNTING

# C A N O E S

Patent Cedar Rib Canoes, Patent Longitudinal Rib Canoes, Basswood Canoes, Folding Canoes, Paddles, Oars, Tents, and all Canoe Fittings.



PATENT LONGITUDINAL RIB CANOE.



THE ONTARIO CANOE.



THE JUNIPER CANOE.

Gold Medal, London Fisheries Exhibition, 1883.

J. Z. ROGERS,

President and Managing Director

Send 3 cent Stamp for Illustrated Catalogue.

Canoes for Lumbermen, designed to carry any amount of goods and chattels and strongly built, made to order on short notice.