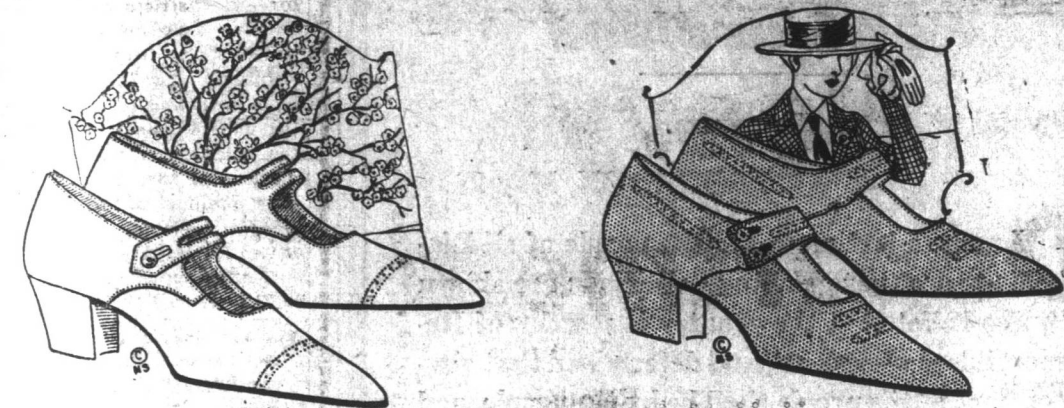


Wonderful Showing Ladies' Suede Footwear



Ladies' Grey and Brown Suede Lace
Oxford Barratts (English)—
\$10.50 pair

Ladies' Grey Suede Lace Oxfords—
Only \$3.80 pair

Ladies' Brown and Black Suede Lace
Oxfords. Only \$3.50 pair

Ladies' Otter Ooze Mildred 3-Strap . . . \$11.00 pair
Ladies' Dove Grey Ooze Luxor cross-Strap—
\$10.50 pair

Ladies' Log Cabin Ooze Joan 1-Strap . . . \$10.50 pair
Ladies' Oyster Grey Ooze Joan 1-Strap . . . \$10.50 pair
Ladies' Log Cabin Suede Sally Strap . . . \$8.00 pair
Ladies' Log Cabin Suede 1-Strap, 2 Button . . . \$8.00 pair
Ladies' Grey Suede 2-Strap, Buckle . . . \$3.80 pair
Ladies' Brown Suede 2-Strap, Buckle . . . \$4.00 pair
Ladies' Pat. wide Strap, 3 Button, Grey trimmed, Low
Heel . . . \$5.75 pair

F. SMALLWOOD

THE HOME OF GOOD SHOES 218 and 220 Water Street.

Job's Stores, Limited. HEADQUARTERS FOR MARINE ENGINE SUPPLIES—ALL NEW STOCK

K. W. Coils single and double cylinder,
New York Coils, Jump Spark and Make-
and-Break, Scheblar Carburettors and
parts, Spark Plugs, Priming Cups, Gaso,
Cocks, Drain Cocks, Switches, High and
Low Tension Wire, Batteries, Grease,
Stuffing Boxes, bronze shafting, etc.
Also Lubricating Oils on draught and tins

Job's Stores, Ltd.

Table Meal

Finest American
"Sunrise"
Brand in 220-lb. barrels

Black P. E. I. Oats
Choicest quality, in full 4-bushel bags.

Harvey & Co., Ltd.

DON'T SAY PAPER
SAY "EVENING TELEGRAM"

Dress and What it Can Do for a Woman

"It is a simple matter to suit one's type," said a brilliant and popular English actress, Miss Seyler, "if one is blessed with a distinct type, but so few women are." She labeled the sentence with a flourish of her hands, and smiled rather mischievously. "Now what type am I?" she demanded.

I looked at her intently. She was all piquante charm, full of vivacity and magnetism; beautiful in a subtle, inexplicable way, neither dark nor fair, neither big nor small, yet utterly charming and delightfully gowned. "You see," she continued, "it's difficult to say, isn't it? That is because there is nothing extreme about my appearance. The woman who needs to be careful in her choice of clothes is she who, like myself, answers to the description, so dear to fortune tellers, of 'between colors'."

Miss Seyler went on to tell me that the world is not peopled with types, but rather with nondescripts; that is why the average woman, not being endowed with Graeco-Roman features or statuesque proportions, looks in her mirror and sighs over the problem of dressing to advantage. When I asked her what advice she could offer on the subject, she said:

"My personal opinion is that the woman who lacks definite coloring should make up for it, not by adding color to her cheeks and lips and coloring her hair, but rather by choosing clever color schemes in her dress. She should not wear vivid colors, but aim for striking contrasts in the more subdued tones; also, what she lacks in height and shapeliness she can make up for in the line of her frocks. My advice to the average woman of no particular coloring, whose eyes are perhaps watery-brown, and whose hair is just mouse-brown, is this: 'Don't under-estimate yourself.'"

"The world always accepts us at our own valuation. Also, there is consolation to be derived from the knowledge that wispy-washy eyes will be misty-grey to someone, and I have known mouse-brown hair to be likened into 'desert sand' with the moon shining on it by a dear mere man!"

Lobsters Reported Scarce in Cape Breton COD FISHING IS GOOD.

LOUISBURG, May 28.—The lobster season on this section of the coast opened on the 17th of May, but owing to the ice being still reported on the eastern coast very few lobsters have been taken. In this neighborhood this has been a busy week for the fishermen, getting out the lobster gear, and they report lobsters not very plentiful but claim they are off in deep water and will not take the shoaler places until the water gets a little warmer. Easterly of this place very few fishermen have risked placing much lobster gear in the water, as the ice is reported still in sight off Scatarie, and in spite of the westerly winds of the past week there has been a strong tide running to the westward which has controlled the ice movement. Until this body of ice leaves the shore, fishermen on the eastern shore will scarcely risk placing all the lobster trawls in the water. This will shorten up the lobster season for them and reduce their earnings, as the season closes on the 15th of July.

Codfishing from this port has been very good during the past two weeks, with plenty of bait running, and fishermen have been landing good fares. The first salmon were reported on the 20th when six were netted. These fish should be running well in the course of another week, and the schools usually keep running strong for from twenty to thirty days.

Irish Saint Gets Credit

According to legend, says a Dublin despatch, it was not Columbus who first discovered America, but the Irish saint, Brendan the Navigator. The exploit of the saint is commemorated in a beautiful stained glass window, which will be exhibited at the British Empire Exhibition at Wembley. It is the work of two Irish women artists and will be the only example of stained glass work by women to be exhibited.

The saint holds in his right hand an oar and in his left a chalice. Around his head is a nimbus, while about his feet flow green waves.

Wanted a Second Hand Fish
Screw for crank fish. THE
COWAN BROKERAGE CO.
LTD.—4/14/24

Search the City with a Microscope and You Will Find No Better Values



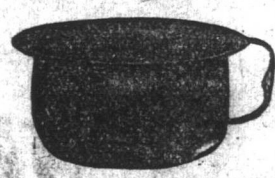
ENAMELED KETTLES.
98c. \$1.25, \$1.39 each.



ALUMINUM PEPPER
& SALT SHAKERS.
Our Price, 8c. & 10c. each.



JAPANNED DUST PANS.
Round handle through back, riv-
eted; ring on end to hang by.
19c. 25c. 35c. each.



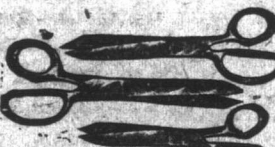
ENAMELED CHAMBERS.
39c. 49c. 59c. each.



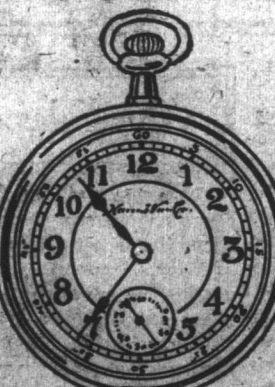
WHITE & GREY
CHAMBER PAIS.
\$1.95, 2.25, \$2.50 each.



SHOE BRUSHES.
Only 25c. each.



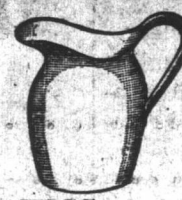
SHEARS & SCISSORS.
Big assortment.
25c. 29c. 39c. 65c.



WATCHES.
The demand for reliable and
popularly priced Watches is con-
stantly increasing.
Our Price, \$1.98.



ENAMELED RICE BOILERS.
Double coated Enamelware.
Our Price, 98c. each.



ENAMEL JUGS.
49c. 59c. 65c. 75c. each.



Whisk 39c.
Brooms each



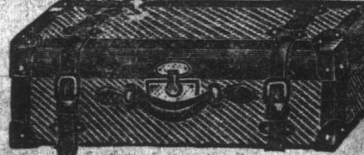
Plain
Steel
FRY PANS
19c., 29c.,
39c., 49c.
each



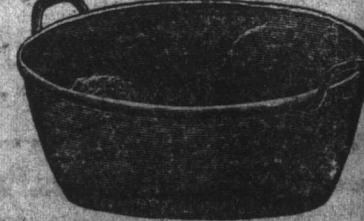
Knives
& Forks
with highly
polished
blades
Our Price
29c. K. & F.



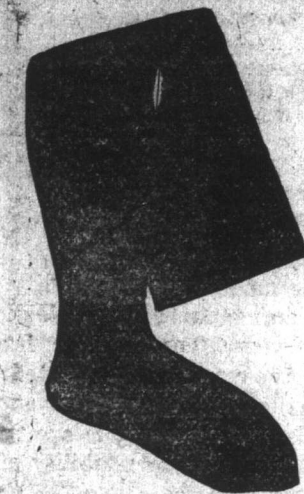
BOILERS.
All Sizes.
98c. \$1.39, \$1.69, \$1.98 each.



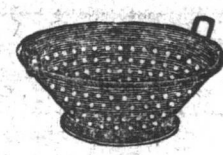
SUIT CASES.
Without Belts—\$1.95.
With Belts—\$2.95, \$3.95, \$5.95,
\$6.75 each.



ENAMELED DISH PANS.
49c. 59c. 79c. each.



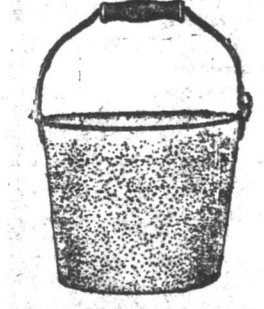
BIG BARGAIN
FOR FRIDAY & SATURDAY:
25' Dozen Ladies'
HEATHER HOSE.
worth 45c. pair.
Friday & Saturday,
Only 19c. pair.



ENAMEL COLANDERS.
Good and strong.
Only 35c. each.



25c. Bottle.



GALVANIZED WATER PAIS.
29c. 39c. each.



ENAMEL SAUCEPANS.
39c. 49c. 79c. 98c. each.



Boys
Wash
Suits

Season's newest models and pat-
terns. Sizes 3 to 8 years.
\$1.35 to \$1.95 Suit.

Kindly Remember

W. R. Goobie

is just opp.
Post Office