

AT THE
NICKEL
TO-DAY

Store of
ter Service.

HEAVY
CK HOSE.
ular line of All-
bbed Hose; a
eking for win-

9c. pair.

STRIPED
NELETTE.

strongly made
te of this kind
ndred and one
e home; splen-
at a low price.

9c. yard.

d Percalés.
an looking pat-
terns,
c. pound.

ttention
Street

ys Something
w and Fresh
at

IS & Co's
LIMITED,

WATER STREET.

Canadian Chick
Canadian Turkey
P. E. I. Fat Gees
Fresh Rabbits.

w Grape Fruit.
Fresh Peas.
Green Grapes.
Fornia Oranges.
Tangerines.
Red Grapes.
Fresh Celery.
Ripe Tomatoes.

ESH EGGS.

down Cake Flour.
Rye Flour.
necke Flour.
skwheat Flour.
raham Flour.
Paisley Flour.
Potato Flour.
Semolina.

H BLUE POIN
OYSTERS.

upply Eng. Bisc
Shortbread.
Pat-a-Cake.
stee Crackles.
Butter Cream.
on Puff Cream.
Cafe-au-lait.
Macaroons.
Ratafias.
Bath Oliver
Oatena.

Our Own
and Coffe

ething Spec

Civic Commission.

WEEKLY MEETING.

A regular weekly meeting of the Commission was held yesterday afternoon at 2 o'clock in the City Hall. Mayor Cook presided, and Messrs. Marlin, Outerbridge, Collier, Ryan and Dowden were present.

Minutes of the last meeting were read and confirmed.

A meeting was a very short one, being very little business to the attention of the Board.

Mr. F. J. Doyle, requested payment of certain amounts deducted from the account presented in connection with the Municipal Election, and that failing a satisfactory statement he would be compelled to sue for the same.

Legal proceedings were mentioned in reference to the matter. The Mayor wrote in reference to the matter re land taken in the City of St. John's.

Presented by Messrs. Golden and Ryan, for services in connection with the revision, amounting to each, was ordered paid.

Mr. Engineer called attention to the necessity of having the City Engineer's office moved to the new building, and to the necessity of immediate action on the matter. The Mayor is to be written with reference to the same.

Attention of the Board was called to the necessity of placing a new light in the house of Waterman and it was considered that it would be of great service and value to the public generally. The City Engineer was instructed to communicate with the City Engineer's office, with a view to having this light installed.

Mr. Engineer submitted his report, which was rather lengthy, and dealt principally with the water supply, conservation of resources, and the work done during the past year.

A matter of City Lighting came under discussion. The City Engineer will interview Superintendent in relation to same.

Mr. Brohm reported two cases of Diphtheria in the city for the week ending February 7th.

City Engineer, Sanitary Officer and other departments were present.

City Engineer, Sanitary Officer and other departments were present.

City Engineer, Sanitary Officer and other departments were present.

City Engineer, Sanitary Officer and other departments were present.

City Engineer, Sanitary Officer and other departments were present.

City Engineer, Sanitary Officer and other departments were present.

City Engineer, Sanitary Officer and other departments were present.

City Engineer, Sanitary Officer and other departments were present.

City Engineer, Sanitary Officer and other departments were present.

City Engineer, Sanitary Officer and other departments were present.

City Engineer, Sanitary Officer and other departments were present.

City Engineer, Sanitary Officer and other departments were present.

City Engineer, Sanitary Officer and other departments were present.

City Engineer, Sanitary Officer and other departments were present.

City Engineer, Sanitary Officer and other departments were present.

City Engineer, Sanitary Officer and other departments were present.

City Engineer, Sanitary Officer and other departments were present.

City Engineer, Sanitary Officer and other departments were present.

City Engineer, Sanitary Officer and other departments were present.

City Engineer, Sanitary Officer and other departments were present.

City Engineer, Sanitary Officer and other departments were present.

City Engineer, Sanitary Officer and other departments were present.

City Engineer, Sanitary Officer and other departments were present.

City Engineer, Sanitary Officer and other departments were present.

City Engineer, Sanitary Officer and other departments were present.

City Engineer, Sanitary Officer and other departments were present.

City Engineer, Sanitary Officer and other departments were present.

WISE BUYS for the SAVING WISE

and for those who desire to make their DOLLARS bring heaping returns.

Our New Low Prices are demonstrating every day to hundreds their helpfulness and will do the same for you each and every day of

the week. **DON'T FAIL** to visit this store

FRIDAY, SATURDAY and MONDAY

Enthusiastic shoppers picked up some extra good values here last week, and you can do the very same this week.

Just glance through these columns, from every corner they claim your attention—to this value or that value, each bearing its own particular significance to purchasers. And then again, we have so many clear-away lines, and odd lots, etc.—Merchandise that must move before our immense Spring stocks tumble in on us. Come and do some profitable shopping here.



SPECIAL!

3-piece Rugby Tweed Suits of good English make; assorted Greys and Browns; to fit 8 and 9 years only. Reg. \$18.00. Friday, Saturday & Monday, 10.50

SAVINGS That Count

on items that you must have. **BUY NOW.**

TURKISH TOWELS—Large Pawn and Crimson Striped Turkish Towels for every-day use. Reg. 55c. Friday, Sat. & Mon. 48c.

WHITE TOWELS—A good wearing Towel in a fine White Turkish make; large size. You would not desire better quality. Friday, Saturday & Monday, 68c.

KITCHEN TOWELS—Strong Linen Crash Towels for kitchen use; real serviceable size and real good wearing quality; hemmed. Friday, Saturday & Monday, 19c.

ECRU LACE—A few pieces of 46 inch Ecrú Curtain Lace, showing a broad scroll and border and fine net centre. Regular 85c. Friday, Saturday & Monday, 55c.

SASH LACE—A beautifully fine mesh pure White Sash Lace, prettily bordered; looped for sash rod. Reg. 65c. Friday, Saturday & Monday, 45c.

WHITE SCRIMS—36 inch soft hanging White Curtain Scrims, showing a pretty self border; extra good quality. Reg. \$1.10. Friday, Saturday & Monday, 69c.

LADIES' HOUSE SLIPPERS—Fine Donagola House Slippers, with tow heel and semi-broad toe; real comfort shape. Reg. \$4.00. Friday, Saturday & Monday, \$2.89.

LADIES' ANKLE SUPPORTS—Made like a corset, with fine whalebone supports; in Black only; trim fit. Reg. \$1.60 pair. Friday, Saturday & Monday, 98c.

Girls' Snug-Fitting Coat Jerseys

Real snug-fitting Knitted Coat Jerseys in assorted shades, belted, 2 pockets; suitable for those out working, suitable for about the house and just nice and comfortable to wear under your raglan. Reg. \$3.50. Friday, Saturday and Monday, \$1.89

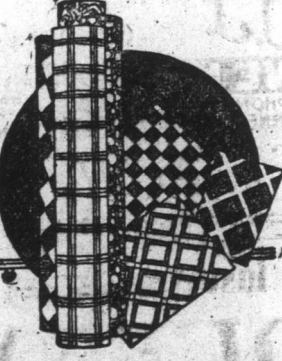
Jap Straw Hearth Rugs

STRAW RUGS—Convenient size Japanese Straw Hearth Rugs; nice selection of patterns, and very suitable for bedroom, sitting room or den. Special Friday, Saturday & Monday, \$2.25

Cotton Blankets

COTTON BLANKETS—Extra full size well fleeced Cotton Blankets; one of the best brands we handle; Blue or Pink striped border. Friday, Saturday & Monday \$3.35

SALE OF Remnants of FLOOR CLOTHS.



We offer some very serviceable lengths of Linoleums and Floor Canvases at very saving prices for shoppers here Friday, Saturday and Monday.

See These

Ladies' "Juliet" SLIPPERS

Home comfort—a pair of these warm Felt Juliet Slippers, in shades Wine, Navy, Grey, Brown and Black.

Regular 4.00.

Friday, Sat. & Monday, 2.49

RENOWNED VALUES in English Cashmere HOSIERY

LADIES' PLAIN HOSIERY—Beautiful Plain Wool Cashmere Hosiery, in Navy, Grey, Heather, Brown and Fancy leg; reputable brand. Values to \$3.00. Friday, Saturday & Monday, \$1.49

LADIES' GREY HOSIERY—Fashionable shades in Plain Wool Cashmere, mostly Greys. You'll like this line. Reg. \$1.20 value. Friday, Saturday & Monday, 98c.

LADIES' NAVY HOSE—A splendid line of plain Navy Cashmere finish seamless Hosiery. Friday, Saturday and Monday, 75c.

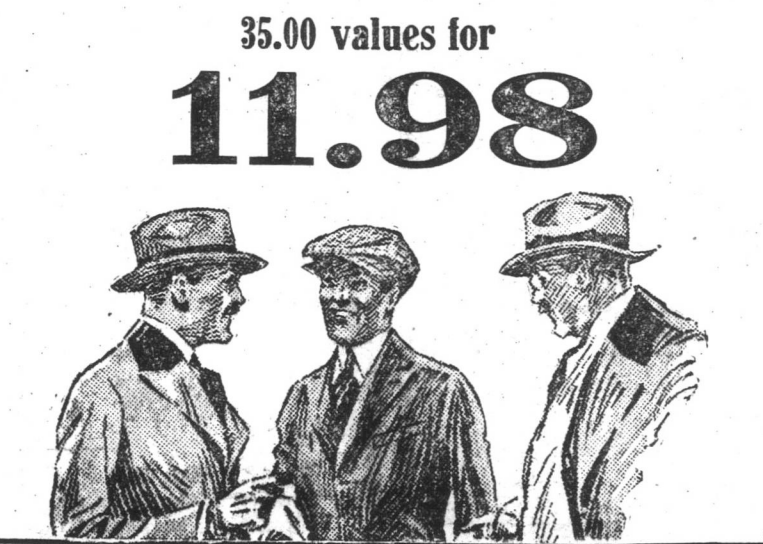
LADIES' WHITE HOSIERY—Superior quality White Wool Cashmere Hosiery, heavy double tops; splendid value today. Reg. \$1.29. Friday, Saturday and Monday, \$1.60.

LADIES' BLACK HOSIERY—Plain Black Wool Cashmere Hosiery of high degree; offer in every detail. Reg. \$1.60. Friday, Saturday and Monday, \$1.29



JUST I LOOK at this extraordinary good offer of LADIES' High-Grade Silk DRESSES

Come and see this display of pretty Silk Dresses. You have never seen Dresses of such excellence associated with such a commonplace price. Your choice of long or short sleeves, embroidered and winsomely trimmed in the newest styles; shades of Brown, Navy, Sage, Green, Plum and Sand; assorted sizes. Regular value to \$35.00. Friday, Saturday and Monday, 35.00 values for 11.98



VALUES Especially Good from the Men's & Boys' Dept.

MEN'S PYJAMA SUITS—Good looking Striped Flannelette Pyjama Suits in assorted sizes. This is a new line and offers splendid value. Friday, Saturday and Monday, the \$2.85

BOYS' SLEEPING SUITS—Combination Pyjama Suits, pearl buttoned and silk braided button loops; made of good looking Striped Flannelette; assorted sizes up to 12 years. Friday, Saturday & Monday, the suit \$1.70

MEN'S WOOL GLOVES—In assorted Browns, Greys and fancy mixtures. Gloves worth up to \$1.50 pr. Friday, Saturday & Monday 98c.

MEN'S TOP SHIRTS—Full fitting Shirts with turn over soft collars, pretty pin stripe patterns; as well as a line of fine checks. Reg. \$4.00. Friday, Saturday & Monday, \$2.40

WINTER SOCKS—Heavy Blue and Tan Socks in plain shades and plain knit; good enough for knockabout wear. Special Friday, Saturday and Monday, 58c.

BOYS' TWEED PANTS—A special line of these in best wearing English Wool Tweeds; real winter weight and well made; 2 side pockets; assorted sizes. Special Friday, Saturday & Monday \$2.45

MEN'S SERGE PANTS—Made of best grade Navy Serge, perfectly cut and finished, with strap hips and cuff bottoms; any size; limited stock. Special Friday, Saturday & Monday, \$7.45

BOYS' STORM RUBBERS—Sizes 1 to 5 in a dependable brand for boys who are rough on any make. Reg. \$1.55. Friday, Saturday & Monday, \$1.19

BOYS' TOP SHIRTS—"Aero" Top Shirts in good wearing Striped American Cottons; collars attached, pocket; assorted sizes. Reg. \$2.20. Friday, Saturday & Monday, \$1.30

BOYS' WOOL GLOVES—Coloured Scotch Wool Gloves in assorted Heathers and plain, for little chaps up to 10 years. Reg. \$1.10. Friday, Sat. & Monday, 83c.

SHOW-ROOM SPECIALS!

COSY COATS—Ladies' fine Jersey Cozy Coats, sleeveless, buttoned front; shades of Green and Heather; sizes 36 to 42. Reg. \$3.00. Friday, Sat. and Monday, \$2.49

FEATHER BANDS—Coloured Feather Bands in Navy and Brown. Just the thing to brighten up your favorite shape. Regular \$2.30. Friday, Saturday and Monday, 69c.

"ERECTON" BRACES—Erecton Shoulder Braces; great health producers; for Misses and Ladies; they keep the young frame shapely and erect; made in heavy White Cotton, elastic strap shoulders. Regular \$1.30. Friday, Saturday \$1.08

BUNGALOW APRONS—Full fitting Gingham Bungalow Aprons in pretty coloured stripes and checks, with plain trimmings, square neck, belt and pockets, short sleeves; extra good material for washing; sizes 34 to 46 inch bust. Reg. \$2.90. Friday, Saturday & Monday, \$1.98

CROCHET BALLS—In shades of Pink, Sage, Grey and Cream, for trimming and for girle ends, etc. Reg. 15c. each. Friday, Saturday & Monday, 2 for 15c.

POND'S CREAM—New Cold Cream & Vanishing Cream, in white stone pots with white metal caps; the best you can buy. Reg. 65c. pot. Friday, Saturday & Monday, 59c.

Children's Winter Hats—Prettily trimmed Velvet and Felt Hats for little girls—Hats of the better quality that you would just love to see on your own little girl. Values to \$3.50. Friday, Saturday and Monday, 69c.

SALE OF DRESS SERGES and Suitings—Great Values

NAVY DRESS SERGE—54 inch Navy Dress Serge; a heavy dress for Spring Suits or Costumes; best English quality; 2 pretty patterns for this sale. Reg. \$6.00 yd. Friday, Saturday & Monday, \$2.38

WHITE GABARDINE—36 inch White Gabardine of superior quality; nice for Skirts, Costumes, or Middie and for children's wear. Reg. \$1.50 yard. Friday, Sat. & Monday 85c.

WHITE FLANNELLETTES—480 yards of superior quality soft White Flannelette Topped American Flannellette; good working width. Special Friday, Saturday and Monday, 26c.

STRIPED FLANNELLETTES—Pretty Blue and White and Pink and White Striped American Flannellette, for making up children's night garments, underwear and such like; excellent quality. Friday, Saturday and Monday, yard 31c.

SHIRTINGS—36 inch pure White sheer surface American Shirtings, renowned for the superior quality and their value. Friday, Saturday and Monday, yard 28c.

Damaged TABLE DAMASKS

228 yards of slightly damaged White Table Damasks, 72 inches wide; the imperfection is along the finished edge, easily stitched. Value for \$1.30 yard. Friday, 98c. Saturday and Monday



Fashion Plates.

AN INTERESTING COSTUME.



3840-3823. Effective and youthful is this smartly fashioned model, with its simple artistic lines, and comfortable new sleeve. One could wear the blouse with any "slip" or foundation skirt. As here shown it is combined with a smart two piece skirt. As illustrated, the blouse may be finished with the fulness held by the belt in "straight line" effect, or bloused over a sash or girle of silk or ribbon with loop and ends at the side or a smart bow over the back. Beaded crepe and charmeuse will be attractive for this style. Crepe de chine, taffeta, serge, velours and duvetyn are also good.

The Blouse 3840, is cut in 7 Sizes; 34, 36, 38, 40, 42, 44 and 46 inches bust measure. It will require 3 1/2 yards of 40 inch material for a medium size.

The Skirt 3823, is cut in 7 Sizes; 26, 28, 30, 32, 34, 36 and 38 inches waist measure. The width of the skirt at the foot is about 2 1/4 yards. It will require 2 1/4 yards of 44 inch material for a medium size.

The blouse may be finished in skirt length thus forming a very pleasing chemise dress. Any "slip" or skirt may be used in place of the skirt illustrated.

This illustration calls for TWO separate patterns, which will be mailed to any address on receipt of 15c FOR EACH pattern in silver or stamps.

SOME NEW THINGS FOR THE BABY.



2186. Infant's Set, consisting of a Cap, a Sack, a Night Gown and a Dress.

Muslin, cambric, flannel or flannelette will do nicely for the night gown, while lawn or nainsook is suitable for the dress, with embroidery, tucking and lace or edging for decoration.

The sack will look well in silk, cashmere, flannel, or flannelette, and the cap is suitable for lawn, silk or "all-over" embroidery. For the dress of flouncing, it will require 1 1/4 yard of 36 inch material with 1 1/4 yard of plain material for yoke and sleeves.

Of nainsook or lawn 36 inches wide it will require 2 1/4 yards. The gown will require 2 1/4 yards of 24 or 27 inch material. The cap, 1/4 yard of 18 inch material. The sack requires 3/4 yard of 27 inch material.

A pattern of this illustration mailed to any address on receipt of 15 cents in silver or stamps.

No.

Size

Name

Address in full:—

.....

.....

.....

.....

.....

.....

.....

.....

.....

.....

.....