

## MUNICIPAL ENGINEERS, CONTRACTORS AND MATERIALS

**WILLIS CHIPMAN**

Hon. Grad. McGill University.  
M. Can. Soc. C.E. M. Am. Soc. C.E.  
Mem. Am. W.W. Ass'n.  
**WATERWORKS, SEWERAGE WORKS, GAS  
WORKS, ELECTRIC LIGHT AND  
POWER PLANTS**  
Reports, Surveys, Construction, Valuations  
**103 BAY STREET - TORONTO**

**R. E. SPEAKMAN, C.E.**

A. M. Inst. C. E., 1878.

**CONSULTING ENGINEER**

Waterworks, Sewerage and Sewage Disposal.  
Municipal Improvements.  
Granolithic Pavements.  
Electric Light Plants.  
Drainage and Irrigation of Land.  
Coal Handling Plant and Machinery.  
Plans, Specifications and Estimates.  
Construction and Valuations.

Canada Life Building - TORONTO

**Roderick J. Parke**

Am. Can. Soc. C.E., A.M. Amer. Inst. E.E.

**CONSULTING ENGINEER**

Hydraulic Power Development. Long Distance  
Power Transmission. Steam Plants, Electric  
Lighting and Power Systems. Tests.  
Valuations. Reports.

409-410 Temple Building, TORONTO, CANADA

Telephones { Office—Long Distance Main 3047  
{ Residence—Long Distance North 2204  
Telegraphic address: "Rodparke."  
W. U. Code, Univ. Edition.

**Ernest G. Hopson**

Member Boston Society Civil Engineers.

Waterworks, Sewerage, Power Development,  
Structural Design.

**REPORTS, DESIGNS, SURVEYS AND  
SUPERVISION.**

Offices: 35 Barrington Street, Halifax, N. S.  
Commercial Bank Bldg., Sydney, C. B.

**H.F. STRICKLAND****ELECTRICAL ENGINEER**

**SPECIALTY** Reports, Valuations, &c. for  
negotiations relative to Municipal  
Ownership.

35 ADELAIDE ST. E., TORONTO

PHONE, MAIN 1898.

**ROSS & HOLGATE****Consulting and  
Supervising Engineers**

Waterworks, Electric Light and Power  
Plants, Structural Work, Reports,  
Estimates, Arbitrations.

17 ST. JOHN ST. - MONTREAL

MCKINNON BLDG. - TORONTO

**Percival W. St. George**

Mem. Inst. C. E. London, England.  
Mem. Can. Soc. C. E.

**CONSULTING ENGINEER**

Railway, Sewerage, Water, Hydraulic,  
Expert and Arbitrations, &c.

BELL TELEPHONE BLDG. MONTREAL

Telephone, Main 4717.

**JAMES C. KENNEDY**

MEM. CAN. SOC. C.E.

**CIVIL AND HYDRAULIC ENGINEER**

Examinations, Reports, Plans, Estimates,  
Supervision of Construction, Water  
Powers, Water Works, Sewerage, etc.

P. O. Box 710, Owen Sound, Ont., and  
377 Dorchester Street, Montreal, Que.

Please mention THE CONTRACT RECORD  
when corresponding with advertisers.

# THE PHOENIX BRIDGE & IRON WORKS, — MONTREAL — GENERAL STEEL CONTRACTORS

Large Stock I BEAMS, CHANNELS, ANGLES, TEES, ZEES and  
PLATES always on hand.

**Portland Cements...**

HIGH GRADE GERMAN BRANDS FOR GRANOLITHIC  
AND ARTIFICIAL STONE SIDEWALKS.

**Sewer Pipes,** Best English Cements. Best Belgian Cements  
**Culvert Pipes, &c.** **W. McNALLY & CO., Montreal**

**W. & F. P. CURRIE & CO.**

345 St. James St., Montreal

Importers of

SEWER PIPES,

CULVERT PIPES, ETC.

VENT LININGS,

FLUE COVERS,

FIRE BRICKS,

FIRE CLAY,

WHITING.

PORTLAND CEMENTS,

HIGH GRADE ENGLISH

" " GERMAN

" " BELGIAN

PLASTER OF PARIS

BORAX,

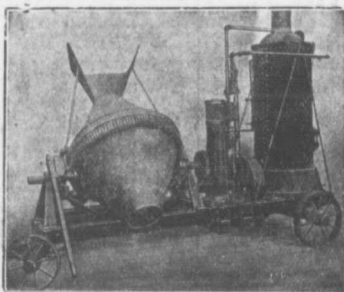
CHINA CLAY.



SMITH  
CONICAL  
CONCRETE  
MIXER

18

Different  
Sizes and  
Styles.



Mixes in Batches. Discharges by Tilting while  
Running. Mounted on Skids or Trucks.  
Catalogue on Application.

— SOLE CANADIAN AGENTS —

**W. H. C. Mussen & Co., 763 Craig St.,  
MONTREAL**

**CANADIAN  
CONTRACTOR'S  
HAND-BOOK**

and  
Estimator

Third Edition

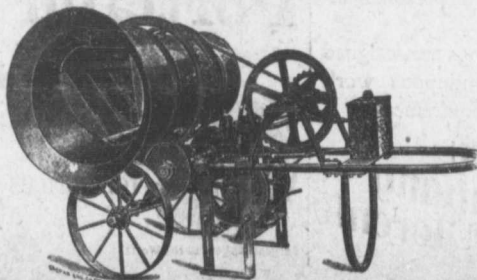
Price \$1.50; to  
subscribers of  
the Canadian  
Architect and  
Builder, \$1.00.

SEND FOR A COPY

C. H. Mortimer  
Publishing Co.  
Toronto.

**THE McKELVEY CONCRETE MIXERS**

MANUFACTURED BY **W. A. McKELVEY,** McKinnon Building,  
TORONTO.



These machines  
are made to mix  
either continu-  
ously or in  
batches, and can  
be operated  
either by Hand,  
Steam or Gas-  
oline Power