

MEN'S INTER-CLASS HOCKEY LEAGUE

STANDINGS as of Sunday January 14, 1973

RED DIVISION

TEAM	GP	W	L	T	PF	PA	TPS
Science 34	6	5	0	1	24	5	11
P.E. 4	5	4	0	1	16	5	9
Bus. 4	5	4	0	1	15	7	9
*Law 31	5	2	2	1	10	11	5
*STU A	5	2	2	1	3	12	5
C.E. 5	5	1	4		10	14	2
**EE 5	5	0	4	1	4	9	1
For. 5	6	0	6		7	26	0

GREEN DIVISION

TEAM	GP	W	L	T	PF	PA	TPS
P.E. 3	5	5	0		17	4	10
STU Green	5	4	1		13	5	8
Chem Eng 345	6	4	2		15	14	8
Bus. 3	5	3	2		16	13	6
CE 4	5	3	2		12	9	6
Law 21	5	3	2		9	10	6
Sur Eng	5	2	3		14	18	4
Arts 4	6	1	5		3	17	2
**For. 1	8	0	8				0

**Defaulted from league play. Each team has been compensated for a win against Forestry 1.

BLACK DIVISION

TEAM	GP	W	L	T	PF	PA	TPS
*P.E. 2	5	5	0		19	7	10
Arts 3	5	4	1		11	13	8
Bus. 2	6	3	3		17	11	6
Sci. 2	4	2	2		6	6	4
*Ed.	5	2	3		15	12	4
Eng 2	5	2	3		17	16	4
For 2 & 3	6	2	4		12	14	4
*STU Gold	4	1	3		3	9	2
*Sci. 1	4	1	3		2	14	2

*Charged with one default

Ladies Intramurals

Our first set of Ice Hockey games took place last Monday and it was a great success. Teacher's College and Lady Dunn T-wing played the first game with Lady Dunn winning with a score of 2-1. Following this Lady Dunn River Wing won against the University of St. Thomas girls by 4-0 and finally the City team, under Lynn Kirk, defeated Lady Dunn Parking Lot Wing by an overwhelming score of 8-0. More games are already scheduled for this coming Monday, January 22nd, with the first game beginning at 9:00 p.m., at which time the City team under Marcia Biers vs ladies faculty; at 9:30 p.m. Lady Dunn T-wing vs Maggie Jean, and at 10:00 p.m. Tibbits Hall River Wing vs. City team under Lynn Kirk. It would be well appreciated if all participants could be there 15 minutes before your game is scheduled so that

you may be ready to get on the ice immediately after the previous game has finished. Each game is half an hour with ends being changed after 15 minutes of play. All essential equipment is available at the rink.

Basketball begins next week on Wednesday, January 24th at 8:00 p.m. in the main gym. All entries must be in by Tuesday, January 23rd at 12:00 noon. Get hold of your captain immediately so that she may submit your name, or simply organize a team yourself and submit it to Women's Intramurals at the Athletics Department. Remember we are running under the House System and therefore your team must consist of only members of your House. The days go quickly so do it right now!!! The basketball schedule will be posted on Jan. 23rd at the gym.

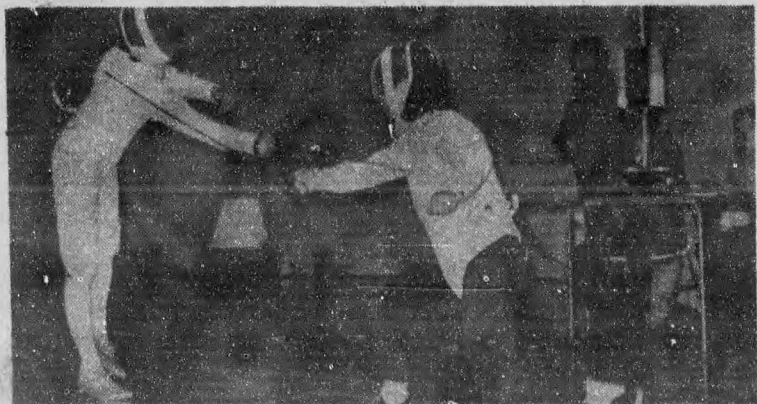


Photo by Bob Boyes

Bloomers lose to city team

Down by five points at the half, Fredericton T & E came back to score an upset 58-56 victory over the University of New Brunswick Red Bloomers ladies varsity basketball team in exhibition play at the Lady Beaverbrook Wednesday.

Karen Lee led the victors with 34 points, while Janet Goggin with 16 and Helen Jensen with 15 were top point getters for the Bloomers.

The Bloomers were called for 17 fouls, while T & E were whistled down 14 times.

The score at the half was 32-27.

T & E: Cathy Halkett 6, Marilyn Watts 4, Barb Lewis 0, Karen Lee 34, Carolyn Cameron 4, Cindy Clark 0, Joan Aalund 4, Barb Cull 2, Barb Avin 4.

Red Bloomers: Anne Fenety 1, Helen Jensen 15, Janet Goggin 16, Dawne Wishart 4, Leslie Mizner 6, Bev Ogilvie 0, Lynn Kirk 5, Linda Bicknell 7, Debra Holt 2.

The UNB JV girls' basketball team has got underway again this term. The girls on the team are Judy Best (co-captain), Barb Lanning, Brenda Ferguson, Mary Lou Reid, Jan Reichert, Betsy Colwell (co-captain), Wendy Corey, Cathy Collins, Deena Harris, Wendy Bernier.

To start the second half of the season the girls took on the STU girls. At half time Saint Thomas led 21 to 14 but UNB came back in the second half to tie the score 36-36 at the

end of regulation time. In a 5 minute overtime period STU out-scored UNB 11 to 0 to win the game 47-36. Tensie Skidd had 15 points to lead STU while Theresa McEachern had 10. Barb Lanning had 10 points for UNB.

The girls then travelled to Moncton to play U de M. The girls tried hard but still came out on the short end of a 54-36 score. U de M led 24-16 at half. Nicole Roy led Moncton scorers with 16 and Gisele Vautour had 15. Barb Lanning once again led UNB scorers with 14 points.

UNB next plays St. Stephen High in an exhibition game, then January 26 the girls take on UNBSJ here at 6:00 p.m.

SAA NOTES

OLD BUSINESS:

Item 1: A committee met with Mr. Eric Garland to discuss plans of development of athletic facilities on an off campus.

If anyone knows of someone who can contribute to athletic scholarships they are to contact Frank Wilson.

Money seems to be the main concern as far as further development goes.

Item 2: Report from policy committee meeting.

It was decided that the recreational club proposals should be looked into and restated.

The Athletic Board Policy was reviewed. It seemed that the order priorities were not adhered to and that the athletic budget is too flexible.

It must be decided whether we want to promote athletics or give everyone a chance in participating.

Apparently, concerning the budget, it can not be published because there are changes every day.

NEW BUSINESS

Item 1: A request for financial support was made to send a shooting team to Yale Invitational Intercollegiate Clay Target Tournament. It was suggested that they raise the funds by putting on various events.

1973 Snow Frolic Rally

The rally will be about 75 miles long, over good winter roads in the Fredericton area.

The Driver's Briefing will consist of a RALLY SCHOOL designed to acquaint beginners with the various types of instructions encountered in the rally. The instructions will not be difficult if you attend the school, but will be above the Novice Level; similar to the type expected in a Regional Class event, such as the Winter Carnival Rally, to be held on March 3, 4. PLEASE BE ON TIME FOR THE RALLY SCHOOL!

Note: As an incentive to UNB students, particularly those participating in Business Week, there will be offered a NOVICE class, with simpler instructions and timing so that any novice may enjoy rallying in this category. Any complete novice crew may participate in this class.

Sunday, January 21, 1973. Student Union Building, UNB Campus, Fredericton.
Registration begins: 11:30 a.m.
+Driver's Briefing: 12:30 p.m. SHARP
First Car Away: 1:30 p.m.
Finish: Approx. 4:30 p.m.
Entry Fee: \$2.50 CASC member-student

\$3.00 non-member
Entry fee

Classes: Equipped, Non-equipped, and Novice (see above).
Organizers: Alvin Ashfield, Steve Landry.
Chief Control Marshall: Dave Murray.
Scoring & Refreshments: Hazel Ashfield.

Other events to keep in mind: the TRAMCO WINTER SERIES of ice Dices (driving skills): Saturday, Jan 20: SUB parking lot. Registration begins at 12:00, runs at 1:30. Entry fee \$1.00, \$1.25.
Saturday Feb 3 (date subject to change to Feb 4): Winter Carnival Ice Dice, UNB Campus, Fredericton.
Saturday, Sunday, March 3, 4: Winter Carnival Rally; if you can't enter, please help by manning a control.

Regular Meetings: 1st and 3rd Wednesday of each month: Student Union Building, Room 26. All Welcome...

For further information, contact Alvin Ashfield at 472-6967.

Results of UNB SCC "Ice Dice" held Sunday, January 14, 1973 at Zeller's Parking Lot - sponsored by "Tramco Winter Series":

(1) 1300 cc class and under: Non-studded tires - Simon Leigh - in a min: Cooper (sponsored by Tramco Motors) - 1:14.0
Studded - Alvin Ashfield - Austin America - 1:11.2.

(2) 1300 to 2000 cc class
Non-studded - Steven Landry - fiat 124 - 1:21.1
Studded - Bruce McMullin - Datsun 510 - 1:22.1

(3) 2000 cc and over
Non-studded - Simon Leigh - Datsun 240Z - 1:23.7
Studded - Doug Thompson - Corvair - 1:23.4
Fastest time of day - Alvin Ashfield 1:11.2
16 cars entered.

GAIETY MEN'S & BOY'S SHOP LTD.

JANUARY CLEARANCE SALE

! Now In Full Swing !

Reductions Ranging From 20% - 33 1/3% with

Some Suits Worth up to \$115.00

NOW Selling for \$33.00