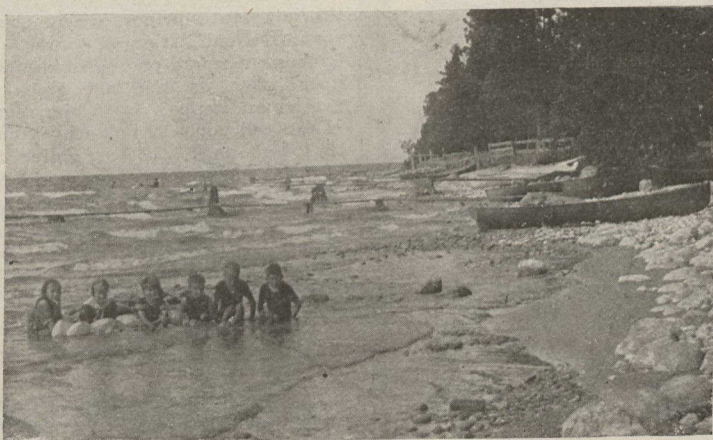


Spend the Week End at Lake Simcoe



Boating
Bathing
and
Fishing



The Trip for the BUSYMAN and HIS FAMILY. Hotel Accommodation may be secured at the following Summer Resorts

KESWICK ROCHE'S POINT ORCHARD BEACH BRIGHTON BEACH JACKSON'S POINT

About two hours' journey from Toronto, passing through "THE HIGHLANDS OF YORK," the most picturesque TROLLEY RIDE in the Province. Large, Comfortable Interurban Cars with Smoking Compartments. A Special Car Service is operated on Saturday afternoon from Toronto. "BUSINESS MEN LIMITED" Cars operated to Toronto on Monday morning. For full information as to rates and time table apply to the Traffic Department.

Toronto & York Radial Railway Company

Telephones Main 7044, North 4516 or 4517

Head Office: King and Church Streets, Toronto

Time Table Mailed on Request.



The Royal Line

To Europe

Luxury with Economy

3 Days on the Atlantic

THE ST. LAWRENCE ROUTE

No more magnificent river trip can be found anywhere else in the world. A two-day sail down the mighty, placid river on the splendid Royal Mail Steamships


**ROYAL EDWARD
ROYAL GEORGE**

Two days of unequalled scenic and historic interest. Then a little more than **THREE DAYS ON THE ATLANTIC** to Bristol (Avonmouth), thence Special Express Trains whisk the traveler to London in two hours.

These steamers are in a class by themselves in Appointment, Seaworthiness and Beauty of Interior.

The Private suites of Apartments; luxurious Public Cabins treated after historic periods in decorative art, are unequalled by anything on the Atlantic.

For all information apply to steamship agents, or the following general agents of the Company: H. C. Bourlier, Canadian Northern Building, Toronto, Ont.; Guy Tombs, Canadian Northern Building, Montreal, Que.; P. Mooney, 123 Hollis Street, Halifax, N.S.; A. H. Davis, 272 Main Street, Winnipeg, Man.



CANADIAN PACIFIC RAILWAY

Before planning your Summer outing, write for a C. P. R. Booklet outlining the most popular resorts and fishing grounds located along the line of the Canadian Pacific Railway.



Visit Muskoka Lakes, Point-au-Baril, Kawartha Lakes, French and Pickering Rivers.

"The C. P. R. is the popular summer resort route."

Full particulars from any C.P.R. agent, or write M. G. Murphy, Dist. Pass. Agent, Toronto.



SPRING FISHING

"The Highlands of Ontario"
Is the Fisherman's Paradise.

THE GRAND TRUNK RAILWAY SYSTEM
THE DOUBLE TRACK ROUTE

Is the only line reaching all these resorts.

THE KIND YOU CATCH WHERE THEY ARE CAUGHT.

MUSKOKA LAKES—Black Bass, Pickerel, Salmon Trout.
KAWARTHA LAKES—Speckled Trout, Black Bass and Maskinonge.
LAKE OF BAYS—Speckled Trout, Salmon Trout, and Black Bass.
ALGONQUIN PARK—Speckled Trout, Black Bass, and Salmon Trout.
TEMAGAMI—Black Bass, Lake Trout, Speckled Trout, and Wall-eyed Trout.
LAKE NIPISSING—Black Bass, Maskinonge, Pickerel, and Pike.
GEORGIAN BAY—Black Bass, Salmon Trout, Lake Trout, Pickerel, and Trout.

OPEN SEASONS.

BLACK BASS—June 16th to April 14th following year.
SPECKLED TROUT—May 1st to September 14th.
SALMON TROUT AND LAKE TROUT—Dec. 1st to Oct. 31st following year.
MASKINONGE—June 16th to April 14th following year.
PICKEREL—May 16th to April 14th following year.

Write to the following Agents for full particulars—how to get there, maps, rates, etc.: A. E. DUFF, Union Station, Toronto, Ontario; J. QUINLAN, Bonaventure Station, Montreal, Quebec; W. E. DAVIS, Passenger Traffic Manager, Montreal; G. T. BELL, Asst. Passenger Traffic Manager, Montreal; H. G. ELLIOTT, General Passenger Agent, Montreal.