

The "Ideal" High Speed Engine...

Built by the GOLDIE & McCULLOCH Co., LIMITED, GALT, ONT., is particularly adapted to direct connected work on account of its Perfect Balance, Quiet Running, Automatic Lubrication and Cleanliness, in addition to its Massive and Compact Construction. Write for a Handsome Catalogue if you are interested in steam plants.

THE GOLDIE & McCULLOCH CO., LIMITED, GALT, ONTARIO.

THE Defiance Machine Works,

DEFIANCE, OHIO, U.S.A.

Established 1850

INVENTORS AND BUILDERS OF UP-TO-DATE
NINETEENTH CENTURY

AUTOMATIC Wood-Working Machinery

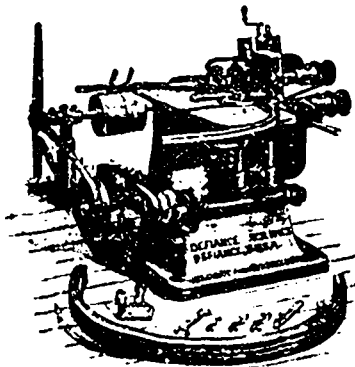
For Making

WAGON AND CARRIAGE WHEELS, HUBS, SPOKES, RIMS
FELLOES, SHAFTS, POLES, NECK-YOKES, SINGLE-
TREES, BARREL HOOPS, Etc., Etc.

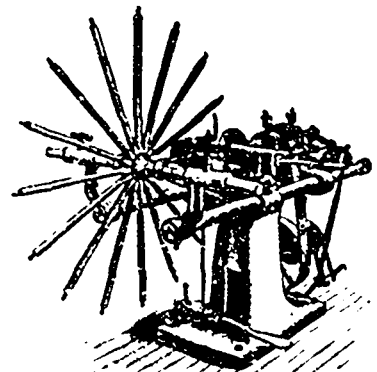
Send for 300-Page Catalogue—FREE
GENERAL CANADIAN AGENT'S

ESTATE OF T. T. COLEMAN

SEAFORTH, ONTARIO, CANADA



RIM PLANING MACHINE.



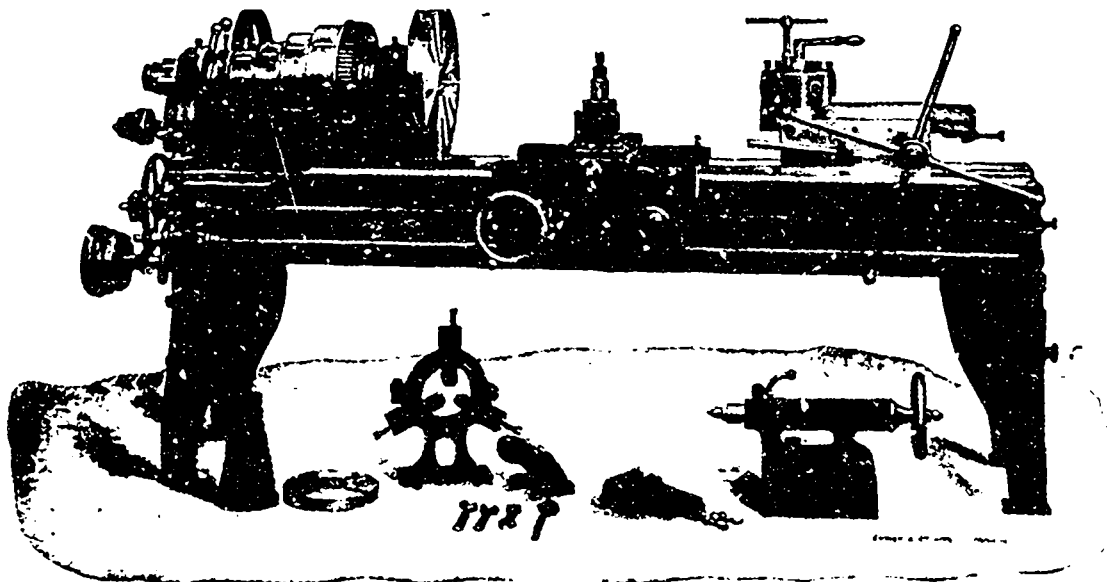
WHEEL TENONING MACHINE

JOHN BERTRAM & SONS,

DUNDAS, - - ONTARIO.

We have a number of

Second-Hand Tools



ENGINE LATHE WITH TURRET ATTACHMENT.

When writing to Advertisers kindly mention THE CANADIAN MANUFACTURER.

Which being in
Good Order are
offered at

Very Low Prices

To clear out
Stock quickly.



PLEASE
WRITE IF
INTERESTED

