

Established 1848

SINGER, NIMICK & CO.

LIMITED

PITTSBURGH, Pa., U.S.A.

MANUFACTURERS OF

Tool Steel—Steel for Surgical Instruments, Etc.

Bicycle steel for All Parts.

Steel for all Electrical Purposes.

Sheet Steel, Hot Rolled, Bes. O.H. and Crucible, for Stamping, Drawing, Cupping. Fine Tools of all kinds, and for all purposes, where a good quality is required.

Bright Cold Rolled Steel for all purposes.**Plow Steel Harrow Discs****MR. HUGH RUSSEL**

Temple Building

186 St. James Street

MONTREAL

STEEL**STEEL****LaBelle Steel Co.****PITTSBURGH, Pa.**

Manufacturers of . . .

CRUCIBLE, SOFT CENTRE and SOLID**STEEL****For Plows and Agricultural Implements of all kinds**

Harrow Discs (plain and finished), Machinery Steel, Tool Steel, Axe Steel, Rake Teeth, and Miscellaneous Steel of all descriptions. For prices write to

W. G. BLYTH

CANADIAN AGENT

34 YONGE STREET**TORONTO**Trade Mark Manhattan.
Registered Sept. 21,
1893, No. 17,651.

MANHATTAN

**Self-Lubricating**

Plumage Packing

Is the best to be had for Engines, Pumps, with oil, hot or cold water, Steam Hammers, etc. It is made round and square. Send for circulars, or samples for trial to

GREENE, TWEED & CO.

Mfrs., 31 Chambers St., N. Y.

Timothy Greening & Son
DUNDAS, ONTARIO.**WIRE MESH FACTURERS****and METAL PERFORATORS**

Wire Cloth, all grades, Perforated Sheet Metals, of every description, all kinds of Special Perforating and Indenting done to order.

GAUTIER STEEL DEPARTMENT OF CAMBRIA IRON CO.
JOHNSTOWN, PA.

Manufacturers of

MERCHANT BAR STEEL . . .

Including Tire, Toe Calk, Machinery, Carriage Spring, Railroad Spring, Hoe, Rake, Fork, Etc.

AGRICULTURAL STEEL AND SHAPES . . .

Finger Bars, Knife Backs, Rake Teeth, Bundle Carrier Teeth, Tedder Forks and Springs, Spring Harrow Teeth, Harrow (Drag) Teeth, Seat Springs, Etc.

PLOW STEEL . . .

Flat and Finished Plow Shapes, Digger Blades, Slabs, (Penn and Pernot), Hammered Lay, Rolled Lay, Etc.

COLD ROLLED STEEL SHAFTING.**STEEL HARROW DISCS.**

: : Cambria Link Barb Wire. : :

New York Office,
102 Chambers St.Philadelphia Office,
S. W. Cor. 5th and Commerce Sts.Chicago Office,
300 Phoenix Building.Southern Office,
Chattanooga, Tenn.

From 1 to 40,000 pounds weight, of Open Hearth, Chester or Bessemer Steel.

**STEEL
CASTINGS****TRUE TO PATTERN. SOUND. SOLID.**

Gearings of all kinds, Crank Shafts, Knuckles for Car Couplers, Cross-Heads, Rockers; Piston Heads, etc., for Locomotives. Steel Castings of every description.

CHESTER STEEL CASTINGS CO.

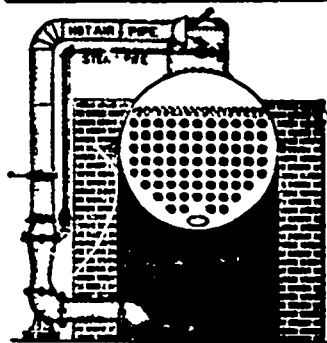
Works: Chester, Pa. Office: 407 Library St., PHILADELPHIA, Pa.

**LOCOMOTIVE TIRES, AXLES, CRANK-PINS, CAST
STEEL DRIVING WHEEL CENTRES,****STEEL-TIRED WHEELS,****STEEL FORGINGS**

... UP TO SEVENTY TONS ...

JAS. W. PYKE & CO., 35 St Francois Xavier St., MONTREAL, QUE.

Sole Canadian Representatives of

FRIED KRUPP, Essen and Gruson, Germany.**EARLE'S****Steam and Air Injectors, Exhausters, etc.**

For burning hard and soft coal screenings, run mine and lump coal under steam boilers, exhausting air, and vapors from buildings, ventilating ships, mines, etc.

Highest Medal and Diplomas given at the World's Columbian Exposition, Chicago, 1893.

The Best Blower in the market for Steam Boilers.

Send for Illustrated Catalogue to

S. R. EARLE - - Belleville, Ont.

BUY A

**PENBERTHY AUTOMATIC
INJECTOR..****Recommended by 75,000 Engineers**

WHO KNOW WHEREOF THEY SPEAK

Send for Circular and Price List.

**PENBERTHY INJECTOR CO.**
Detroit, Mich.**BRANCH FACTORY AT WINDSOR, ONT.**