

THE CARMELITE REVIEW.

NIAGARA UNIVERSITY,

College and Seminary of Our Lady of Angels,



Conducted by the Priests of the **CONGREGATION OF THE MISSION.**

THIS INSTITUTION, founded November 21, 1856, and chartered by Act of Legislature, April 29, 1863, with powers to confer Degrees, is located in the midst of the enchanting scenery of the famous Niagara Falls. It affords every facility for obtaining a thorough **Classical, Scientific, Commercial, or Ecclesiastical Course.**

Situated on the most elevated point of "MONT-EAGLE RIDGE," it receives the full benefit of the healthful and invigorating breezes that sweep over the country from the Lake. In sublimity of scenery it is unrivalled. Southward, it commands a magnificent view of the Seminary Rapids, Whirlpool, and Great Cataract; northward, it looks over the beauties of Niagara's tortuous banks, and the wide expanse of Lake Ontario dotted with sail. The buildings are large and well furnished. No pains are spared to secure the comfort of the students. The scholastic year consists of two terms: the first ends on the first of February, and the second on the last Wednesday of June.

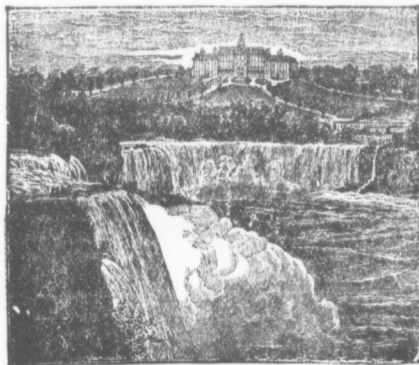
TERMS: Board, Tuition, Washing, and Mending of Articles Washed, per term, \$200. Vacation, if spent at the Seminary, \$40.

EXTRA CHARGES: Piano, Organ, Violin, Flute, Clarinet or Guitar, with use of instrument, \$40 per annum. For further particulars address the President,

VERY REV. P. McHALE, C. M.

Niagara University, N. Y.

LORETTO ACADEMY, + NIAGARA FALLS.



THIS INSTITUTION is beautifully situated on a high and healthy location, overlooking the Falls on the Canadian side, and cannot be equalled for the sublime and extensive view which it affords of the Falls, Rapids, and Islands in the vicinity. Pupils from all parts of the "Western World" have borne testimony to the fact that after some time feasting on the life-giving air and enchanting beauty of this scenery, they have returned to their homes renewed in life and vigor, as well as cultivated in mind and soul.

TERMS, \$200 per annum. Extras moderate.