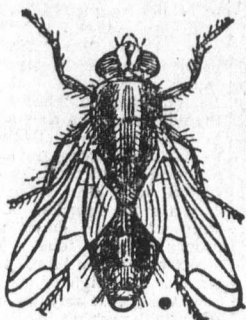


The destruction of the house fly is a public duty. Almost every American State Board of Health is carrying on a crusade against him.

His filthy origin and habits, and the fact that his body is generally laden with disease-producing germs, makes him one of the greatest enemies of the human race.

If the housekeepers of Canada will use

## WILSON'S FLY PADS



persistently, this peril would be tremendously reduced.



### Weak Heart

Many people suffer from weak hearts. They may experience shortness of breath on exertion, pain over the heart, or dizzy feelings, oppressed breathing after meals or their eyes become blurred, their heart is not sufficiently strong to pump blood to the extremities, and they have cold hands and feet, or poor appetite because of weakened blood supply to the stomach. A heart tonic and alternative should be taken which has no bad after-effect. Such is Dr. Pierce's Golden Medical Discovery, which contains no dangerous narcotics nor alcohol.

The ingredients, as attested under oath, are Stone root (*Collinsonia Canadensis*), Bloodroot (*Sanguinaria Canadensis*), Golden Seal root (*Hydrastis Canadensis*), Queen's root (*Silphium Sylvestre*), Black Cherry bark (*Prunus Virginiana*), Mandrake root (*Podophyllum Peltatum*), with triple refined glycerine, prepared in a scientific laboratory in a way that no druggist could imitate.

This tonic contains no alcohol to shrink up the red blood corpuscles; but, on the other hand, it increases their number and they become round and healthy. It helps the human system in the constant manufacture of rich, red blood. It helps the stomach to assimilate or take up the proper elements from the food, thereby helping digestion and curing dyspepsia, heart-burn and many uncomfortable symptoms, stops excessive tissue waste in convalescence from fevers; for the run-down, anemic, thin-blooded people, the "Discovery" is refreshing and vitalizing. Stick to this safe and sane remedy, and refuse all "just as good" medicines offered by the druggist who is looking for a larger profit. Nothing but Dr. Pierce's Golden Medical Discovery will do you half as much good.

## Watford Flour Mills

We have the following brands of Flour always in stock and can give you close prices on any quantity.

SUNRISE, First Patent from Manitoba wheat			
FIVE ROSE	do	do	do
ROYAL HOUSEHOLD	do	do	do
HORTON	do	do	do
HARVEST QUEEN, 2nd Pat. from Man. wheat			
GOLD DUST	do	do	do
RED ROSE, High Grade Blended Flour			
NEW ERA, Special Pastry Flour			

Get our Prices. They will surprise you. Telephone or leave your order. It will receive prompt attention.

**C. B. MATTHEWS & SON.**  
MILLERS AND FEED MERCHANTS

## TRENOUTH & CO.

DEALERS IN

Flour, Oat Meal, Corn Meal, Wheat Kernells, Flaked Wheat and Barley. All Kinds of Feed, Grain, Seeds and Poultry Food.

We carry the following makes of Flour, which are giving the BEST OF SATISFACTION:

Five Roses, Harvest Queen, Mitchell's Best, All made from MANITOBA WHEAT.  
Mitchell's Pride of the West, a Blended Flour.  
Lambert & Son's Gold Dust, a Blended Flour.  
Mustard & Son's Eldorado, a Blended Flour.  
Pastry Flour, Low Grade Flour, Bran and Shorts made by the above named millers and at close prices.

## BROCKVILLE MOWERS

The Kind that Stand the Test of Use.

With Three 14 inch Knives	- \$3.75
With Four 16 inch Knives	- \$4.50
With 10½ inch Wheels and four 16 inch Knives	- \$6.00
Curtain Stretchers,	- \$1.25 to \$2.50
Step Ladders	- 75c to \$1.20
Paint Brushes, Scrub Brushes, Window Brushes and all Housecleaning Goods.	

The N. B. Howden Est.

## RICH FIND OF FOSSIL

VICTORIA NYANZA GO. NTARY YIELDS MAMMOTH REMAINS.

Important Geological and Etiological Discoveries Have Been Made In Equatorial Africa and the Great Age of the Inland Sea Has Been Definitely Established — Explorer Not In Love With the Country.

At the beginning of last year the late Mr. Digby Pigott, one of the Assistant Commissioners of British East Africa, while camping on the eastern shore of the Victoria Nyanza, discovered some fossil remains. One of the relics was brought to England by Mr. C. W. Hobley last June, and this examination was found to be the jawbone of a Dinotherium, one of the mammals which flourished in the Lower Miocene or Middle Tertiary period, a period of time which is sometimes defined by geologists as being somewhere about three million years ago.

The discovery excited considerable interest in biological and geological circles, and the British Museum authorities, with whom the fossil was deposited, expressed the opinion that further investigations were desirable. Accordingly, Dr. Felix Oswald, the Probate Registrar of Nottingham, who will be remembered as the author of a book on the geology of Armenia, volunteered to undertake the work during his "leave" from professional duties. Dr. Oswald's offer was accepted, and last November he started for the spot on Victoria Nyanza where the discovery had been made.

It may be recalled here that Mr. Pigott met his death while shooting hippopotami on the lake. A wounded hippo charged the raft on which he was standing, upsetting its occupants into the water, where they were at once devoured by crocodiles.

At Port Florence Dr. Oswald was provided with a schooner by Sir Percy Girouard, the Governor of British East Africa, in which to make the journey to Karungu, the station on the lake where the remains were found. The place was reached on November 15 of last year. It consists of a mere huddle of native dwellings, with not a single white man nearer than Kisumu, some five days' journey north.

Dr. Oswald was accompanied only by three natives, one an interpreter speaking the language of the Kavirondo, the people of the district, and two native soldiers. Incidentally he had learned on his journey that all the published maps of the north-eastern portion of the Victoria Nyanza were inaccurate, and it was his intention to prepare a corrected map so soon as he can find time.

Once on shore he started work on his wearying and lonesome task. The time of the year was summer, and the heat was terrific, for the season was the hottest yet known in that quarter of the world. To a press representative he has described the labors and the difficulties attending his sojourn in these solitudes just south of the Equator.

"The exact point," said Dr. Oswald, "where we started our investigations was close to Karungu, in what is apparently the delta of an old river which formerly ran into the lake at that point. The heat was terrific, and the glare of the sun was blinding, and, unfortunately for me, I had forgotten to pack smoked glasses. We had considerable good fortune in our searches, and owing to the fact that the ground on which we labored chiefly was, as I have said, an old delta, we found the layers very well defined indeed."

At the top of all was a cliff of basalt, and below that was the sloping bed of the delta. The top of this bed was the ordinary black cotton soil of the district, and immediately below we found the ordinary lacustrine beds, the top one of grey clay, the second one of red clay and white sandstone, and the third one of buff sandstone and gravel.

"In each bed we found shells in plenty — all fresh-water shells — but there were very few fossils of any other character in the top bed, though we found a fair number in the second. It was in the third bed — the bed of the Lower Miocene period — however, that we had our best finds, finding another Dinotherium with teeth, and also some bones of Acraetherium and Anthracotherium, the ancient type of rhinoceros. These were all found close to the mouth of the Kuji or Kuya River, but we found other traces of fossils at points five and fifteen miles distant, in what appeared to be the same gully."

My great trouble was the insect life, which abounded to a degree which I had never experienced before, and did not believe existed. Every form of insect seemed common. Tsetse flies abounded, and I have seen the midges coming over the lake in such a cloud that the face of the sun was obscured, while the noise of their humming as they passed over me was like a great sustained note on the lower C pipe of an organ.

"Flying crickets as large as sparrows were common, and each particular form of cricket had a different noise, which he appeared to make all through the night. In addition, there were great bloodsucking ticks, which,

after they had settled on you in the night, you would find in the morning on your body as large as peas.

"Every evening when I took my soup I had between each mouthful to skim a coating of insects from the top. Ants of every description abounded, the worst of all being the 'stink ant,' a creature about three-quarters of an inch long, which emitted such a dreadful odor, that it was impossible to sleep if one of these things got into your tent. Still, insects were not my worst trouble. What oppressed me most and affected me most was the dreadful loneliness. I would never go there again by myself, and I would never advise any other white man to do so."

### LAUGHED AND LOST.

Smiles That Came at the Wrong Time and Proved Costly.

One must be most careful how he laughs or even smiles in the presence of the great ones of the earth, as is evidenced in the following instances:

Milbanke, a clever but blunt Scot, who was an expert in colonial administration, was once summoned by William of Germany in order that his valuable advice touching eastern affairs might be obtained for German guidance. The Kaiser had about decided to intrust Milbanke with a most important office in China with considerable supervision over German interests there.

It appears that during one of their conferences the Kaiser offered some absurd suggestion as to oriental diplomacy, whereat the Scot laughed. Immediately the Emperor wished him good-day and never saw him again.

It was another Scot, Duncan McVea, who advised the amiable but sensitive King Carlos of Portugal in the Government of the Cape Verde islands, at the time in a very shaky condition. It was practically decided to give McVea entire control over the islands at the handsome salary of \$25,000 a year. During one of their consultations his Majesty became greatly excited and made a mess of his English, which was usually excellent. McVea could not help smiling audibly, with the result that he was summarily dismissed and never permitted to come to court again.

It is related that once, when he was very weary after a long journey and consequently in no mood to be trifled with, the Czar of Russia, in passing through an apartment in the palace at St. Petersburg, slipped on a mat that lay on the polished floor and nearly fell. Clutching wildly at one of his attendants, the Emperor of all the Russias went through a series of gyrations extremely ludicrous to behold that nearly brought himself and his subject to the floor. Enidoff, at the time a prominent and confidential adviser to the throne, could not check a smile, a smile that the Czar turned just in time to catch. The very next day Baron Enidoff lost his post, carrying a salary of \$60,000 annually.

Van Tromp's Way of Fighting. The Dutch Admiral Van Tromp, who was a large, heavy man, was once challenged by a thin, active French officer. "We are not upon equal terms with rapier," said Van Tromp, "but call upon me to-morrow morning, and we will adjust the affair." When the Frenchman called he found the Dutch admiral bestriding a barrel of gunpowder. "There is room enough for you," said Van Tromp, "at the other end of the barrel. Sit down. There is the match, and as you are the challenger give fire." The Frenchman was thunderstruck at this terrible mode of fighting, but as the Dutch admiral told him he would fight no other way terms of reconciliation ensued.

### A Guide to Apiculture.

By direction of the Hon. Martin Burrell, Minister of Agriculture, a timely bulletin on bee-keeping has been issued by the Federal Department of Agriculture. According to a statement of the author, Dr. C. C. Gribble, Dominion Entomologist, this work has been prepared to meet a very persistent demand for information by persons who wish to learn how to begin and to continue the industry of apiculture. It was the further object of the author to increase the number of bee-keepers in Canada by indicating the advantages of bee-keeping. It is pointed out that bee-keeping returns the direct profit of a honey crop and the indirect one of improvement to yields of clover seed and fruit. It is observed that a bullock after being fed and cared for during an entire winter will not realize much more than the produce of a colony of bees in a single season. Beginners are recommended to start on a small scale with one or two hives increasing the number annually as experience is gained. This treatise of 45 pages, which is helpfully illustrated, covers in plain language the whole field of apiculture, including equipment, management, the production of honey and wax, diseases, legislation of the various provinces against bee diseases, etc. It is designated "The Honey Bee." Bulletin No. 2, Division of Entomology and No. 69, Experimental Farms. Copies may be had free by applying to the Publications Branch, Department of Agriculture, Ottawa.

IT HAS MANY OFFICES.—Before the German soldier starts on a long march he rubs his feet with tallow, for his first care is to keep his feet in good condition. If he knew that Dr. Thomas' Electric Oil, for when the Oil is in the pain is out. It is brought relief to thousands who without it would be indeed friendless.

## MEDICAL

**JAMES NEWELL, PH. B., M. D.**  
L. R. C. P., M. B. M. A. England  
Watford, Ont.

OFFICE—Main St., next door to Merchants Bank. Residence—Front street, one block east from Main street.

**R. G. KELLY, M. D.**  
Watford, Ont.

OFFICE—MAIN STREET, formerly occupied by Dr. McEwen. Residence Front St. East.

**THOS. A. BRANDON, M. D., D. V.**  
WATFORD, ONT.

FORMERLY OF SARNIA GENERAL HOSPITAL and Western Hospital of Toronto.  
Office—Main Street, in office formerly occupied by Dr. Gibson.

## CIVIL ENGINEER.

**W. M. MANIGAULT,**  
ONTARIO LAND SURVEYOR  
AND CIVIL ENGINEER,  
Box 300, STRATHROY, ONTARIO

## DENTAL

**GEORGE HICKS,**

D.D.S., TRINITY UNIVERSITY, L.D.S., ROYAL College of Dental Surgeons, Post graduate in Bridge and Crown work, Orthodontia and Porcelain work. The best methods employed to preserve the natural teeth.

OFFICE—Over Thompson's Confectionery, MAIN ST., Watford.  
At Queen's Hotel, Arkona, 1st and 3rd Thursdays each month.

**G. H. HOWDEN,**

D.D.S., L.D.S.  
GRADUATE of the Royal College of Dental Surgeons of Ontario, and of the University of Toronto. Only the Latest and Most Approved Appliances and Methods used. Special attention to Crown Bridge Work. Office—Over Dr. Kelly's Surgery, MAIN STREET, — WATFORD

## Veterinary Surgeon

**J. McILLICUDDY**  
Veterinary Surgeon,  
HONOR GRADUATE ONTARIO VETERINARY College, Dentistry a Specialty. All diseases of Domestic Animals treated on scientific principles. Office—One door south of the Guide-Advocate office. Residence—Main St., one door north of Dr. Gibson's office.

## Auctioneer

**J. F. ELLIOT.**

Licensed Auctioneer.  
—For the County of Lambton.  
PROMPT attention to all orders, reasonable terms. Orders may be left at the Guide-Advocate office.

## INSURANCE

**J. H. HUME.**

AGENT FOR  
FIRE, ACCIDENT AND SICK BENEFIT COMPANIES.  
REPRESENTING  
Five Old and Reliable Fire Insurance Companies.

If you want your property insured please call on J. H. HUME and get his rates.

—ALSO AGENT FOR—

C. P. R. Telegraph and Canada Permanent Loan and Saving Co.

Ticket Agent For C. P. R.—Tickets sold to all points in Manitoba, Northwest and British Columbia.

## THE LAMBTON

Farmers' Mutual Fire Insurance Company.  
(Established in 1875)

**J. W. KINGSTON** President.  
**THOS. STEADMAN**, Vice-Pres.  
**JAMES ARMSTRONG**, DIRECTOR.  
**A. G. MINIELLY**, DIRECTOR.  
**THOS. LITKOW**, DIRECTOR.  
**JAMES SMITH**, DIRECTOR.  
**W. G. WILLOUGHBY**, MANAGER AND SEC. TREAS.  
**J. F. ELLIOT**, FIRE INSPECTOR.  
**P. J. McEWEN**, AUDITOR.  
**ALEX. JAMIESON**, AUDITOR.  
**PETER McPHEEDRAN**, Wanstead, P.O. AGENT, for Warwick and Plympton.

## STAGE LINES.

**WATFORD AND WARWICK STAGE LEAVES**  
Watford Village every morning except Sunday, leaving Watford at 11.30 a.m., returning leaves Watford at 3.45 p.m. Passengers and freight conveyed on reasonable terms.—WILIAM EVANS Prop.

**WATFORD AND ARKONA STAGE LEAVE**  
Arkona at 9 a.m., Watford at 10.10 a.m., returning leaves Watford at 3.45 p.m. Passenger and freight conveyed on reasonable terms.—WILIAM EVANS Prop.

## GRAND TRUNK RAILWAY SYSTEM

### TIME TABLE.

Trains leave Watford Station as follows  
GOING WEST  
Accommodation, 27 ..... 8 44 a.m.  
Accommodation, 29 ..... 2 45 a.m.  
Chicago Express, 5 ..... 9 27 p.m.  
GOING EAST  
Ontario Limited, 46 ..... 7 46 a.m.  
Accommodation, 28 ..... 12 33 p.m.  
New York Express, 2 ..... 3 00 p.m.  
Accommodation, 30 ..... 5 16 p.m.  
C. VAIL, Agent, Watford