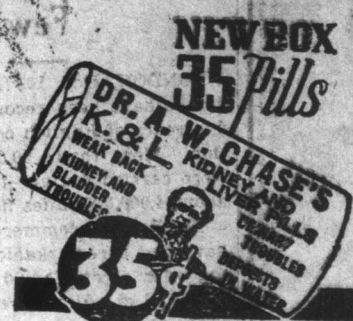


## "Was Freed of Gall Stones And Persistent Backache"

Mr. Alexander Bradley, R.R. No. 1, Carp, Ont., writes:



**Dr. Chase's Kidney-Liver Pills**

25 cts. a box of 35 pills, Edmanston, Bates & Co., Ltd., Toronto

GERALD S. DOYLE, Sole Agent.

### Grand Bank Notes

Grand Bank this season of the year is a remarkably busy town, and its little artificial harbour is the scene of continual loading and discharging. The vessels of to-day are followed by those of to-morrow, and thus the great chain of events continues. In spite of the rush of work, however, the inbred love of the sea has such a grip on these sons of the sea that the sight of a sail will bring crowds down to the pier to watch the new arrival manoeuvre its passage into the harbour.

A very familiar face seen at nearly every turn in the winding alleys, around the business premises, is that of our Member, Clyde Lake, who is very busy these days purchasing large quantities of fish. Not only has he been dealing largely in dry fish, but he is purchasing a great deal of green fish for a Gloucester firm, thereby relieving the overstocked premises and causing a great flow of ready cash.

On the whole things seem to be booming here in industrial and business centres, and everything seems to be taking on a new lease of life. The sun of prosperity seems to be rising, causing the clouds of gloom and depression to gradually fade away.

Even the social atmosphere is becoming purer and more invigorating. The Young Ladies' Guild are on the offensive making obstacles flee before them, for with hot suppers, soup suppers, etc., they seem, by hook or by crook, to be determined to get control of the shekels. Their latest attempt was made Thursday, Oct. 23rd, when the annual Harvest Festival was held by which means they raised the amount of \$525.00, which goes towards the new Academy.

The male element, encouraged by their more optimistic and energetic sex, have also made a move, for on Wednesday, Oct. 23rd, they started a drive and raised \$3200.00 or more which also goes towards the debt incurred by the building of the new Academy.

On Sunday, October 26th, there was a great Rally of the Sunday School forces at which the children performed nicely. One of the items was an address by Miss M. Forecey on the subject, "Who is my neighbour," which was well thought out and showed the broader application of the term to-day. The choir rendered special music, its numbers being augmented by a large number of talented young people. There was a large congregation at all three services.

Grand Bank is also the scene of many visitors. Among the persons at present visiting the town are Misses Roberts and Wrixon of Epworth. Mrs. Fred Penney of Carbon-ear is also visiting her old home and friends and still realises that there is "no place like home."

Mr. Roy Clarke who has just recently come from Canada to stay, has left for Corner Brook where he is taking a venture in business. His father, Mr. C. L. Clarke, a well known business man of Grand Bank is at Corner Brook supervising the construction of a business place at present. We wish Mr. Clarke every success in his new sphere of action.

CORRESPONDENT.

### Sudden Rise of Lake Waves Due to Freedom From Swell

TORONTO.—Suddenness with which storms blow up on the Great Lakes can be directly attributed to the absence of swell on these inland seas, paradoxical as it may sound, in the light of the researches of Vaughan Cornish, D. Sc., authority on strategic geography and a well known traveller.

Dr. Cornish conducted experiments on the relative speed of wind and waves on a voyage which he made from Southampton to Trinidad. The speed of the wind was measured with an ordinary anemometer, and the velocity of the waves was determined indirectly by estimating their period. Due allowance was made for the speed and direction of the liner from which the observations were made.

"The speed of the wind ranged from 14 to 24 miles an hour," said Dr. Cornish. "That of the waves was in all cases less, the difference ranging from 1 to 8 miles an hour."

This difference in velocity does not depend upon the absolute speed of the air currents, the scientist stated, but it was corrected with measurements which were made on the swell prevailing at the same time.

"When the swell and wave ran precisely in the same direction, as sometimes occurs in the region of the Trade winds, and when no swell was recorded, the speed of the waves was nearly equal to that of the wind," Dr. Cornish stated. "The difference in their respective speeds was hardly sufficient to cause a drift of smoke on land. It would not be sufficient to move a weather-vane. There was no longer a battle between wind and wave."

"The growth of the waves in both height and length was hindered by a crossing swell, and it can be safely inferred that the general absence of swell is a sufficient reason for the rapid rise of waves upon enclosed seas."

"When the wind comes on to blow in the direction of the ocean swell with a speed greater than that of the swell, the growth of large steep waves, is very rapid, doubtless more rapid than their growth from smooth water, but this occurrence is relatively rare in the North Atlantic," the geographer said. "Excepting in the rare cases when the swell and wind are in the same direction, the tendency is towards short and irregular wave fronts."

Thus the swell would appear to act as a brake on the wave forming influence of the wind, and in the case of the sudden storms and high waves which frequently occur on large lakes this restraining force is absent, and the wind can quickly work up waves cumulatively higher.

The general run of the waves on the ocean shows the direction of the wind reliably, Dr. Cornish stated. "The direction of a breaker out at sea is intermediate between that of wave and swell—the breaker being formed when they override—so that the practice of observing the direction of the curl on the water as a method of determining the direction of the wind, gives an erroneous result whenever there is a crossing swell, which is usually the condition on oceans," he warned.

### Fads and Fashions.

One notes the redingote for street wear.

A few flat fur scarfs are being worn.

The irregular hem-line is noted for evening.

Buttons used for trimming are of dainty size.

Ostrich fringe is used in self or contrasting color.

Pearl earrings, quite long, are worn for evening.

One's envelope bag may be of bright red or green.

The small collar shows a decidedly Chinese influence.

The long, close sleeve is a feature of the tailored mode.

### An Old-Fashioned Holiday Cake

MRS. BEILIE DROGAT.  
Old-fashioned pound cake with raisins—an ideal holiday cake. During this festive season there are many demands for informal teas, suppers, etc. Pound cake—keeps moist and fresh so long; particularly when filled with raisins, it is just the cake to keep constantly on hand for these emergencies. It is suitable for any occasion, afternoon teas, luncheon, midnight spread, or served with ice cream. Follow the directions very carefully and you will have a delicious cake.

1 cup butter  
1 bay sugar.  
5 eggs.  
2 cups sifted flour.  
1/2 teaspoon baking powder.  
1 teaspoon each lemon and vanilla flavoring.

1 1/2 cups raisins.  
Cream the butter until waxy; add sugar gradually, beating until mixture is very creamy and white. Beat eggs until very light; stir into mixture then add a portion of the eggs. Continue to add these ingredients alternately, beating better between each addition until smooth. Reserve about 2 tablespoons of flour to which add raisins; then carefully fold into mixture with flouring. Pour into an ungreased papered loaf cake pan and bake in a very moderate oven about 1 hour if a brick shape pan is used, or 45 minutes if in a square tin.

Seeded raisins should be cut in two with scissors.

### NO HINT.

All day, as through the town I went, I'm saying, with a sigh, "You're a silly waste your time, my friend—I do not wish to buy." For a blooming maid with eyes like stars, and men with princely airs, would sell me books and motor cars, and bonds and all well things. "High pressure salesmanship" is here, and it has come to stay; and life becomes an ordeal dread to every weary day. I have some kopecks salted down. I'd keep the roll intact, but all the agencies in town have jotted down the fact. "Go forth," the managers exclaim, to salesmen blithely and say, "pursue that guy and climb his frame, and bear his fall away. Pursue him on the mountains high, and chase him down the shore, and if he says he will not buy, pursue him all the more. So far I've guarded well my wad, the roll that cost me dear; but as I take my walks abroad the super-salesman's near. He shadows me from dawn to dark, and in the end, I know, I will not have a German mark, or any other dough. For who can ever more withstand the schemes to get his kake, when pressure salesmen, smooth and bland, are always on his trail? I sometimes envy any man who's short of silver bones, whose poor four dollars in a can are all the coin he owns. For he can walk the village street, contentment in his soul; no super-men on eager feet will chase him for his roll.

VALENTINE.

sell me books and motor cars, and bonds and all well things. "High pressure salesmanship" is here, and it has come to stay; and life becomes an ordeal dread to every weary day. I have some kopecks salted down. I'd keep the roll intact, but all the agencies in town have jotted down the fact. "Go forth," the managers exclaim, to salesmen blithely and say, "pursue that guy and climb his frame, and bear his fall away. Pursue him on the mountains high, and chase him down the shore, and if he says he will not buy, pursue him all the more. So far I've guarded well my wad, the roll that cost me dear; but as I take my walks abroad the super-salesman's near. He shadows me from dawn to dark, and in the end, I know, I will not have a German mark, or any other dough. For who can ever more withstand the schemes to get his kake, when pressure salesmen, smooth and bland, are always on his trail? I sometimes envy any man who's short of silver bones, whose poor four dollars in a can are all the coin he owns. For he can walk the village street, contentment in his soul; no super-men on eager feet will chase him for his roll.

The small collar shows a decidedly Chinese influence.

The long, close sleeve is a feature of the tailored mode.

The long, close sleeve is a feature of the tailored mode.

The long, close sleeve is a feature of the tailored mode.

The long, close sleeve is a feature of the tailored mode.

The long, close sleeve is a feature of the tailored mode.

The long, close sleeve is a feature of the tailored mode.

The long, close sleeve is a feature of the tailored mode.

The long, close sleeve is a feature of the tailored mode.

The long, close sleeve is a feature of the tailored mode.

The long, close sleeve is a feature of the tailored mode.

The long, close sleeve is a feature of the tailored mode.

The long, close sleeve is a feature of the tailored mode.

The long, close sleeve is a feature of the tailored mode.

The long, close sleeve is a feature of the tailored mode.

The long, close sleeve is a feature of the tailored mode.

The long, close sleeve is a feature of the tailored mode.

The long, close sleeve is a feature of the tailored mode.

The long, close sleeve is a feature of the tailored mode.

The long, close sleeve is a feature of the tailored mode.

The long, close sleeve is a feature of the tailored mode.

The long, close sleeve is a feature of the tailored mode.

The long, close sleeve is a feature of the tailored mode.

The long, close sleeve is a feature of the tailored mode.

The long, close sleeve is a feature of the tailored mode.

The long, close sleeve is a feature of the tailored mode.

The long, close sleeve is a feature of the tailored mode.

The long, close sleeve is a feature of the tailored mode.

The long, close sleeve is a feature of the tailored mode.

The long, close sleeve is a feature of the tailored mode.

The long, close sleeve is a feature of the tailored mode.

The long, close sleeve is a feature of the tailored mode.

The long, close sleeve is a feature of the tailored mode.

The long, close sleeve is a feature of the tailored mode.

The long, close sleeve is a feature of the tailored mode.

The long, close sleeve is a feature of the tailored mode.

The long, close sleeve is a feature of the tailored mode.

The long, close sleeve is a feature of the tailored mode.

The long, close sleeve is a feature of the tailored mode.

The long, close sleeve is a feature of the tailored mode.

The long, close sleeve is a feature of the tailored mode.

The long, close sleeve is a feature of the tailored mode.

The long, close sleeve is a feature of the tailored mode.

The long, close sleeve is a feature of the tailored mode.

The long, close sleeve is a feature of the tailored mode.

The long, close sleeve is a feature of the tailored mode.

The long, close sleeve is a feature of the tailored mode.

The long, close sleeve is a feature of the tailored mode.

The long, close sleeve is a feature of the tailored mode.

The long, close sleeve is a feature of the tailored mode.

The long, close sleeve is a feature of the tailored mode.

## First National Attraction—STAR MOVIE TO-DAY



William Collier, Jr. and Mary Philbin in "The Age of Desire"

It's a Cry from a Mother's Heart for a once unwanted son, a renunciation of the riches and luxury she had bargained him for. It grips the soul. A son's mistake and a repentance.

**ADMISSION: 20 cts.**

### MONDAY--CORINNE GRIFFITH

## "Lillies of The Field"

A Truly Wonderful Production.

Coming--Norma Talmadge in "Ashes of Vengeance."

## CASINO THEATRE

H. WILMOT

MARJIE

## YOUNG - ADAMS Company

LAST AND FINAL WEEK OF PRESENT ENGAGEMENT

Offering Wednesday and Thursday a Play that is Different

## "The Call of The Woods"

With Marguerite A. Young and Thos. J. Walsh (St. John's Own Boy) in the leading roles.

FRIDAY NIGHT:

The season's dramatic hit, and in the opinion of many the greatest of them all.

## "The Veiled Woman"

Repeated by popular request. Get your seats now.

SATURDAY MATINEE AND NIGHT

The greatest of all moral lessons:

## "Ten Nights in a Barroom"

With H. Wilmot Young as Joe Morgan. During the evening Mr. Young will recite "The Face on the Barroom Floor" and "Rum's Maniac." Farewell speeches by members of the company.

SPECIAL MATINEE SATURDAY—FUN IN GALORE AND CHILDREN'S CONTEST—DON'T LET THE KIDDIES MISS THIS.

There is a constant state of war between the farmer and the meadow ant.

As the farmer is busy pulling down the smaller ant heaps with his machine, and digging out the larger, the ants are just as hard at work rebuilding their homes, or starting new nests close by.

The ant has certain advantages. Thousands of labor-ants start work at daylight and continue until dark, and there is a constant stream of enthusiastic and skilled recruits.

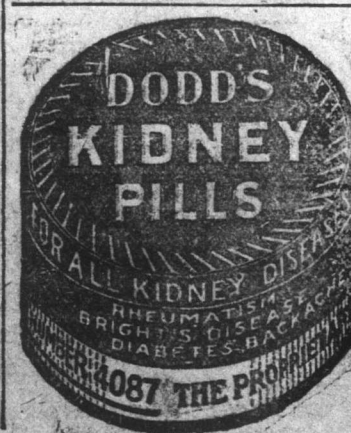
For their size, the ants are herculean in their strength; they will carry twice their own weight quite easily.

Except for their love for their eggs, larvae and pupae, and their queens, they are a savage, callous crowd. Sometimes they help each other, but very seldom; they are more likely to walk on the wounded than to succor them.

Some ants vary the monotony of life by having slaves. The red ant (Sanguine) is the robber ant in this country. They go out in an army and raid the nest of the meadow ant, or some other timid variety. They bite their way into the nest, seize the larvae and pupae in their mouths, and scurry home.

The slaves have to wait on their captors, and even carry them about in their mouths. They go out and collect food, and in case of war fight hard for their adopted home.

Evening slippers are of metal cloth, kid, or brocade.



### MUTT AND JEFF

### IT APPEARS TO BE A MUD-SLINGING CAMPAIGN THIS YEAR.

—By Bud Fisher

