

This 5-Ton Scale Is Easy To Buy—

You need not club with your neighbors to equip your farm with the scale you need—the CHATHAM Pitless Scale. **COMES READY FOR USE** You can afford to buy it yourself. It will save you more than its cost in one season. **YOU HAVE NO BOTHER** Up to five tons it will weigh accurately all you buy or sell. You can erect it ready to use in a morning.

**No Pit to Dig
No Extras to Buy**



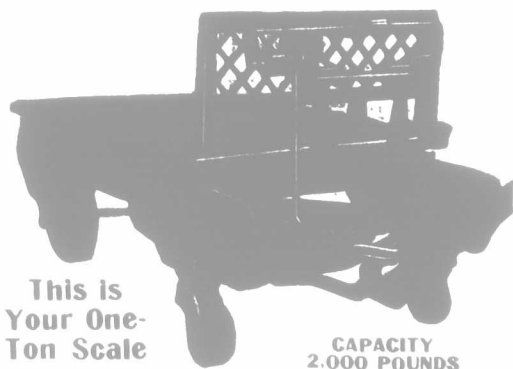
Your CHATHAM Pitless Scale will be YOUR Scale, that you can take with you when you move. You can always get for it what you paid for it. And you need no skilled help to set up the CHATHAM—it comes to you complete, with plain directions. Built wholly of heavy steel. Nothing to rust, decay or go wrong. Government guarantees its absolute accuracy. Tested before it leaves the factory. Warranted fully.

This is the Complete Scale

Bear in mind that you have no hard work to do in setting up a CHATHAM. It is all solid steel, stands on its own feet above ground—no pit to dig, no fussy preparation needed before you use it. Comes to you so you can be weighing on it in a few hours after you get it. No skilled mechanic necessary at all.

Special Compound Beam—No Extra Cost

This season we include our new Compound Beam with each CHATHAM Pitless Scale without adding a cent to the price of it. You can find no bigger bargain, yet the price is away down low. In sections where we have agents we offer special long-time credit terms to those who would rather try the Scale before they pay for it. Write us and ask for full details.



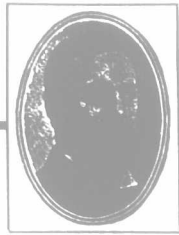
This is Your One-Ton Scale

CAPACITY 2,000 POUNDS

Handy to move about as a wheelbarrow, yet accurately weighs up to a full 2,000 pounds. Swivelled pole and front wheels let you turn it short through doorways and around corners. Strong and staunch, too, like all scales we build.

You'll Never Wear it Out

Main frame is one solid and very heavy casting. Levers are specially heavy and strong, so they won't spring under excessive strains. Bearings align themselves, because pivot pins wear long loop—tilt the scale and it will fall right. And...

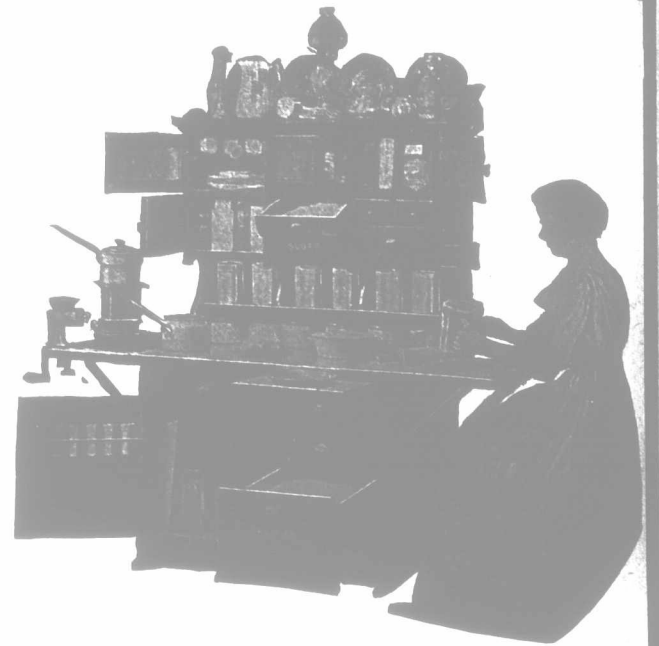


I personally vouch for every statement this advertisement makes, and I further guarantee that my Chatham Pitless Scale is the biggest scale value you can buy for money in this or any other country. Write me about it and I will see that this is proved to your complete satisfaction. Write now.

MANSON CAMPBELL
President

SAVES—MONEY— —TIME— —WORK— AND REALLY COSTS NOTHING

You can easily afford this handsome, practical kitchen necessity. For our special offer (please send for details of it) lets you pay for it out of what it actually saves in lessened grocery bills. You should ask us about it at once.



Whole table-top one heavy sheet

OF BRIGHT ALUMINUM

You cannot begin to know the CHATHAM by this picture. For the picture cannot show even one of its most pleasing and valuable features—the SOLID SHEET OF BRIGHTLY-POLISHED HEAVY ALUMINUM that forms the covering of the table-top and extension leaves. This ALUMINUM is extra-heavy weight, pure metal—LOOKS LIKE SILVER—LASTS LIKE STEEL—cannot rust—won't gather dust or dirt—easily cleaned—simply perfection! And this is the ONLY kitchen cabinet you can buy with an aluminum top—which ADDS FULLY FIVE DOLLARS TO ITS VALUE. Yet you pay NOTHING EXTRA for it!

You must see it to know it

You must see the Chatham Kitchen Cabinet to appreciate how handy, compact, sensible it is. Exterior of specially-selected black ash, hard as rock and beautifully polished. Panels of golden chestnut. Bake-board, drawers and flour-bin of snow-white basswood. With the CHATHAM everything you use in cooking is at your fingertips. You can get meals ready sitting down. Your flour-bin (metal lined—holds 75 pounds!) is right under your hand in easy reach. Sugar-bin (opened or closed by a touch) is just in front of you. Six air-tight canisters (free with every Chatham Cabinet) stand in the shelf-rack. Big, dust-tight drawers hold spoons, egg-beater, funnels, strainers, etc.; ample closets for kettles, pans, and the like.

Everything in its place Easily moved to sweep under

And you can tidy up as you go along when you have a CHATHAM. There is a place provided for all the things you now walk back and forth for, between pantry and table. The CHATHAM spares you all those countless steps. Cupboards for jams and tinned foods; three roomy drawers (besides the two large ones) for small packages. High top makes a fine shelf for dishes—enclosed on three sides, and a rod at the back as a plate rack. Fine French plate mirror in center door—fix your hair in a second if anyone comes. The CHATHAM is mounted on ball-bearing castors. You can readily move it when you are sweeping up. Yet it is most solidly built—nothing shaky nor wobbly about it. Whole thing is dust-tight, mouse-proof—a permanent, durable, satisfying kitchen help.

You should now investigate

Yet, with all these conveniences—features found in nothing else—the cost of a CHATHAM is probably less than you imagine. You should write us for the address of our agent nearest you. He can name you a price that will surprise—and he will gladly show you the Cabinet and point out its merits. Allow us to send you illustrated explanatory.

**FREE BOOK
JUST ADDRESS**



We use one of my Cabinets in my own home; and the women-folk say frankly that they simply could not get on without it. It certainly does cut kitchen-work square in half. And I know we build it so well it can safely be GUARANTEED to you.
Manson Campbell, President

The Manson Campbell Company, Limited, Chatham, Ontario.

Quebec Agents: Cote & Company, 6 St. Peter St., Montreal.

Makers of the famous Chatham Fanning Mill.