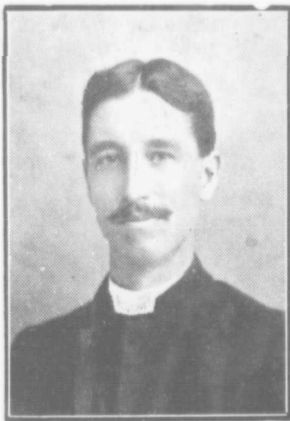


governor of Wycliffe College, and takes a prominent part in the discussion of the leading questions of the day.

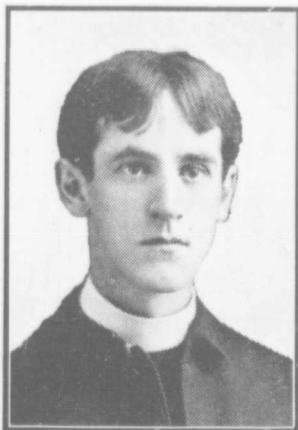
Mr. J. G. Snasdell followed him as superintendent and filled the position with much success for a great many years. His successors in office were Mr. J. H. Beck and the present superintendent, Mr. E. J. Carey.

The school to-day is in a very satisfactory condition considering the great drawback experienced in consequence of the death of two recent rectors, who were intensely interested in the welfare of the school and were beloved by the scholars.

The records of St. Luke's Church are not complete further back than 1866. Since that date the rector's wardens have been as follows:



THE LATE REV. S. H. MALLINSON.
A former Rector of St. Luke's.



THE REV. W. W. CRAIG, B.A.,
Present rector of St. Luke's Church.

Messrs. D. Smith, 1866-71; T. W. Herst, 1872-74; Thomas Lamb, 1875-79; Col. J. C. Sinton, 1880; Thomas Lamb, 1881; J. G. Snasdell, 1882; J. C. Sinton, 1883-84; J. G. Snasdell, 1885-87; T. W. Herst, 1888; G. H. Wray, 1889; J. S. Snasdell, 1890; J. G. Snasdell, 1891; T. E. Lamb, 1892-95; S. Stone, 1896; R. J. Parker, 1897-98; J. S. Snasdell, 1899; S. Stone, 1900-04. The people's wardens, from the same date, have been as under: Messrs. H. H. Geddes, 1866-67; Chas. Sheppard, 1868-69; S. Filer, 1870-71; J. C. Sinton, 1872-74; Thos. Binmore, 1875; J. W. Hill, 1876-80; W. D. Beardsell, 1881-82; Philip Finch, 1883; J. G. Snasdell, 1884; Wm.