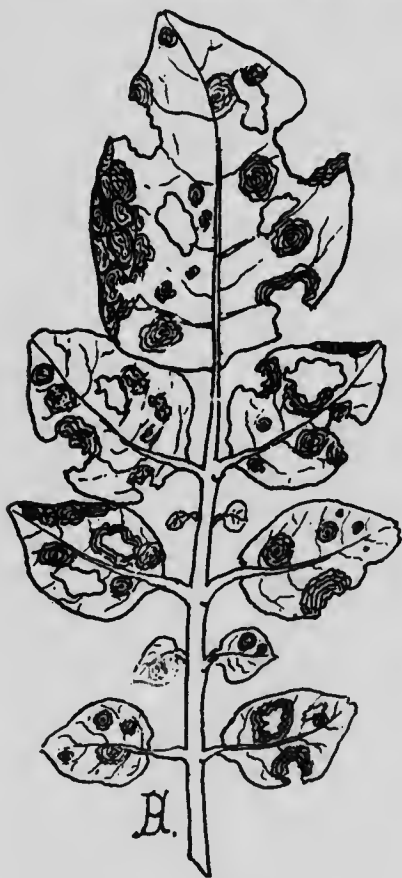
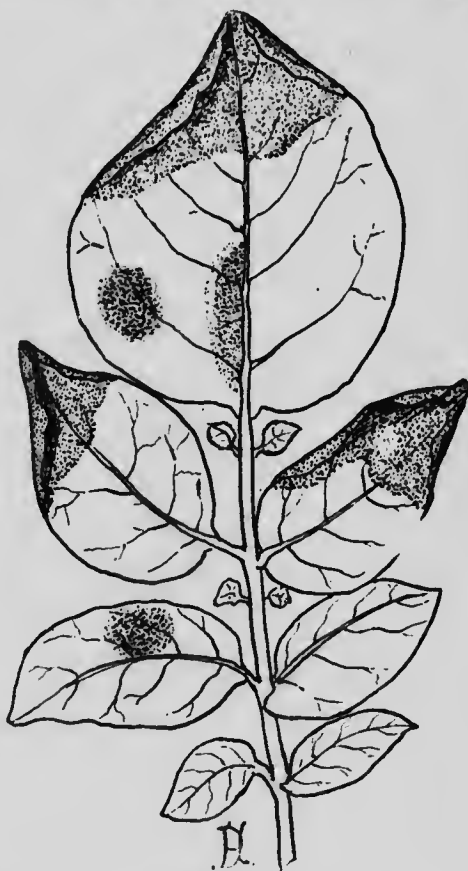


(Fungi).

LATE BLIGHT OR DOWNY MILDEW (*Phytophthora infestans*): This fungus disease is often very destructive in late summer to the potato crop. The margins of the leaves are usually the first portions to become diseased, probably because in periods of excessive moisture the edges are kept longer moist than the inner parts. There is a sharp line of demarcation between the affected and the unaffected areas; and in moist, warm



EARLY BLIGHT.



LATE BLIGHT.

weather, when the affected areas are enlarging rapidly, there is between the two areas a narrow whitish ring of mildew, which is producing spores in large numbers. The diseased leaves first turn brown, then darker, and finally black. Complete decay of the leaves soon occurs, accompanied by an offensive, yet characteristic, odor.

It is usually supposed that the fungus attacks the tubers as well as the stalks and leaves, producing a brown rot, but the mode of infection