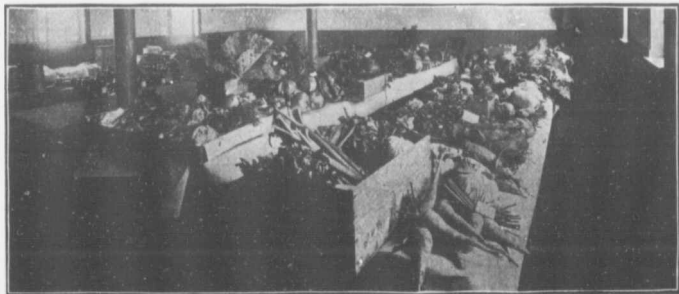


---

removed before anything can be grown or in fact before pasture for cattle can be obtained.

In the case of settlers with little or no means that is a very great advantage, and usually the timber buyers are prepared to make advances in the shape of provisions for themselves and horses and in other way, to be repaid when their timber is delivered the following season.

---



The Vegetables grown in the Clear Belt and Exhibited at the New Liskeard Fall Fair.

---