

FIGURE No. 215 W.—CHILD'S DRESS.

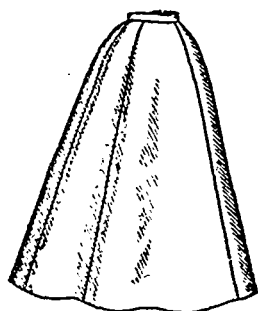
FIGURE No. 215 W.—This represents a Child's dress. The pattern, which is No. 9078 and costs 20 cents, is in 7 sizes for children from $\frac{3}{4}$ to 6 years of age, and is shown again on page 237.

Figured light-blue challis is here pictured in the dress, which is made fanciful by a lace frill that outlines a deep, pointed yoke-like piece applied on the smooth front, the frill extending down each side of the back to the lower edge of the body. The back is shirred at the top and



FIGURE No. 215 W.—This illustrates CHILD'S DRESS.—The pattern is No. 9078, price 20 cents.

bottom at each side of the closing and a frill of edging rises about the neck. Lace frills droop from ribbon-trimmed bands completing the full sleeves, which are gathered at the top and bot-



9109

tom Three rows of ribbon head the frill on the body and also the frill at the edge of the full gathered skirt, which is joined to the body.

The dress is very simple in construction and for it will be chosen all seasonable materials in tints that are becoming to children. A pretty trimming of insertion and edging will be added.

The hat is a fancy straw shape adorned with flowers and satin ribbon.



FIGURE No. 214 W.—This illustrates LITTLE GIRLS' REEFER JACKET.—The pattern is No. 9059, price 20 cents.

MISSES' SEVEN-GORED SKIRT, SHIRRED ON CORDS ACROSS THE FRONT AND SIDES AND HAVING A PLAIN SEVEN-GORED FOUNDATION SKIRT.

No. 9109.—This is an excellent style of skirt for transparent materials and is pictured in the accompanying engravings made of grass linen over pink percaline. The foundation skirt consists of seven gores and is gathered at the back and fits the figure smoothly at the front and sides. The skirt embraces seven wide gores and is gathered all round at the top, the fulness of the front-gore and side-gores being shirred on two cords a little below the belt, with novel effect, and falling in stylish and ample folds over the foundation skirt. The skirt measures about three yards and three-quarters



9106

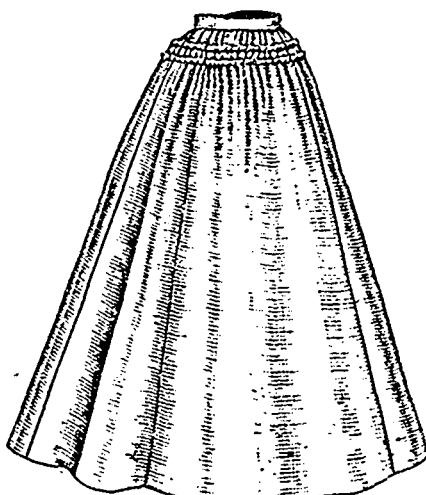
Front View.



9106

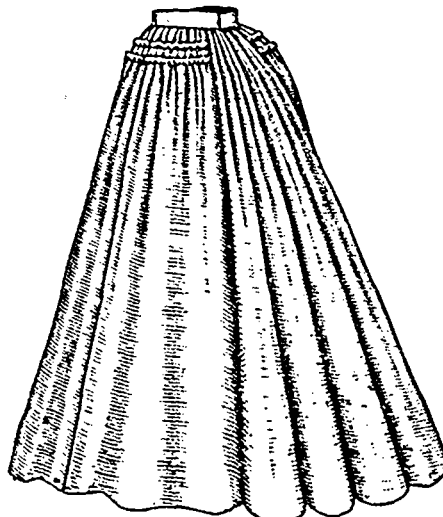
Back View.

LITTLE GIRLS' DRESS. (TO BE WORN WITH OR WITHOUT A GUIMPE.)



9109

Side-Front View.



9109

Side-Back View.

MISSES' SEVEN-GORED SKIRT, SHIRRED ON CORDS ACROSS THE FRONT AND SIDES AND HAVING A PLAIN SEVEN-GORED FOUNDATION SKIRT.

and the foundation skirt about three yards at the lower edge in the middle sizes.

with $1\frac{1}{2}$ yard of insertion $2\frac{1}{4}$ inches wide. Price of pattern, 20 cents.

Pattern No. 9109 is in 5 sizes for misses from 12 to 16 years of age. To make the skirt for a miss of 12 years, call for 5 yards of goods 22 inches wide. Price of pattern, 25 cents.

FIGURE No. 214 W.—LITTLE GIRLS' REEFER JACKET.

FIGURE No. 214 W.—This illustrates a Little Girls' jacket. The pattern, which is No. 9059 and costs 20 cts., is in 7 sizes for little girls from 2 to 8 years of age, and is shown again on page 236.

This jaunty little jacket is shown made of red serge, with a decoration of fancy black braid. Large fancy buttons are used for the double-breasted closing, which is made to the throat. The wide back has its center seam closed all the way and its side-back seams are terminated a little above the lower edge. Side-pockets inserted in the fronts are covered with square-cornered laps. The ends of a rolling collar flare at the throat, and the broad ends of a large sailor collar reach below the bust at each side of the closing. The one-ream sleeves are gathered at the top and are of fashionable size and shape.

Ribbon and flowers decorate the straw hat.

LITTLE GIRLS' DRESS (TO BE WORN WITH OR WITHOUT A GUIMPE.)

No. 9106.—A dainty little dress is here illustrated made of nainsook, with insertion for the shoulder straps and embroidered edging and

insertion for decoration. The upper part of the dress is a shallow, square yoke that has shoulder seams, and the full skirt is deeply hemmed at the bottom and gathered at the top across the front and back, where it is joined to the yoke. The neck is shaped in low, square outline and the dress may be worn with or without a guimpe. Straps of insertion bordered with edging, cross the shoulders and end in points below the corners of the yoke. Cap frills bordered with edging fall prettily over the tops of the short puff sleeves, which are gathered at the top and bottom and finished with bands edged with a frill of embroidered edging.

Pattern No. 9106 is in 7 sizes for little girls from 2 to 8 years of age. For a girl of 4 years, the dress needs $2\frac{3}{4}$ yards of nainsook 36 inches wide.