

FIG. 5.—*Nectarophora destructor*, apterous form. (Original.)

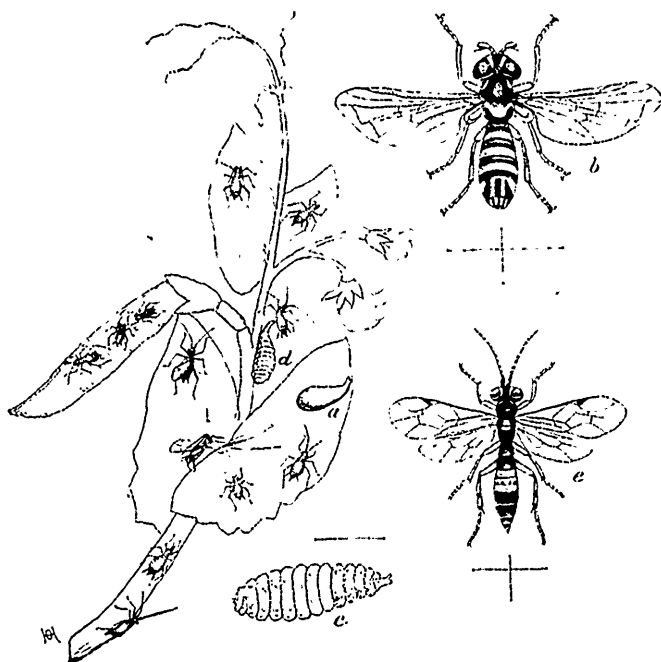


FIG. 6.—*Nectarophora destructor* and its principal enemy, *Allograpta obliqua*; a, pupa on leaf; b, adult; c, larva; d, larva feeding; e, *Bassus letorius* (female). Hair lines represent natural size. (Original.)