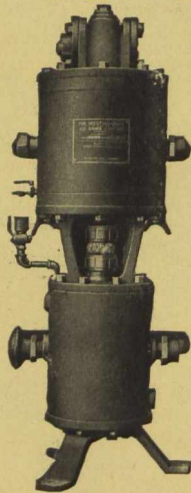


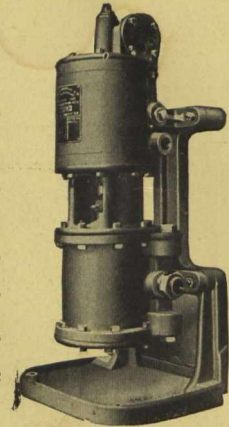
It is easy to have a simple and reliable air-compressing plant by installing —

Westinghouse Steam-Driven Compressors



Portable Compressor for High Delivery Air Pressure.

THEY occupy the smallest possible space, yet are designed with ample proportion of all wearing parts, insuring durability and low maintenance cost. Any substantial floor is a sufficient foundation for installing these compressors. They can be mounted direct on a boiler, or to any post, column or wall, or a stand is provided making it easy to move the compressor about. A sufficient guarantee of their absolute reliability is the fact that they are the accepted standard for railway air brake systems.



Compressor on Stand.

Canadian Westinghouse Company, Limited, Hamilton, Ontario

TORONTO MONTREAL OTTAWA HALIFAX FT. WILLIAM WINNIPEG CALGARY EDMONTON VANCOUVER
 Traders Bank Bldg. 52 Victoria Square Ahearn & Soper, Ltd. Telephone Bldg. Telfer Bldg. 158 Portage Ave. E. Grain Exchange Bldg. Dominion Bldg. Bank of Ottawa Bldg.

GENERAL SERVICE CARS

OTIS DUMP CARS

— PATENTED —

—PAMPHLET No. 16 TELLS ABOUT THEM—

Always Ready For Use

One Man Operation

Simplest, Safest and Best Door Operating Gear

Largest Unobstructed Door Opening

Dumps Clear of the Rail



THE STANDARD COAL CAR ON CANADA'S LEADING RAILROADS.

Built in Any Size or Capacity

All Steel, Wood or Composite

For Standard or Special Service

Thousands in Use

THE MOST PRACTICAL CAR FOR ALL BULK FREIGHT.
A DUMPING GONDOLA FOR ALL SERVICES.

DESIGNED AND BUILT BY

THE HART-OTIS CAR CO., LIMITED : MONTREAL

—SOLE PATENTEES FOR GENERAL SERVICE CARS FOR CANADA—