

You want a
**WHEEL
SCRAPER**
that will load easier,
dump easier and do a bigger day's work than
any other.

Then let us send you one of our machines. It does it.

Bechtels, Limited
Waterloo, Ontario

PORTLAND CEMENT



SEWER PIPES
FIRE BRICKS
FIRE CLAY



ALEX. BREMNER

50 Bleury Street

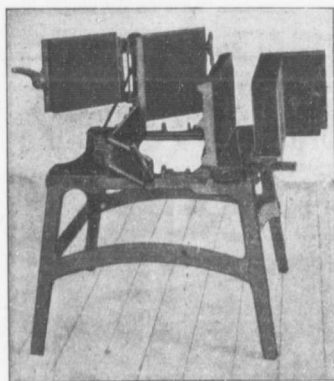
MONTREAL

FAMOUS TWO-PIECE FACE-DOWN BLOCK MACHINE

Winner of the first prize at the Michigan State Fair.

These are some of the reasons why you should buy this machine. Because we make a wall with continuous air space and non-continuous bond saving studding and lathing, the plaster being put right on the wall. There being no through connection in our wall, it is absolutely moisture proof. No metal ties are used, yet the wall is bound every foot and every nine inches. We make a stronger block with half the cement, than any other core block machine on the market, there being no core in the way we can tamp directly on the face, making the strongest block ever produced. The machine can be opened or closed in one second, doing very rapid work. The pallets used are wood costing from 6 to 8c. a piece and are very durable.

We can make blocks from 6" to 24" long and a wall from 4" to 16" thick.



We also give with our machine an angle mould which makes an angle from 30° to 90° inside or outside rock face or smooth. This mould cannot be furnished by any other firm. Our designs are latest and up-to-date. We make porch columns chimney blocks and any block made by any other machine. One man or more can operate the machine. It is strong and durable and so simple that a boy of 12 years can operate it. The superiority of this wall and machine over any other can be readily recognized.

One hundred dollars will be paid to any one giving information leading to conviction of any one infringing on patents of machine or wall. Agents wanted throughout Canada.

—Send for a catalogue showing cuts of wall, etc.—

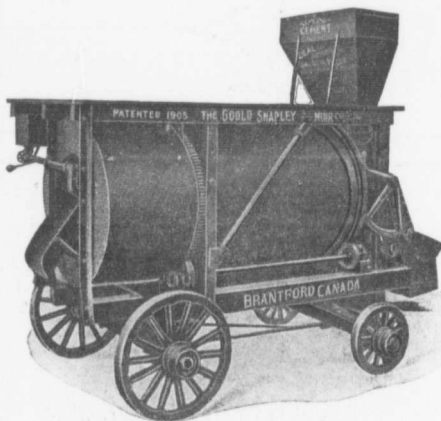
Famous Block Machine Co.

UNITED STATES OFFICE:
176 Jefferson Avenue,
DETROIT, MICH.

CANADIAN OFFICE:
21 Pitt Street West,
WINDSOR, ONT.

Ideal Concrete Mixer

Most Up-to-date Batch Mixer on the Market



Write For Catalogue

Goold, Shapley & Muir Co.

Limited

BRANTFORD

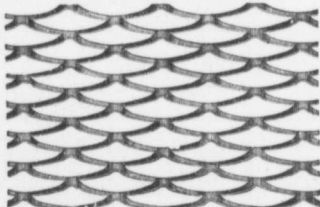
CANADA

"Galt Expanded Steel Lath"

Strong, Economical,
Rigid, Uniform,
Flat, Durable.

See this Lath before
buying elsewhere.

Once used, always
used. Samples and
full particulars mailed
upon request.



The Galt Art Metal Co., Limited
GALT, ONTARIO

OR DUNN BROS., WINNIPEG, MAN., AND REGINA, SASK.

REFUSE DESTRUCTORS

Complete Combustion
Perfect Sanitation
Latest Improvements

Structural Steel and Bridge Work

HEENAN & FROUDE, Limited

Manchester, England

RICHARD A. TAUNTON,

512-514 McINTYRE BLOCK, WINNIPEG.