

A POET'S PROEM.

It on the great world's wide and shifting sand I scrawl my meagre alphabet of song.

KING Alfonso's Government played a shrewd trick upon the Opposition in the royal marriage.

OUR CHESS COLUMN.

Solutions to Problems sent in by Correspondents will be duly acknowledged.

All communications intended for this department to be addressed Chess Editor, Office of CANADIAN ILLUSTRATED NEWS, Montreal.

TO CORRESPONDENTS.

J. W. S., Montreal.—Letter and contents received. Much obliged. Also, solution of Problem No. 190. Correct.

The following letter from our visitor of last winter, Mr. Bird, to a gentleman in Montreal, will be read by many with pleasure.

London, St. Mark's Crescent, Regent's Park, N. W. 19th January, 1878.

Dear Sir,—I have forwarded to Mr. Ascher and Mr. Shaw letters with copies of Messrs. Deans' circulars explaining the delay in issuing my little work on Chess openings.

I reached here, January the 11th, and have been most cordially welcomed, both amongst my business friends, and in the Chess circle.

The unbounded liberality I experienced from yourself and the Montreal Chess Club is most highly appreciated.

I am fully occupied with accounting work, but leave off early to-day, Saturday, for two or three hours' play with Boden, at 4 o'clock.

Rev. G. A. Macdonnell, Mr. Blackburne, Mr. Steinitz, Mr. Boden and Mr. Zukertort, are all in London, and well.

A dinner to celebrate my return is announced for next week. It is likely to be an interesting affair, as all grades of the Chess community will be represented.

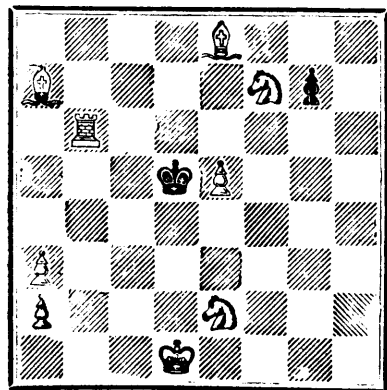
My most respectful and kindest regards to Dr. Howe and Principal Hicks. I send copy of Laurel and Water.

From the Chessplayers' Chronicle, Jan. 7, 1878. As the result of the Anderson Festival at Leipzig, it is now announced that a "General German Chess Association" is about to be formed.

M. Jules Grévy, the successor of M. Thiers in political life, has a great reputation as a Chessplayer, and in this game and shooting, he finds his chief recreation.

In Paris, (France), Mr. Thompson, an American, has inaugurated a series of most agreeable Chess reunions at his own house, which are to be continued weekly.

PROBLEM No. 161. By S. H. THOMAS.



WHITE White to play and mate in three moves.

CHESS IN ENGLAND. GAME 240TH.

The following fine game is one of two encounters between Messrs. Vyse and Macdonnell, in a recent tourney at the City of London Chess Club.

(From the Dramatic Times.) Remove Black's K B P

- WHITE (Mr. W. E. Vyse.) 1. P to K 4 2. P to Q 4 3. B to Q 3 4. P takes P (a) 5. B to Q 2 (b) 6. Kt to Q B 3 7. B to K 3 8. P to Q R 3 9. P to B 4 10. P to Q Kt 4 11. Kt to Kt 5 12. Kt to K B 3 13. Kt to Q B 3 14. Castles 15. B to Q 2 16. P to Kt 3 17. Q to K 2 18. K to R sq 19. Q to Kt 2 20. Kt to K 2 21. P to B 3 22. Kt to Kt 5 23. B takes B 24. Q to B 3 25. Q to Kt 2 26. K R to Q sq (d) 27. Q to R 3 28. Kt takes Q 29. R takes Kt 30. R takes Kt 31. R to Q 2 32. R takes B 33. R to K 3 34. Kt to B 2 35. Kt to Kt 4 36. Kt takes P (ch) 37. P takes P 38. K to Kt 2 39. R to Q 3 40. P to Q R 4 41. R to B 3 42. Kt takes R 43. P to R 4 44. P to R 5 45. Kt to Kt 4 (g) 46. Kt to B 6 47. Kt to K 8 (ch) 48. Kt takes P 49. K to B 4 50. P to Kt 6 (ch) 51. Kt to K 8 (ch) 52. P to Kt 7 (i) 53. P to R 6 54. K takes P 55. Kt to B 6 (ch) 56. P Queens.

NOTES.

- (a) This is now considered the strongest move here. (b) Much better than Kt to B 3, as it forces the Q into a cramped position. (c) A strong move. White must take this B, as, if he retreats his own B, then Black takes Kt with his Q, with a won game. (d) Certainly his best course; he cannot remove the attacked B on account of Kt to K 6, and he cannot take the Kt, for then Black wins thus— 26. — R takes R (ch) 27. R takes R R takes R (ch) 28. Kt to Kt sq R to B 7

SOLUTIONS.

- Solution of Problem No. 159. WHITE. 1. K to Q Kt 3 2. R to K B 6 3. P to Q B 4 mate. BLACK. 1. K moves 2. K moves. Solution of Problem for Young Players, No. 157. WHITE. 1. K to K Kt 6 2. P to K B 5 (ch) 3. B to K Kt 2 mate. BLACK. 1. Kt to Q B sq 2. K to K 4. PROBLEM FOR YOUNG PLAYERS NO. 158. WHITE. K at Q B 8 R at K B 3 K at Q B 6 Pawns at K B 6 and Q B 4. BLACK. K at Q R sq B at Q R 2 Pawns at K B 2 and B 4. White to play and mate in three moves.

\$10 to \$1000 invested in Wall St. Stocks makes fortunes every month. Book sent free explaining everything. Address BAXTER & CO., Bankers, 17 Wall St., N. Y.

New Work of Vital Interest. Post Free 12 Cents or 6d. stg. FROM J. WILLIAMS, P. M. 22, MARISCHAL STREET, ABERDEEN, SCOTLAND, NORTH BRITAIN.

A LONG AND HEALTHY LIFE. CONTENTS: 1.—Medical Advice to the Invalid. 2.—Approved Prescriptions for Various Ailments, including Exhaustion, Loss of Nerve Power and Debility. 3.—Phosphorus as a Remedy for Melancholia, Loss of Nerve Power, Depression, and Nervousness. 4.—The Cocoa Leaf—A Remedy for Health and Strength. 5.—Hints on Self-Treatment and Cure. 17-1 52-369

MORSON & SON'S PREPARATIONS OF PEPSINE FOR INDIGESTION. Highly recommended by the Medical Profession.

PEPSINE POWDER, in 1 oz. Bottles, 4s. per oz. PEPSINE WINE, at 3s. 5s., and 9s. per Bottle. PEPSINE LOZENGES, at 2s. 6d. and 4s. 6d. per Bottle. PEPSINE GLOBULES, at 2s. 3s. 6d., and 6s. 6d. per Bottle. SOLD BY ALL CHEMISTS AND THE MANUFACTURERS, T. MORSON & SON, SOUTHAMPTON ROW, RUSSELL SQUARE, LONDON.

TO LET.

One of those comfortable medium-sized STONE HOUSES, No. 39 Lorne Avenue. Rent low to a good tenant.

several rooms, suitable for WORKSHOPS or OFFICES, Corner of Craig and Bleury Streets.

Apply to G. B. BURLAND, Burland-Desbarats Lith. Co., 5 & 7 Bleury Street.

SHOP TO LET.

A nice SHOP to let. Heated by Steam, in the Building of the Burland-Desbarats Company.

Apply to G. B. BURLAND, Manager, 5 & 7 Bleury Street.

GOLD BONANZA.

How Fortunes Are Made! Many poor men on the Pacific coast are made rich every year by small investments in mines without risk. The HERALD, published at Calais, Maine, says, they have no doubt the shares that can now be had at One Dollar, will soon be worth over \$500.00 each.

Send at once for full particulars, as the shares are being rapidly taken. Address, Mess. Brown & Bro., Bankers, CALAIS, MAINE.

WE WILL mail one or one-half dozen of the most beautiful new Chromos, in French or color, ever seen for \$30. They are mounted in 8 x 10 black enamel and gold mats, oval opening, and I'll send anything now before the public. Satisfaction guaranteed. Two samples for 25 cents, or six for 50 cents. Send 10 cents for grand illustrated catalogue with chromo of Moonlight on the Rhine. W. H. HOPE, 26 Bleury Street, Montreal, Canada. Headquaters for Chromos, Engravings and Art works.

NOTICE TO THE PUBLIC.

CANADIAN MECHANICS' MAGAZINE AND PATENT OFFICE RECORD.

This VALUABLE MONTHLY MAGAZINE has been much improved during the past year, and now embodies within its pages the most Recent and Useful information published connected with Science and the different branches of Mechanical Trades, selected with particular care, for the information and instruction of Mechanics in Canada.

ILLUSTRATED FAMILY FRIEND, SUCH AS FLORAL CULTURE, NATURAL HISTORY, POPULAR GAMES AND AMUSEMENTS, LADIES' FANCY AND NEEDLE WORK, AND SHORT PLEASING STORIES.

SELECTED NEW MUSIC, DOMESTIC RECEIPTS, &c. The Canadian Mechanics' Magazine, with the addition of the Illustrated Family Friend

PATENT OFFICE RECORD, Contains 16 full pages of Superior Illustrations and about 125 diagrams of all the Patents issued each month in Canada; it is a work that merits the support of every Mechanic in the Dominion, whose motto should always be

"SUPPORT HOME INDUSTRY." Price, only \$2.00 per annum. BURLAND-DESBARATS LITH. CO., PROPRIETORS AND PUBLISHERS, 5 and 7 BLEURY STREET, MONTREAL. F. N. BOYER, Architect

THE COOK'S FRIEND BAKING POWDER

Has become a HOUSEHOLD WORD in the land, and is a HOUSEHOLD NECESSITY in every family where Economy and Health are studied. It is used for raising all kinds of Bread, Rolls, Pancakes, Griddle Cakes, &c., &c., and a small quantity used in Pie Crust, Puddings, or other Pastry, will save half the usual shortening, and make the food more digestible.

THE COOK'S FRIEND

SAVE TIME, IT SAVES TEMPER, IT SAVES MONEY. For sale by storekeepers throughout the Dominion and wholesale by the manufacturer. W. D. MCLAREN, UNION MILLS, 15-17-52-249 55 College Street.

British American BANK NOTE COMPANY, MONTREAL.

Incorporated by Letters Patent. Capital \$100,000.

General Engravers & Printers

Bank Notes, Bonds, Postage, Bill & Law Stamps, Revenue Stamps, Bills of Exchange, DRAFTS, DEPOSIT RECEIPTS, Promissory Notes, &c., &c., Executed in the Best Style of Steel Plate Engraving. Portraits a Specialty. G. B. BURLAND, President & Manager.

DYSPEPSIA, LIVER COMPLAINT, and all DISEASES OF THE BLOOD and SKIN radically cured by using NEPENTHE BITTERS. Ash for NE-PEN-THE BITTERS, take no other, and you will obtain immediate relief. 16-25-46-266

WANTED—Men in each State for the Detective Service and to report crime. Pay liberal. Inclose stamp, and address AMERICAN AND EUROPEAN SECRET SERVICE CO., Cincinnati, Ohio.

CHEAPEST AND BEST.



JOHN DOUGALL & SON, 218 and 220, St. James Street, Montreal. Electrotyping and Job Printing, Chromatic and Photo.