

THERE IS BUT ONE PORTLAND

Oregon, and it is best reached via Chicago and St. Paul over the through Sleeping Car Line of the Chicago, Milwaukee & St. Paul and Northern Pacific Railways. For further information apply to the nearest ticket agent or address, A. J. Taylor, Canadian Pass. Agent, 4 Palmer House Block, Toronto, Ont.

EAST LAKE
 MANUFACTURED BY
METALLIC ROOFING CO.
 TORONTO
 ILLUSTRATED CATALOGUE FREE
STEEL SHINGLES

STEAM USERS

Desiring the services of **COMPETENT ENGINEERS** of any class, can obtain sober, intelligent and reliable men, by applying to

**CANADIAN ASSOCIATION
 STATIONARY ENGINEERS.**

A. E. EDKINS, President, care Boiler Inspection & Insurance Co., Toronto.
 JAS. ROBERTSON, Secretary Montreal Branch, 1420 Mignonne Street, Montreal.

FIRSTBROOK BROS.

King St. East, - TORONTO.

MANUFACTURERS OF
**TOPPINS,
 SIDE-BLOCKS
 AND CROSS-ARMS.**
 WRITE FOR PARTICULARS.

NEW & 2ND HAND
MACHINERY
 ILLUSTRATED CATALOGUE FREE
 H. W. PETRIE
 TORONTO, CANADA

F. E. Dixon & Co.

MANUFACTURERS OF

LEATHER BELTING

70 KING STREET EAST, TORONTO.

HEADQUARTERS FOR

ELECTRIC LIGHT AND DYNAMO BELTING.

We have the following Leather Belts in use in the works of the Toronto Electric Light Co. :-

- One 36 inch belt 98 feet long.
- One 36 inch belt 100 feet long.
- One 36 inch belt 123 feet long.
- One 38 inch belt 100 feet long.
- One 24 inch belt 100 feet long.

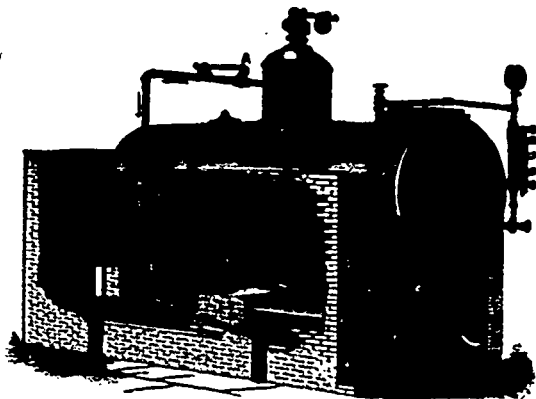
And over 1500 feet of 8 inch belting.

All of the above belts are **DOUBLE THICKNESS**. The 38 inch belt is the largest belt ever made in this Province.

We are prepared to furnish belts of any size, two or three ply, up to 48 inches wide. Every belt fully guaranteed.

SEND FOR DISCOUNTS.

Dixon's Belting Hand Book mailed free on application.



President, W. F. HALL,
 Napanee Paper Co.

LONDON, ENG.
 PHILADELPHIA, U.S.

THERMOLYTIC FUEL COMPANY
 NAPANEE, - CANADA.

MANUFACTURERS OF

THE "CORNELL-GOODE" DEVICE

FOR STEAM BOILERS AND FURNACES,
 giving more economical results than are obtained by natural draught or any other system of using fuels.

Increased steaming capacity of boilers. Economy in combustion of coal. Easy work for fireman. Simple in design. Easily applied to any boiler. Durable. Inexpensive.
 CORRESPONDENCE SOLICITED. SEND FOR CIRCULARS.

SPECIAL PULLEYS

ANY DESIGN OR SIZE

FOR ELECTRICAL PURPOSES

Our Pulley is now in use in MOST PROMINENT STATIONS throughout United States and Canada.

SEND FOR ESTIMATES.

DODGE WOOD SPLIT PULLEY CO.,

Office, 83 King Street West, TORONTO, ONT.