

Issued Each Week - Only One Dollar a Year

VOL. XXIX.

NUMBER 31.

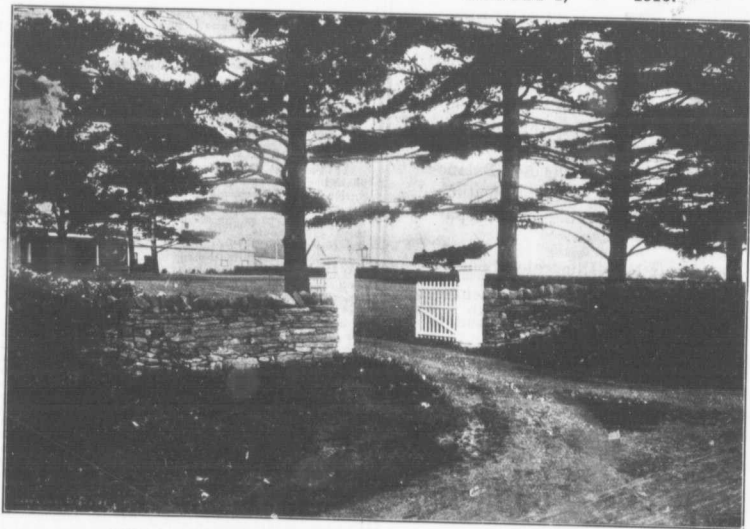
FARM AND DAIRY

RURAL HOME

PETERBORO, ONT.

AUGUST 4,

1910.



ONE OF THE FINE OLD FARM HOMES OF EASTERN ONTARIO

A distinctive home-like atmosphere surrounds the farm home illustrated, and which is the residence of G. D. Mode, a prominent young farmer in Glengarry Co., Ont. Mr. Mode, like many other farmers of to-day, finds it possible to conduct his farming operations and at the same time keep up a fine lawn and flower garden. The house, which is solid brick and was built 53 years ago, is equipped with all modern conveniences. No unsightly fences are near the house. Cedar hedges divide the lawn from the fields. A fuller description of this place is given on Page 11.

DEVOTED TO
BETTER FARMING AND
CANADIAN COUNTRY LIFE