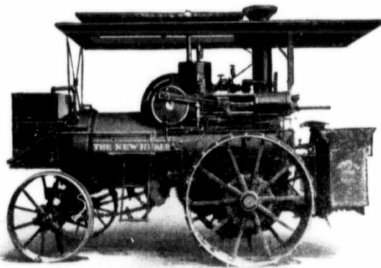
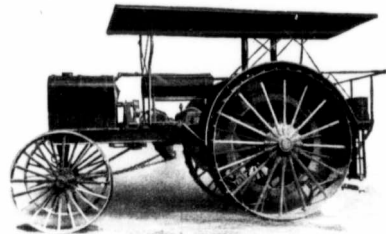


Your Choice of Four

in Huber Power



20 HORSE POWER STEAM ENGINE



30-60 GAS TRACTOR
(Four-cylinder—Extraordinary Power and Land Grip for Weight of Engine)

Which means that the small farmer or the ten-thousand acre grain grower can have the identical and the ideal outfit to suit his soil and acreage.

If you prefer Steam we can offer you a selection from five sizes of a type of engine that is second to none in any detail of material, design and construction built. From 16 to 30 H.P.—mounted on the Huber Return Flue Boiler, which burns coal, wood or saw. Greatest of all heat economists. Heat must pass twice through water the length of boiler before reaching the smoke-stack. Practically all of it is used to generate steam. Huber steam engines have great surplus over all ordinary power requirements.

Twenty-Forty Plowing Tractor

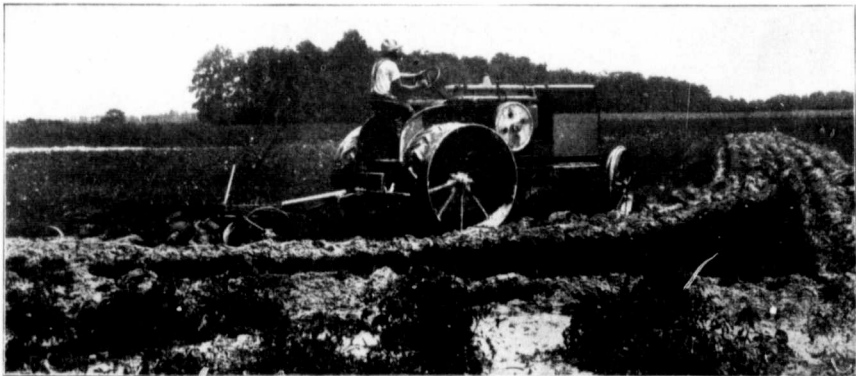
Two-cylinder opposed type—perfectly adapted to burn either kerosene or gasoline. This is one of the most satisfactory engines now in operation for the medium-sized farm. It is the greatest of all fuel economists, giving extraordinary power delivery for the small quantity of fuel consumed. The cost of operating compared with the actual work accomplished has proved conclusively that a Huber Tractor has nothing in front of it for service.

The biggest money ever earned in Canada will be received for 1915 grain crop by the farmer who puts every available acre he can plow under crop. Never in North American history was there such a chance for the grain grower. We can help you in a way that no one else can to make the very most of this golden opportunity.

**EVERY POSSIBLE CORNER UNDER CROP
LET THERE BE NO WASTE LAND IN 1915**

Here is the
Small (15-30) Huber
At Work in Heavy Clay

Adelbert Green & Son, Livestock, N.Y., say:
"We filled fourteen sties this fall, most of them sixteen by thirty and everywhere our 15-30 Huber Tractor was favorably commented upon. The Huber runs as smooth and silent as most steamers."
"We have a long gang plow, which the engine pulls with ease. Some of the land is so sticky and rather heavy clay, but this is heavy ground for our little 15 Huber. We can plow an acre per hour, and estimate the cost at about 35c. per acre for fuel and oil, plowing 9 inches deep in heavy soil. With horses the cost is nearly doubled and with the Huber, one can get the ground plowed when it is fit, and it doesn't get when not working. The Huber seems to travel on soft and mowed ground with the same ease that it does on hard ground."



Write us at once giving size of your Farm

THE HUBER MANUFACTURING COMPANY

Canadian Office: Arlington and Logan, WINNIPEG, MANITOBA
Home Office and Factory: MARION, OHIO, U.S.A.