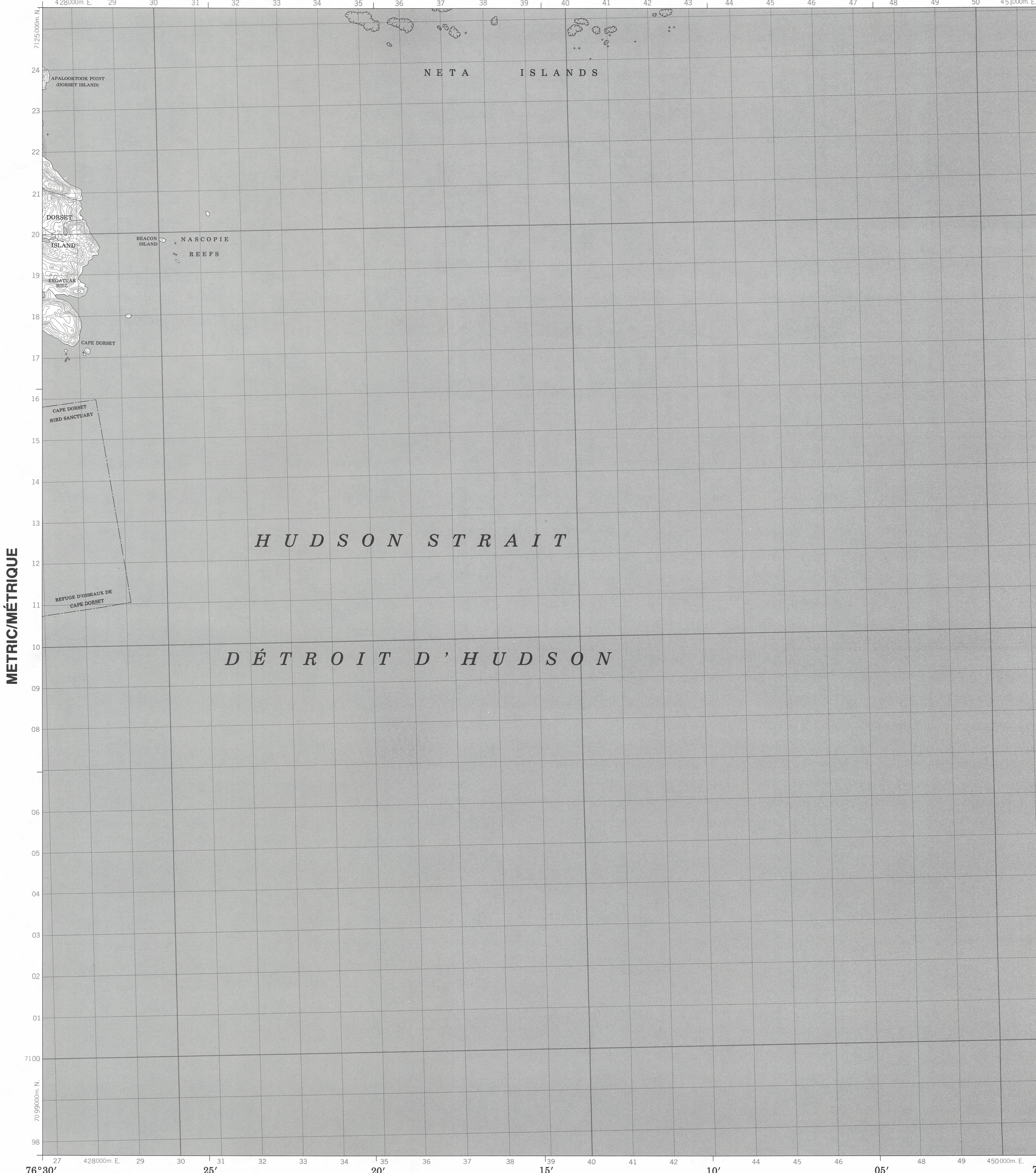


Military users, refer to this map as: Références de cette carte pour usage militaire.

SERIES A 701 SÉRIE MAP 36 C/1 CARTE EDITION 1 MCE ÉDITION

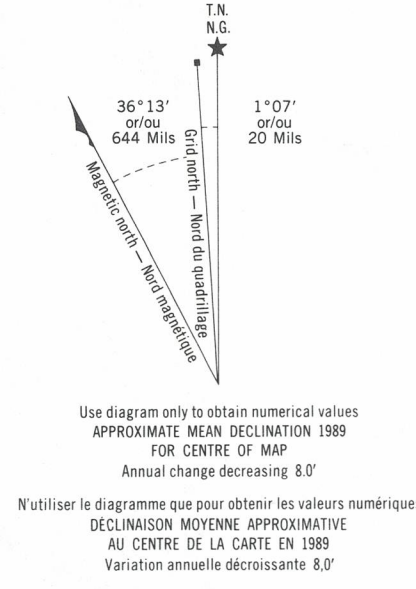
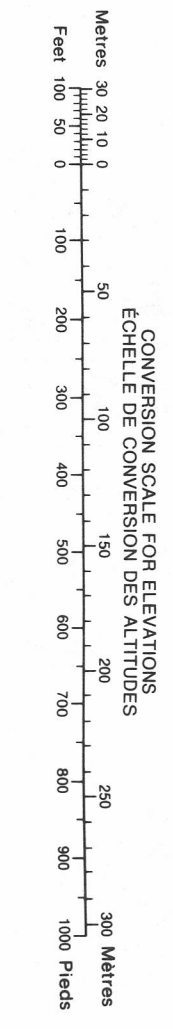
BEACON ISLAND 36 C/1 EDITION 1 ÉDITION



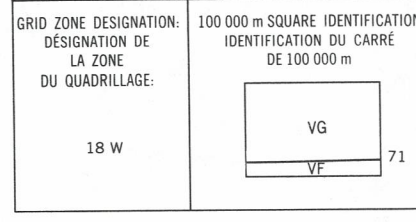
Legend - Légende table with symbols for roads, railways, water features, and boundaries.

METRIC/MÉTRIQUE

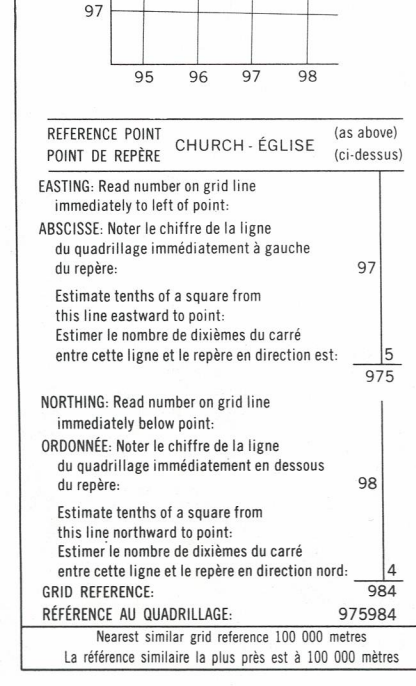
METRIC/MÉTRIQUE



ONE THOUSAND METRE UNIVERSAL TRANSVERSE MERCATOR GRID ZONE 18



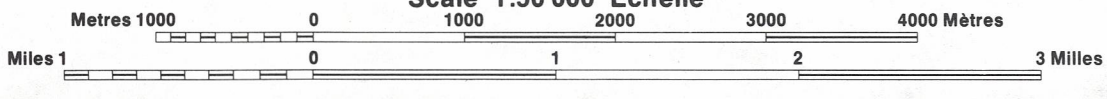
EXAMPLE OF METHOD USED TO OBTAIN A REFERENCE TO NEAREST 100 METRES



PRODUCED BY THE CANADA CENTRE FOR MAPPING... DEPARTMENT OF ENERGY, MINES AND RESOURCES.

ELEVATIONS IN METRES ABOVE MEAN SEA LEVEL... CONTOUR INTERVAL... 10 METRES

BEACON ISLAND DISTRICT OF FRANKLIN... NORTHWEST TERRITORIES TERRITOIRES DU NORD-OUEST



ALTITUDES IN METRES... ÉQUIDISTANCE DES COURBES... 10 MÈTRES

ÉTABLI PAR LE CENTRE CANADIEN DE CARTOGRAPHIE... MINISTÈRE DE L'ÉNERGIE, DES MINES ET DES RESSOURCES.

POUR TOUT RENSEIGNEMENT CONCERNANT LES RÉPÈRES... AUCUNE ZONE FORESTIÈRE SUR CETTE CARTE.

THE MAGNETIC COMPASS MAY BE ERRATIC IN THIS REGION... LA BOUSSOLE SERA PEUT-ÊTRE INSTABLE DANS CETTE RÉGION

BEACON ISLAND 36 C/1 EDITION 1 ÉDITION

