

YARD DECORATION.

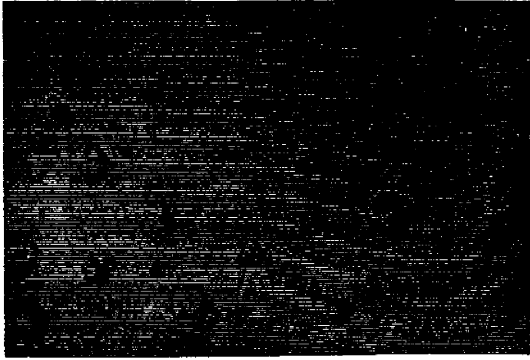


FIG. 1055.—THE COMMON OR NURSERY TYPE.

find more or less regular rows of shrubs or evergreens, dotting it over without the slightest purpose or aim in the way of making a beautiful whole. Prof. Bailey says that every yard should be a picture, and by way of contrast draws attention to Fig. 1056, "where the central idea is the residence with a warm open green-sward in front of it. The same trees and bushes which were scattered haphazard in Fig. 1055, are massed into a frame work to give effectiveness to the picture of home and comfort."

To quote Mr. Bailey still farther: The making of a good and spacious lawn, is the very first practical consideration in a landscape garden. This provided, the gardener conceives what is the dominant and central feature in the place, and then throws the entire premises into subordination with this feature. In home grounds this central feature is the house. To scatter trees and bushes over the area defeats the fundamental purpose of the place,—the purpose to make every part of the grounds lead up to the home and to accentuate its home likeness. Keep the centre of the place open. Plant the

borders. Avoid all disconnected, cheap, patchy, and curious effects.

It is not enough that the bushes be planted in masses. They must be kept in masses by letting them grow freely in a natural manner. The pruning knife is the most inveterate enemy of shrubbery.

Flowers appear to the best advantage when seen against a back ground of foliage, and they are then, also, an integ-

ral part of the picture.

The flower garden, as such, should be at the rear or the side of a place, the same as all other strictly personal appurtenances are; but flowers and bright leaves may be freely scattered along the borders and near the foliage masses.

What kinds of shrubs and flowers shall I plant? This is wholly a secondary and largely personal consideration. Be sure that the main plantings are made up of hardy and vigorous species, and have lots of them. Then get the things which you like. I like bull-thistles,

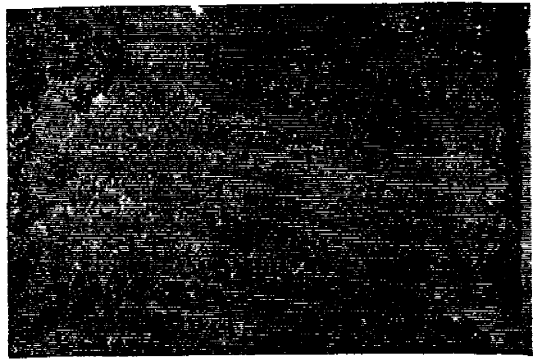


FIG. 1056.—THE PROPER OR PICTORIAL TYPE OF PLANTING.

lilacs, hollyhocks, burdocks, rhubarb, dogwoods, spireas, elders and such careless things. But others have better