

# BRISK BARGAIN BUYING At The Royal Stores

Hundreds of shoppers hurry to The Royal Stores every week, and secure big savings on everything they buy. The store has a friendly atmosphere—all its own—created by our determination, that every transaction shall be carried through in such a way as, either to make a new friend for the store, or, to strengthen a friendship already in existence.

## Note these Friday & Saturday Values A Sale of Ready-to-wear Hats You Will Like These Blouses

### Women's Velour Hats.

An assemblage of Ready to wear Velour Hats in many appealing styles. Trimmed with Merve Silk bands and fancy stitchings; assorted pretty colors. Reg. \$5.00 each for .. **\$4.20**

### Misses Black Velvet Hats.

Trimmed with colored Ribbon, Streamers, and fancy stitching. Regular \$2.75 each for .. **\$2.30**

### Suede Tams.

Colors of Saxe, Cornsour, Grey, Red, Purple, Jade and Brown; nicely embroidered, fringed tassels. Reg. \$1.85 each for .. **\$1.55**

### Tricoline Smocks.

Round neck; half sleeves; trimmed with Silk Embroidery, on front and hipper band. Reg. \$7.25 each for .. **\$7.80**

### Flannelette Shirtwaists.

Light grounds with striped effects; smart adjustable collar; buttoned cuff; sizes 13½ to 14½. Reg. \$1.75 each for .. **\$1.45**

### Women's Cotton Smocks.

With half sleeves, round and square necks; colors of Saxe, Champagne, Navy, Flame, Grey, Lemon, finished with Silk Girdle at waist. Reg. \$5.80 each for .. **\$4.75**

## Splendid Savings on Sewing Helps Odds and Ends Small-ware



**MENDING WOOL**—All shades. Special per card **5c**  
**DRESS FASTENERS**—All sizes; Black and White per doz. **4c**  
**SHEET PINS**—Assorted sizes. Special per book **6c**  
**SAFETY PINS**—Assorted sizes. Special per sheet **6c**  
**COMMON BLACK PINS**—Medium size. Special per sheet **5c**  
**TAPES**—Black and White; assorted widths. Special per yard **1c**  
**FUR COAT BUTTONS**—Large sizes. Reg. 30c each for .. **12c**  
**COAT BUCKLES**—Assorted sizes and styles. Reg. 12c each for .. **10c**  
**HOOKS AND EARS**—Black and White; all sizes. Special per card **5c**  
**MENDING WOOL**—Black only. Special per ball **11c**

## Stationery

**MATHEMATICAL SETS**—Reg. 60c. set for 49c.  
**TWISTED CANDLES**—4 to box. Reg. 40c. box for 32c.  
**CANDLE/SHADE HOLDERS**—Reg. 30c. set for 25c.  
**ROYAL SCRIBBLERS**—Special each .. **8c**  
**WHITE PAPER NAPKINS**—20 in package. Special per package .. **5c**  
**CONFETTI**—Special per tube .. **7c**  
**SLATES**—Special each .. **16c**  
**TAKANE TOILET PAPER**—Special per roll .. **9c**  
**MERION LAWN STATIONERY**—Reg. 23c. box for 19c.  
**DANEHURST PARCHMENT TABLET**—Small size. Reg. 20c. for .. **16c**

## Good Values in GLOVES

**WOMEN'S BROWN KID GLOVES**—Wool lined; 3 dome fasteners; all sizes. Reg. \$4.50. **\$3.85**  
**MISSIE'S WOOL CAULDRONS**—20 in package. Grey, White and assorted colors; striped. Reg. \$1.00 pair for .. **90c**  
**WOMEN'S KID DRIVING GLOVES**—Heavy Cape Tan Kid; in all sizes; 2 Dome fasteners. Reg. \$2.30 pair for .. **\$2.05**  
**WOMEN'S UNLINED KID GLOVES**—In shades of Fawn, Tan, Beaver and Black. Reg. \$1.85 pair for .. **\$1.65**  
**MISSIE'S SUEDIE GLOVES**—In shades of Slate and Grey; sizes 7½ to 9; Wool lined. Reg. \$5.00 pair for .. **\$4.48**  
**MEN'S FABRIC GLOVES**—Sizes 7½ and 8½; unlined perfect fitting. Reg. \$1.10 pair for .. **98c**

## Values in Footwear

**MISSIE'S L A C E D BOOTS**—Sizes 12 to 2; Black Box Calf, with round toe and extension soles; Ideal Boots for Fall wear. Regular \$3.50 pair. Sale Price **\$3.15**  
**CHILDREN'S STRAP SHOES**—Black Gun Metal, round toe; Buckle fronts; sizes 8½ to 11. Reg. \$2.35 pair for .. **\$2.12**  
**CHILD'S "MARY JANE" SHOES**—Made of Black Vici Kid; popular Foot form Soles; wedge heel; sizes 4 to 8. Regular \$2.35 pair for .. **\$2.12**  
**MEN'S LEATHER SLIPPERS**—Strong, soft finished Black Leather; cosy styles; real Leather Soles and heels; sizes 6 to 11. Reg. 2.30 pair **\$2.07**  
**MEN'S RUBBERS**—High grade Black Rubbers, high and low styles; strong, durable make; all sizes. Special per pair .. **\$1.45**

## Ermine Furs

Lined with White Satin; well shaped Stoles or Necklets; cross over style; a limited number only. Reg. 4.55 each for **\$3.90**

## Women's Serge Dresses

**BLACK SERGE DRESSES.**  
In large sizes, Coat Frock style; nicely finished with adjustable collar; embroidered, Braided and buttoned fronts. Reg. \$15.00. **\$17.50** each for ..



## Exquisite Handbags At Reduced Prices

### Dainty Beaded Handbags.

Strong, Celluloid frames; Silk lined, pocket and mirror; extra special values. Reg. \$7.25 each for .. **\$6.30**

### Suede Hand Bags.

In shades of Grey and Navy, fitted with fringed tassels; Brass frames, strong fasteners; strap handles. Reg. \$3.50 each for .. **\$3.15**

**JET NECKLETS**—27 inches long; Jet Beads; very stylish; assorted designs. Reg. \$1.80 each for .. **\$1.50**  
**SMART GIRDLES**—Fancy Chain designs in color contrasts of Amber and Black, Brown and White; also Leather metal chains in various colorings. Reg. \$1.00 each for .. **85c**  
**CNO HAIR NETS**—Pure Silk, Cap shape; invisible net; practically unbreakable; colors, mid, dark Brown; also Black and Grey; 6 in a package. Reg. 50c. package for .. **32c**  
**FEATHER HAT BANDS**—25 inches long in these colors, Royal, Taupe, Brown, Grey and Black; suitable for Winter Hats. Reg. \$3.25 each for .. **\$2.75**

**WOMEN'S WATERPROOF COATS**—Made of high-grade Rubberized Tweeds; 50 inches in length; double breasted, with pockets; neat belt attached. Reg. \$24.00 each for .. **\$22.20**  
**CLOSE FITTING VEILS**—Strong Silk mesh in color of Brown, Mole, Pink, Navy and Saxe. Reg. 45c. ea. for .. **38c**  
**WOMEN'S SWEATER COATS**—Tuxedo collar, girle and pockets; colors of Beaver, Saxe, Rose and Poon Blue. Reg. \$5.00 each for .. **\$4.55**  
**MOTOR WRAPS**—Size 21 inch x 74; all Wool; colors of Torquay, Emerald and Camel; with belt of contrasting colors. Regular \$7.75 each for .. **\$4.85**  
**INFANTS' WOOL POLKAS**—White with collar and edges worked in Blue and Pink, tied with ribbon bows. Reg. \$1.70 each for .. **\$1.45**

## SailorDresses for Girls

Navy Serge of fine quality, with sailor collar trimmed with White military braid; Cream Serge fronts with embroidered anchors; long sleeves, killed skirts, to fit girls of 7 and 8 years. Reg. \$10.00 each for .. **\$8.50**  
**CHILDREN'S SLIP-ON SWEATERS**—V shaped neck with collars of contrasting colors; shades of Rose, Saxe, Beaver and Jade. Regular \$3.75 each for .. **\$3.25**  
**CHILDREN'S DRESSING GOWNS**—Made of warm Eiderdown in colors of Green, Red and Blue; Sailor collar and long sleeves; trimmed on sleeves and neck with red cord and red satin piping; sizes 8 to 14 inch. Reg. \$4.75 each for .. **\$2.50**



## The Man's Store

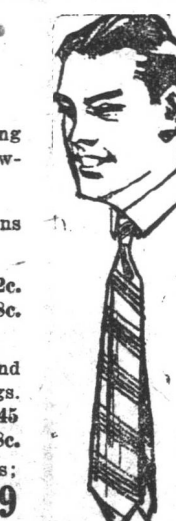
All sections of the Man's Store teem with goods combining utility with just that touch of style which men like; the following are typical examples:

**MEN'S BLACK SOCKS**—Heavy Black ribbed Wool Hose; soft finish, spliced feet. Reg. 75c. pair for .. **58c**  
**MEN'S HEATHER SOCKS**—Heavy ribbed; warm Socks for Winter wear; all sizes. Reg. \$1.80 pair for .. **85c**  
**MEN'S CASHMERE SOCKS**—Plain wool Cashmere Hose; Seamless feet; assorted sizes and colors. Reg. 90c. pair for .. **81c**

**MEN'S PULLOVER JERSEYS**—All Wool Jerseys in colors of Grey, Brown and Navy; medium weight sizes 36 to 42 inches. Reg. \$2.00 each for .. **\$1.85**  
**MEN'S SWEATER COATS**—Of fine soft Wool; warm, comfortable Sweaters; in colors of Light and Dark Brown, Grey, Maroon and Navy; shawl collar and pockets; sizes 38 to 42 inch. **\$3.20**  
**MEN'S PYJAMAS**—Made of heavy Flannelette; soft fleecy finish; light grounds with colored stripes; trimmed with military collar; silk frogs and pearl buttons; sizes 34 to 42 inch. Reg. \$3.00 suit for .. **\$3.00**  
**MEN'S COMBINATIONS**—Stanfield's make; long sleeves, ankle length legs; medium weight; sizes 34 to 42 inch. Reg. \$3.75 suit for .. **\$3.52**

**MEN'S SILK NECKWEAR**—Smart patterns in strong non-stretchable Ties. Reg. 25c. each for .. **22c**  
Reg. 55c. each for .. **48c**  
**WOOL MUFFLERS**—Extra long; warm and comfortable; in all the newest colorings. Reg. \$1.60 each for .. **\$1.45**  
Reg. \$1.10 each for .. **98c**  
Another line of Mufflers in self colors; full sizes; fringed ends. Reg. \$1.79. **\$1.95** each for ..

**MEN'S PERCALE SHIRTS**—White grounds with fancy colored stripes; sizes 14 to 16½; starched neck bands; soft double cuffs; coat shape. Reg. \$1.20 each for .. **\$1.12**  
**WORKING SHIRTS**—Blue Cotton; double stitched seams; patch collar and pockets; sizes 14 to 16½; extra good quality. Reg. \$1.00 each for .. **89c**  
**TWEED CAPS**—Men's heavy Tweed Caps in assorted colors; each fitted with inside Wool bands; all sizes. Reg. \$1.55 each for .. **\$1.65**  
**BOYS' TWEED CAPS**—Light and Dark colored Tweeds; each fitted with inside fur bands; all sizes. **72c**  
Reg. 80c. each for ..



## Household Needs

**WHITE TURKISH TOWELS**—Red striped patterns and fringed; medium sizes. Reg. 60c. each for .. **54c**  
**MANTLE DRAPERY**—7 inches wide; made of fine quality Tapestry; in assorted designs in Red and Green. Regular 28c. yard for .. **24c**  
**WHITE BEDSPREADS**—With pretty floral embossed designs; hemmed ready for use; size 2 x 2½ yards. Reg. \$5.00 each for .. **\$4.50**  
**TAPESTRY TABLE COVERS**—In Red and Green designs, size 2 x 2½ yards; fringed all round; best Brussels make. Reg. \$3.50 each for .. **\$2.75**  
**FINE NET CERTAINS**—With dainty Battenburg Lace designs. 3 yards long. Reg. \$7.20 pair for .. **\$6.25**  
2½ yards long. Reg. \$7.15 pair for .. **\$6.75**  
2½ yards long. Reg. \$8.50 pair for .. **\$7.56**  
2½ yards long. Reg. \$8.75 pair for .. **\$7.85**  
**BLAY TOWELS**—Colored stripes; fringed ends; small sizes. Regular 20c. each for .. **17c**  
**EIDERDOWN FOR DRESSING JACKETS**—27 inches wide; extra heavy quality; colors of Sky, Fawn, Grey, Red, Brown, Henna, Black and Green. Reg. 80c. yard for .. **74c**  
**TURKISH TOWELLING**—15 inches wide; Blay with colored stripes; heavy quality. Reg. 80c. yard for .. **77c**  
**CRASH CUP TOWELLING**—18 inches wide; good strong quality. Reg. 38c. yard for .. **34c**  
**STAIR DRUGGETT**—15 inches wide; 3 different designs in good colors. Reg. 30c. yard for .. **27c**  
**STAIR CARPET**—22½ inches wide; handsome designs in Green and Red with fancy borders. Reg. \$2.20 yard for .. **\$1.95**

## Three Specials in Hosiery

**Heavier Hose for Winter Wear.**  
**WOMEN'S HEAVY RIBBED CASHMERE HOSE**—In Black only; all sizes; extra special values. Regular \$2.00 pair for .. **1.90c**  
Regular \$1.60 pair for .. **1.35c**  
Another lot of ribbed Heather Hose; two Steeple brand. Reg. \$3.50 pair for .. **\$1.98**  
**WOMEN'S PLAIN CASHMERE HOSE**—In colors of Fawn, Grey, Brown & Black; seamless soles and heels; elastic tops; soft finish; sizes 9 and 9½ only. Reg. \$1.20 pair for .. **\$1.05**  
**WOMEN'S BLACK CASHMERE HOSE**—Full fashioned leg, spliced feet garter tops; sizes 9 to 10. Reg. \$1.55 pair for .. **\$1.39**  
**MISSIE'S CASHMERE HOSE**—2-1 and 4-1 ribs; all Wool guaranteed fast Black; spliced feet. Size 5 Regular 68c. pair for .. **61c**  
Size 6 Regular 70c. pair for .. **63c**  
**CHILDREN'S WORSTED HOSE**—"Two Steeple" brand; heavy weight; 4-1 ribs; black only. Size 2 Regular 80c. pair for .. **72c**  
Size 3 Regular 85c. pair for .. **78c**  
Size 4 Regular 95c. pair for .. **87c**

## Silk and Wool Dress Fabrics

**VELOUR COATINGS**—56 inches wide; in Fawn, Grey, Brown and Blue. Special per yard **\$5.00**  
**HEAVY REVERSIBLE COATINGS**—56 inches wide; will make splendid Coats for Boys; besides heavy Coats for Misses and Women. \$5.50 values. Selling for yard .. **\$3.00**  
**BLANKET COATING**—56 inches wide; mixtures of Brown, Green, Red, Taupe, Reseda. Special per yard .. **\$2.00**  
**BLACK REALETES**—48 inches wide; Special value. Reg. \$5.00 yard; black only. **\$5.40**  
**WHITE REALETES**—48 inches wide. Reg. \$4.50 yard for .. **\$4.05**  
**IVORY PALETTE SILK**—For Blouses, Evening Dresses and Wedding Dresses; 38 inches wide. Special per yard .. **\$3.25**  
**SHANTUNG SILK**—34 inches wide; Natural color; soft finish. Reg. \$2.00 yard for .. **\$1.65**

## Curtain Velours

48 inches wide; in Crimson, Golden Brown, V. Rose and Green. Reg. \$3.75 yard **\$3.25** for ..

## Women's Missionary Society.

### ANNUAL CONVENTION.

The annual convention of the Women's Missionary Society of St. John's District opened its session yesterday afternoon at 3 p.m. Mrs. C. H. Hys changes the District Supt. in the chair. After singing the Convention Hymn, prayer, and roll call—to which quite a number of delegates responded—the business of the evening commenced. Mrs. (Rev.) Joyce of Wesley Church in a short, concise, and business like way gave the address of welcome, and the response was by Miss Hull of Bay Roberts. A duet entitled, "Alone" was very sweetly rendered by Mrs. A. Goble and Mrs. (Rev.) Joyce. Mrs. A. Parkins of Cochrane St. then followed with a very fine paper on the "Duties of a Delegate." She told us of her address of welcome, and the response was by Miss Hull of Bay Roberts. A duet entitled, "Alone" was very sweetly rendered by Mrs. A. Goble and Mrs. (Rev.) Joyce. Mrs. A. Parkins of Cochrane St. then followed with a very fine paper on the "Duties of a Delegate." She told us of her address of welcome, and the response was by Miss Hull of Bay Roberts. A duet entitled, "Alone" was very sweetly rendered by Mrs. A. Goble and Mrs. (Rev.) Joyce.

The Financial Report was given by Miss Fenwick, the District Secy, showing that the interest in this great work was by no means waning, but rather some forward, and the reports from the different auxiliaries, which followed, also showed an increase in members and money in more than two or three auxiliaries. Mrs. Lindsay, Pres. of the Nfld. Branch of the W.M.S. then gave some echoes of the W.M.S. Board of Managers, which meets annually in Toronto, and of which she is a member. She said that she could not tell us all, because it could not be told and very humorously said, it was like what the old dorkie man said, in trying to describe something that he appreciated very much, that it was "like" the plain the unexplainable, to explore the unexplainable to unscrutinize the unscrutinizable. Mrs. Jos. Peters the Cor. Secy. of the Nfld. Branch, and a member of the Board followed, giving us some of the new ideas that were put forward by the Board for the coming year. "Man shall not live by bread alone" nevertheless we cannot do without it even if we so desired, and the good ladies of Wesley Church, with their plentiful tables of good things provided, showed that they were believers in satisfying the natural appetites of the inner man. Everybody was satisfied.

### EVENING SESSION.

The evening meeting opened, a large audience present, Miss G. Parsons, the Branch Secretary of Bands and Circles presiding. It was to be the young peoples meeting, and it was a good one, as the following will show: Miss Edna Parsons, Assistant Band and Circle Secretary led in prayer, and read the Scripture. A very solemn and lovely exercise entitled "I Thine Weary," from George St. Band was then given. Reports from Cochrane St., Gower St., and Wesley Bands and also from the Circles of Cochrane and Gower, George and Wesley and the College showing that the work was continuing and being blessed. Exercises were very beautifully performed by Wesley and Gower St. Bands and a chorus by nine little girls from the Orphanage. Recitations were given by Marjorie McKie, Cochrane St., and from Miss Estelle Barnes of George St. Of the latter special reference cannot be withheld. She recited "Kapiolani" (John Oxenham) in a very eloquent and dramatic manner and kept the large audience spell-bound while she was reciting. Duets were also faultlessly rendered by the Misses Pottles D. Spaulding, Moore D. Davis, Bishop D. Moore, Mew's and Bowden, and a solo entitled the "Silent Voice" by Miss Jean Taylor. Miss Ada Horwood gave us the paper of the evening entitled "Our Aims." She said the aims of the Society were the same as our Lord's, as high as God and broad as His universe. Mrs. Lindsay in a sweet and persuasive manner spoke for a short time of the great possibility of girlhood and recited at the close of her remarks the poem entitled "Thank God For the Girls." Mrs. Peters followed and spoke of the "Palm Branch," the juvenile paper edited by the W.M.S. showing its great value in the educational line, and that it is to us as a Society. Space and time forbid me to tell all the details, but it was good to be there and it was the opinion of one and all that the services of the day were a decided success. Services continue this afternoon and evening. M.C.H.

### Samples O.K.

He was a typical farmer. His first visit to a city restaurant, however, had taken away none of the appetite he had at home, where everything was placed in large dishes on the centre of the table and each one helped himself. The waiter had piled the food around the plate in the customary little dishes, which the farmer emptied in turn. Settling back in his chair, he hailed the passing waiter. "Hey, there, young man! Your samples are all right. Bring on the rest of the stuff."

### Artificial Eyelashes

#### ADORN PARISIAN WOMEN.

A superb set of silky eyelashes, secure for all time and impervious to loss through laughter or tears, may be had in Paris for a price, or rather two prices, the cost in francs charged for the operation and the pain which this same operation entails. There are Parisian women who gladly pay both. The lashes are sewn into the edges of the lids by a soft surgeon, and take root there after about twenty days. Seen close at hand, they show no scar or rim around the lid to betray the surgeon's touches.

**Gramophones Half Price.**  
Strong guaranteed works, same as in \$35 to \$45 machines. Will play all size and make Records. Regular retail price \$15, now only \$7.50 each, with two records and 200 needles free. J. M. RYAN, Supply Company, 227 Theatrical Bldg. Sept. 15, 1922.

The Royal Stores Ltd.