

As Usual.

1932 are already in, and we are prepared to show our customers a larger range and better values than ever before.

Our Dress Goods and Mantle Cloths are simply marvels of beauty and cheapness, and in Dress Linings and Trimmings we are below market values, an advantage obtained by buying in very large quantities for spot.

We have given special attention, and with gratifying success, to the processing of Men's, Ladies' and Children's underwear. Don't fail to see them; it means to you money saved.

In Boots & Shoes we are keeping our usual large stock well assorted, with a few special lines, or Snaps, added.

We are now keeping a large range of Hand-painted Window Shades (40 different designs) complete, with spring rollers; also Lace Curtains, Curtain Poles, Fancy Pole Ends and Fixtures, and all greatly reduced in price.

We make our Gent's furnishing department a speciality, and can give a better class where for the same money. And why? Because having a large trade in these lines we give special attention to the buying, dealing only with manufacturers, and getting closest cash prices.

Come and see us. Give us an opportunity to serve you, and you will realize the above statements as facts.

CENTRAL BLOCK ATHENS H. H. ARNOLD

Good Value POLITE ATTENTION Fair Dealing

The family who spend their money right will succeed. The family who spend their money wrong can not. When you want Groceries and Provisions go to the store and get our prices and see our goods. We claim to give you more value for your dollar than you can get elsewhere.

We started business to sell goods, not to give them away. We cannot live without a little profit, but we cut that profit down to the lowest point. We prefer 5 per cent. profit on ten sales before 40 per cent. profit on one.

Best granulated sugar 20 lbs. for \$1.00. Bright yellow sugar 25 lbs. for 1.00. Best Valencia Raisins, 5 lbs. for .25.

Joseph Thompson.

D. W. DOWNEY

THE ONE PRICE BARGAIN SHOE HOUSE

As Xmas approaches we are all at work trying to find a suitable present for our friends that will not cost too much and be appreciated.

Gentlemen's Velvet, Plush, Corduroy, and Fine Leather Slippers in Harvard, Opera, and Revere Styles.

Ladies' Misses and Children's new patented Workable Oversockings. They fit better and wear longer than any other stockings in the market.

German Foot Slippers in all sizes, from infants to the largest size in men's. We invite you to visit us and select your Xmas presents from our large and magnificent stock.

D. W. DOWNEY

FLINT'S NEW BLOCK BROCKVILLE.

GOING OUT

Do not make any mistake. We are not going out of business, or going out of present premises. No, but what we are going out of is

Dress Goods, Mantles, Etc.

Just as soon as possible, we are going to devote our whole time and store room exclusively to

Gents' Furnishings and Boots & Shoes

Simply these and nothing more.

CONSEQUENTLY

All goods other than are included in these lines will be cleared for SPOT CASH at

LOW DOWN FIGURES

For days we have been busy marking goods down for this big reduction sale, and will be ready for the rush on Friday next. This is not simply to reduce stock; it is to transfer every article and yard of goods to happy customers.

We have prices at a point where the goods must move, and in the matter of bargains it is simply a question of first come first served.

Our stock is large—it is complete—and to clear it out by retail is a big job, but it is all going to pass over the counters in lots to suit customers, and buyers will get the benefit.

READ THESE PRICES:

Cottons worth 66 for 40c. Dress Goods, single fold worth 15c. for 10c.

Double-fold Tweed Dress Goods worth 1.50 for \$1.00. Mantlings worth 75 for 40c.

Men's All-wool Sox worth 3.00 for 2.00. Women's Cashmere Hose worth 35 for 42c.

Men's All-wool Underwear worth 85 for 60c. Men's worth 25 for 18c. Women's worth 35 for 42c.

Men's worth 85 for 60c. Men's worth 25 for 18c. Women's worth 35 for 42c.

Men's worth 85 for 60c. Men's worth 25 for 18c. Women's worth 35 for 42c.

Men's worth 85 for 60c. Men's worth 25 for 18c. Women's worth 35 for 42c.

Men's worth 85 for 60c. Men's worth 25 for 18c. Women's worth 35 for 42c.

Men's worth 85 for 60c. Men's worth 25 for 18c. Women's worth 35 for 42c.

Men's worth 85 for 60c. Men's worth 25 for 18c. Women's worth 35 for 42c.

Men's worth 85 for 60c. Men's worth 25 for 18c. Women's worth 35 for 42c.

Men's worth 85 for 60c. Men's worth 25 for 18c. Women's worth 35 for 42c.

Men's worth 85 for 60c. Men's worth 25 for 18c. Women's worth 35 for 42c.

Men's worth 85 for 60c. Men's worth 25 for 18c. Women's worth 35 for 42c.

Men's worth 85 for 60c. Men's worth 25 for 18c. Women's worth 35 for 42c.

Men's worth 85 for 60c. Men's worth 25 for 18c. Women's worth 35 for 42c.

Men's worth 85 for 60c. Men's worth 25 for 18c. Women's worth 35 for 42c.

Men's worth 85 for 60c. Men's worth 25 for 18c. Women's worth 35 for 42c.

Men's worth 85 for 60c. Men's worth 25 for 18c. Women's worth 35 for 42c.

Men's worth 85 for 60c. Men's worth 25 for 18c. Women's worth 35 for 42c.

Men's worth 85 for 60c. Men's worth 25 for 18c. Women's worth 35 for 42c.

Men's worth 85 for 60c. Men's worth 25 for 18c. Women's worth 35 for 42c.

Men's worth 85 for 60c. Men's worth 25 for 18c. Women's worth 35 for 42c.

Men's worth 85 for 60c. Men's worth 25 for 18c. Women's worth 35 for 42c.

TIME-TABLE B.W. & S.S.M.R. Table with columns for destinations like Brockville, Ottawa, and various times.

A HANDSOME OFFER!

The Reporter has perfected arrangements by which we offer FREE to our readers a year's subscription to Womankind, the popular illustrated monthly journal published at Springfield, Ohio.

We make our Gent's furnishing department a speciality, and can give a better class where for the same money. And why? Because having a large trade in these lines we give special attention to the buying, dealing only with manufacturers, and getting closest cash prices.

Come and see us. Give us an opportunity to serve you, and you will realize the above statements as facts.

CENTRAL BLOCK ATHENS H. H. ARNOLD

Good Value POLITE ATTENTION Fair Dealing

The family who spend their money right will succeed. The family who spend their money wrong can not. When you want Groceries and Provisions go to the store and get our prices and see our goods.

We started business to sell goods, not to give them away. We cannot live without a little profit, but we cut that profit down to the lowest point. We prefer 5 per cent. profit on ten sales before 40 per cent. profit on one.

Best granulated sugar 20 lbs. for \$1.00. Bright yellow sugar 25 lbs. for 1.00. Best Valencia Raisins, 5 lbs. for .25.

Joseph Thompson.

D. W. DOWNEY

THE ONE PRICE BARGAIN SHOE HOUSE

As Xmas approaches we are all at work trying to find a suitable present for our friends that will not cost too much and be appreciated.

Gentlemen's Velvet, Plush, Corduroy, and Fine Leather Slippers in Harvard, Opera, and Revere Styles.

Ladies' Misses and Children's new patented Workable Oversockings. They fit better and wear longer than any other stockings in the market.

German Foot Slippers in all sizes, from infants to the largest size in men's. We invite you to visit us and select your Xmas presents from our large and magnificent stock.

D. W. DOWNEY

FLINT'S NEW BLOCK BROCKVILLE.

GOING OUT

Do not make any mistake. We are not going out of business, or going out of present premises. No, but what we are going out of is

Dress Goods, Mantles, Etc.

Just as soon as possible, we are going to devote our whole time and store room exclusively to

Gents' Furnishings and Boots & Shoes

Simply these and nothing more.

CONSEQUENTLY

All goods other than are included in these lines will be cleared for SPOT CASH at

LOW DOWN FIGURES

For days we have been busy marking goods down for this big reduction sale, and will be ready for the rush on Friday next. This is not simply to reduce stock; it is to transfer every article and yard of goods to happy customers.

We have prices at a point where the goods must move, and in the matter of bargains it is simply a question of first come first served.

Our stock is large—it is complete—and to clear it out by retail is a big job, but it is all going to pass over the counters in lots to suit customers, and buyers will get the benefit.

READ THESE PRICES:

Cottons worth 66 for 40c. Dress Goods, single fold worth 15c. for 10c.

Double-fold Tweed Dress Goods worth 1.50 for \$1.00. Mantlings worth 75 for 40c.

Men's All-wool Sox worth 3.00 for 2.00. Women's Cashmere Hose worth 35 for 42c.

Men's All-wool Underwear worth 85 for 60c. Men's worth 25 for 18c.

Women's worth 35 for 42c. Men's worth 85 for 60c. Men's worth 25 for 18c.

Women's worth 35 for 42c. Men's worth 85 for 60c. Men's worth 25 for 18c.

Women's worth 35 for 42c. Men's worth 85 for 60c. Men's worth 25 for 18c.

Women's worth 35 for 42c. Men's worth 85 for 60c. Men's worth 25 for 18c.

Women's worth 35 for 42c. Men's worth 85 for 60c. Men's worth 25 for 18c.

Women's worth 35 for 42c. Men's worth 85 for 60c. Men's worth 25 for 18c.

Women's worth 35 for 42c. Men's worth 85 for 60c. Men's worth 25 for 18c.

Women's worth 35 for 42c. Men's worth 85 for 60c. Men's worth 25 for 18c.

Women's worth 35 for 42c. Men's worth 85 for 60c. Men's worth 25 for 18c.

Women's worth 35 for 42c. Men's worth 85 for 60c. Men's worth 25 for 18c.

Women's worth 35 for 42c. Men's worth 85 for 60c. Men's worth 25 for 18c.

Women's worth 35 for 42c. Men's worth 85 for 60c. Men's worth 25 for 18c.

Women's worth 35 for 42c. Men's worth 85 for 60c. Men's worth 25 for 18c.

Women's worth 35 for 42c. Men's worth 85 for 60c. Men's worth 25 for 18c.

Women's worth 35 for 42c. Men's worth 85 for 60c. Men's worth 25 for 18c.

Women's worth 35 for 42c. Men's worth 85 for 60c. Men's worth 25 for 18c.

Women's worth 35 for 42c. Men's worth 85 for 60c. Men's worth 25 for 18c.

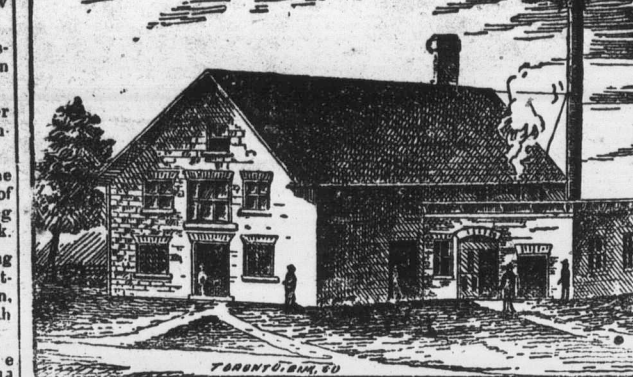
Women's worth 35 for 42c. Men's worth 85 for 60c. Men's worth 25 for 18c.

Women's worth 35 for 42c. Men's worth 85 for 60c. Men's worth 25 for 18c.

Women's worth 35 for 42c. Men's worth 85 for 60c. Men's worth 25 for 18c.

The Athens Woolen Mill Lyn Woollen Mills

One of Athens' Busy Hives of Manufacturing Industry.



The building shown in the above engraving was originally built for a tannery, later it was converted into a woollen factory, and, later still, into a planing, door and sash factory. The property came into the hands of W. G. Parham a couple of years ago and last year the machinery was removed by him and placed in his new factory near the H. & W. station.

The building shown in the above engraving was originally built for a tannery, later it was converted into a woollen factory, and, later still, into a planing, door and sash factory. The property came into the hands of W. G. Parham a couple of years ago and last year the machinery was removed by him and placed in his new factory near the H. & W. station.

The building shown in the above engraving was originally built for a tannery, later it was converted into a woollen factory, and, later still, into a planing, door and sash factory. The property came into the hands of W. G. Parham a couple of years ago and last year the machinery was removed by him and placed in his new factory near the H. & W. station.

The building shown in the above engraving was originally built for a tannery, later it was converted into a woollen factory, and, later still, into a planing, door and sash factory. The property came into the hands of W. G. Parham a couple of years ago and last year the machinery was removed by him and placed in his new factory near the H. & W. station.

The building shown in the above engraving was originally built for a tannery, later it was converted into a woollen factory, and, later still, into a planing, door and sash factory. The property came into the hands of W. G. Parham a couple of years ago and last year the machinery was removed by him and placed in his new factory near the H. & W. station.

The building shown in the above engraving was originally built for a tannery, later it was converted into a woollen factory, and, later still, into a planing, door and sash factory. The property came into the hands of W. G. Parham a couple of years ago and last year the machinery was removed by him and placed in his new factory near the H. & W. station.

The building shown in the above engraving was originally built for a tannery, later it was converted into a woollen factory, and, later still, into a planing, door and sash factory. The property came into the hands of W. G. Parham a couple of years ago and last year the machinery was removed by him and placed in his new factory near the H. & W. station.

The building shown in the above engraving was originally built for a tannery, later it was converted into a woollen factory, and, later still, into a planing, door and sash factory. The property came into the hands of W. G. Parham a couple of years ago and last year the machinery was removed by him and placed in his new factory near the H. & W. station.

The building shown in the above engraving was originally built for a tannery, later it was converted into a woollen factory, and, later still, into a planing, door and sash factory. The property came into the hands of W. G. Parham a couple of years ago and last year the machinery was removed by him and placed in his new factory near the H. & W. station.

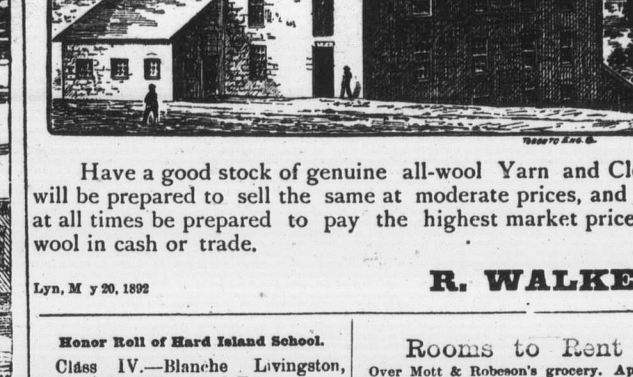
The building shown in the above engraving was originally built for a tannery, later it was converted into a woollen factory, and, later still, into a planing, door and sash factory. The property came into the hands of W. G. Parham a couple of years ago and last year the machinery was removed by him and placed in his new factory near the H. & W. station.

The building shown in the above engraving was originally built for a tannery, later it was converted into a woollen factory, and, later still, into a planing, door and sash factory. The property came into the hands of W. G. Parham a couple of years ago and last year the machinery was removed by him and placed in his new factory near the H. & W. station.

The building shown in the above engraving was originally built for a tannery, later it was converted into a woollen factory, and, later still, into a planing, door and sash factory. The property came into the hands of W. G. Parham a couple of years ago and last year the machinery was removed by him and placed in his new factory near the H. & W. station.

The Athens Woolen Mill Lyn Woollen Mills

One of Athens' Busy Hives of Manufacturing Industry.



The building shown in the above engraving was originally built for a tannery, later it was converted into a woollen factory, and, later still, into a planing, door and sash factory. The property came into the hands of W. G. Parham a couple of years ago and last year the machinery was removed by him and placed in his new factory near the H. & W. station.

The building shown in the above engraving was originally built for a tannery, later it was converted into a woollen factory, and, later still, into a planing, door and sash factory. The property came into the hands of W. G. Parham a couple of years ago and last year the machinery was removed by him and placed in his new factory near the H. & W. station.

The building shown in the above engraving was originally built for a tannery, later it was converted into a woollen factory, and, later still, into a planing, door and sash factory. The property came into the hands of W. G. Parham a couple of years ago and last year the machinery was removed by him and placed in his new factory near the H. & W. station.

The building shown in the above engraving was originally built for a tannery, later it was converted into a woollen factory, and, later still, into a planing, door and sash factory. The property came into the hands of W. G. Parham a couple of years ago and last year the machinery was removed by him and placed in his new factory near the H. & W. station.

The building shown in the above engraving was originally built for a tannery, later it was converted into a woollen factory, and, later still, into a planing, door and sash factory. The property came into the hands of W. G. Parham a couple of years ago and last year the machinery was removed by him and placed in his new factory near the H. & W. station.

The building shown in the above engraving was originally built for a tannery, later it was converted into a woollen factory, and, later still, into a planing, door and sash factory. The property came into the hands of W. G. Parham a couple of years ago and last year the machinery was removed by him and placed in his new factory near the H. & W. station.

The building shown in the above engraving was originally built for a tannery, later it was converted into a woollen factory, and, later still, into a planing, door and sash factory. The property came into the hands of W. G. Parham a couple of years ago and last year the machinery was removed by him and placed in his new factory near the H. & W. station.

The building shown in the above engraving was originally built for a tannery, later it was converted into a woollen factory, and, later still, into a planing, door and sash factory. The property came into the hands of W. G. Parham a couple of years ago and last year the machinery was removed by him and placed in his new factory near the H. & W. station.

The building shown in the above engraving was originally built for a tannery, later it was converted into a woollen factory, and, later still, into a planing, door and sash factory. The property came into the hands of W. G. Parham a couple of years ago and last year the machinery was removed by him and placed in his new factory near the H. & W. station.

The building shown in the above engraving was originally built for a tannery, later it was converted into a woollen factory, and, later still, into a planing, door and sash factory. The property came into the hands of W. G. Parham a couple of years ago and last year the machinery was removed by him and placed in his new factory near the H. & W. station.

The building shown in the above engraving was originally built for a tannery, later it was converted into a woollen factory, and, later still, into a planing, door and sash factory. The property came into the hands of W. G. Parham a couple of years ago and last year the machinery was removed by him and placed in his new factory near the H. & W. station.

The building shown in the above engraving was originally built for a tannery, later it was converted into a woollen factory, and, later still, into a planing, door and sash factory. The property came into the hands of W. G. Parham a couple of years ago and last year the machinery was removed by him and placed in his new factory near the H. & W. station.

Honor Roll of Hard Island School.

Class IV—Blanche Livingston, Jessie Foley, Winnifred Foley, Clara Hill, Barton Livingston, Blake Wilson, Eunice Robeson, Allison Palmer, Ethel Colman, Blake Palmer.

Class II—Minnie Foley, Cullie Robeson, Martin Livingston, Calvin Robeson, Jennie Robeson, Class I, pt. 2nd—Lola Whaley, Nellie Robinson, Sherill Robeson, Watson Robeson.

Class I—Lillie Livingston, Vane, Foley.

Attendance, 20. LIONNE HALLADAY, Teacher.

BIRTHS. McLEAN.—At Athens, on Sunday the 8th inst., the wife of A. E. McLean, of a daughter.

MARRIAGE. COON.—BERDLE.—On Jan. 4th, 1932, at the Methodist parsonage, Athens, by the Rev. John Grenfell, Mr. Abram E. Coon of Elgin, Co. Leeds, Ont., son of Justus Coon Esq. of Elgin, Ont., to Miss Elizabeth Berdle, daughter of John Berdle, Esq., of the Township of Leeds, Ont.

For Sale or to Rent. Three houses to rent or for sale. Apply to H. H. Arnold, Athens, Ont. If May 2, 1932.

FARMERS' INSTITUTE MEETINGS. Meetings of the Farmers' Institute will be held at New Dublin on Jan. 16 AND AT Athens on Jan. 17.

At each place there will be three sessions, at 10, 11 and 12 o'clock. The first session will be held in the Town Hall.

Professor J. H. Patton, M. A., F. G. S., of Ontario, a College of Agriculture, will be in charge of the reading papers or deliver addresses at all of the meetings. J. S. MALLORY, Sec'y., Malloryville, Jan. 2, 1932.

Logs - Wanted. The undersigned will pay the following prices in cash for good, sound logs, free from knots and shakes cut to the lengths mentioned, delivered at his factory near the railway station, Athens.

Honch Bark Hickory, cut 12 feet \$3.00. Hard Spruce, cut 12 feet 2.00. White Ash, cut 12 feet 1.50. Black Ash, cut 12 feet 1.25. Growth Red Oak, cut 11 or 16 feet 1.25. Hard Spruce, cut 12 feet 2.00. Black Ash, not less than 16 inches at top end, cut 12 feet 1.00. Custom quoted is per standard. Cash made on all kinds done on short notice at reasonable prices. S. Y. BULLIS, Athens.

Mortgage Sale OF FARM PROPERTY.

Default having been made in payment of the money secured to be paid by a mortgage dated 28th Nov. 1929, of \$1000.00, by Albert Homer Singleton of the Township of Lanark and Sarah Alexandra Singleton, his wife for the purpose of buying, under which mortgage will be produced at the time and place of sale.

All and singular that certain parcel or tract of land and premises hereinafter described, together with the powers in said mortgage contained at present in force, and the same, together with all and singular that are or may be or shall be in or upon the same, are hereby sold by public auction under and by virtue of the powers in said mortgage contained at present in force, on Thursday, Jan. 26th, at the hour of one o'clock in the afternoon, at the County Jail, in the Township of Lanark, Ontario, to the highest bidder for cash.

And singular that certain parcel or tract of land and premises hereinafter described, together with the powers in said mortgage contained at present in force, and the same, together with all and singular that are or may be or shall be in or upon the same, are hereby sold by public auction under and by virtue of the powers in said mortgage contained at present in force, on Thursday, Jan. 26th, at the hour of one o'clock in the afternoon, at the County Jail, in the Township of Lanark, Ontario, to the highest bidder for cash.

And singular that certain parcel or tract of land and premises hereinafter described, together with the powers in said mortgage contained at present in force, and the same, together with all and singular that are or may be or shall be in or upon the same, are hereby sold by public auction under and by virtue of the powers in said mortgage contained at present in force, on Thursday, Jan. 26th, at the hour of one o'clock in the afternoon, at the County Jail, in the Township of Lanark, Ontario, to the highest bidder for cash.

And singular that certain parcel or tract of land and premises hereinafter described, together with the powers in said mortgage contained at present in force, and the same, together with all and singular that are or may be or shall be in or upon the same, are hereby sold by public auction under and by virtue of the powers in said mortgage contained at present in force, on Thursday, Jan. 26th, at the hour of one o'clock in the afternoon, at the County Jail, in the Township of Lanark, Ontario, to the highest bidder for cash.

And singular that certain parcel or tract of land and premises hereinafter described, together with the powers in said mortgage contained at present in force, and the same, together with all and singular that are or may be or shall be in or upon the same, are hereby sold by public auction under and by virtue of the powers in said mortgage contained at present in force, on Thursday, Jan. 26th, at the hour of one o'clock in the afternoon, at the County Jail, in the Township of Lanark, Ontario, to the highest bidder for cash.

And singular that certain parcel or tract of land and premises hereinafter described, together with the powers in said mortgage contained at present in force, and the same, together with all and singular that are or may be or shall be in or upon the same, are hereby sold by public auction under and by virtue of the powers in said mortgage contained at present in force, on Thursday, Jan. 26th, at the hour of one o'clock in the afternoon, at the County Jail, in the Township of Lanark, Ontario, to the highest bidder for cash.