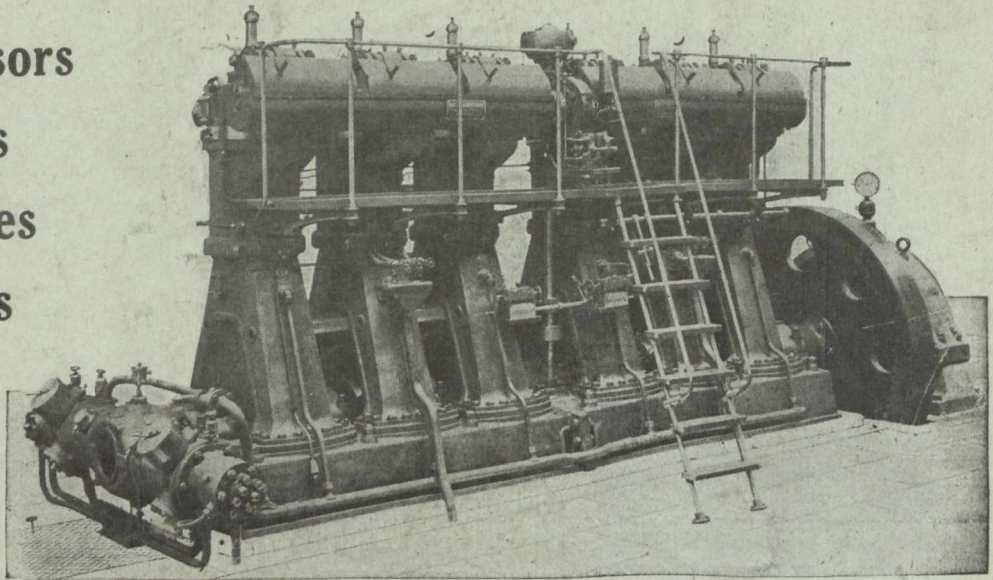


# BELLISS & MORCOM

Air Compressors  
Diesel Engines  
Steam Turbines  
Steam Engines  
Condensers



BELLISS & MORCOM DIESEL CRUDE OIL ENGINE.

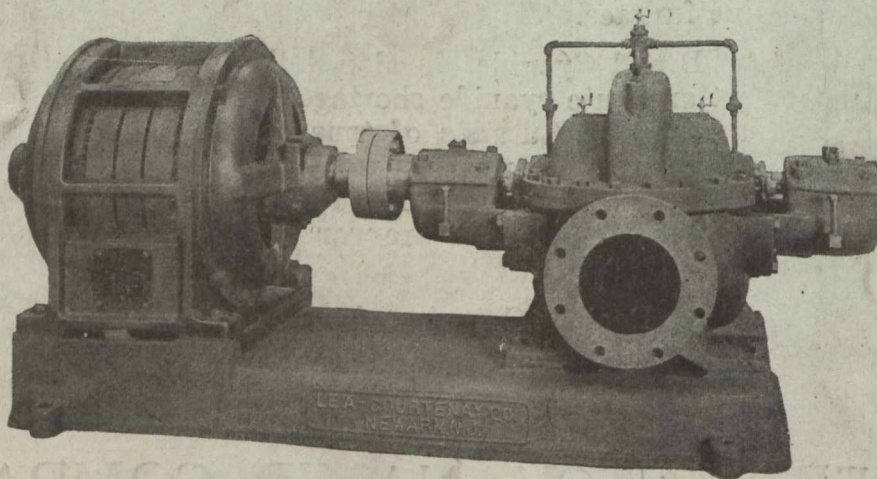
## LAURIE & LAMB

211 Board of Trade Building

MONTREAL

For high heads at 1450 and 1750 R.P.M. without diffusion vanes, or greater speeds with turbine drive, the pump for satisfactory service is a Lea-Courtenay double-suction volute full bronze-fitted pump.—Series E. M.

A standard 8-inch motor-driven pump of this type. Ask for bulletin giving details.



Lea-Courtenay Centrifugal Pumps for every kind of pumping service.

## FRASER & CHALMERS OF CANADA

GUARANTEE BUILDING

LIMITED

MONTREAL, QUE.