



REGINA STALLION SHOW.  
Perpetual Motion.

### Smut Growth, Manuring Grasses.

EDITOR FARMER'S ADVOCATE:

I have been a constant reader of your paper for about one and a half years and like it very much. Of course there are some items that do not interest me but probably they interest some one else. I am always glad to read letters from farmers who have had actual experience. I noted very carefully the contents of Tully Elder's letter which appeared some time ago in regard to smut in wheat. I am a great deal like him, a non-believer in the theory that smut produces smut, and have treated my seed simply because other people did and never raised smut until last year when I prophesied that it was going to be a dry season and set my seed extra deep. I am trying an experiment this year by sowing in my garden at different depths seed that has been treated with bluestone and seed that has been treated with smut until it is black. Kindly let me also know if it is successful to put manure on a newly seeded meadow, say sow the seed this spring and manure in the fall.

D. E. C.

[Although there are many circumstances that might appear to indicate that smut does not reproduce like the higher plants still they can all be explained away when all the conditions are known. One thing about it is that deep sowing is conducive to its growth as it germinates better in the damp, cool soil than near the warmer dryer surface where wheat starts best.

Manure applied in late fall or winter should be of immense benefit to the grass provided it is spread on thin enough.]

### British Wheat Prices.

We have been furnished quotations of wheat and flour prices of different grades upon the Great Britain markets and we publish them for the sake of comparison. The quotations are given in Canadian currency for the better understanding of our readers.

April 17th, 1906. To-day's spot prices. Liverpool wheat per 100 lbs.: Australian, \$1.66 to \$1.68; Walla Walla, \$1.63 to \$1.64; 1 Nor. Manitoba \$1.58 to \$1.59; 2 Nor. Manitoba \$1.57 to \$1.57½; 3 Nor. Manitoba \$1.54 to \$1.55; 4 Nor. Manitoba \$1.54 to \$1.54½; Canadian Spring \$1.55 to \$1.56; Rosario Santa Fee (new) \$1.52 to \$1.59; Southern Plate (new) \$1.56 to \$1.57; Russian \$1.62 to \$1.63; Danubian \$1.51 to \$1.62; Syrian \$1.36 to \$1.44; New Zealand \$1.52 to \$1.53.

Flour per 280 lbs.: English made patent \$5.88 to \$6.90; English made baker \$5.40 to \$5.52; Australian \$5.78 to \$6.12; Hungarian \$7.32 to 7.44; Argentine Fine Patent \$6.24 to \$6.48; Argentine Second Patent \$5.88 to \$6.12; Argentine Medium grade \$5.16 to \$5.52; American Spring 1st Patent \$6.00 to \$6.12; American Winter Patent \$6.00 to \$6.12; Kansas Patent \$5.52 to \$5.76.

### PRICES COMPARED.

All prices refer to the English cental 480 lbs.:

	Now, April 17.	Week ago, April 10th.	Month ago, March 20th.	Year ago, April 18th.	2 Years ago, April 19th.
Australian Prompt	\$7 44	\$7 44	\$7 38	\$7 56	\$7 20
Plate (Argentine)	7 30	7 30	7 30	7 54	7 48
Liverpool					
1 Nor. Manitoba	7 62	7 62	7 60	8 52	8 24
London.					
2 Nor. Manitoba	7 54	7 50	7 42	8 40	8 40
Liverpool.					
Russian	7 68	7 62	7 58	7 68	7 72
Eng. Red Mid. price	7 02	7 02	6 98	7 58	6 96
London.					

### Lupine a Troublesome Weed.

A reader in British Columbia asks for a method of eradicating lupine and as our experience of weeds has never brought us in contact with the troublesome variety of lupine, we ask any of our readers, who may have had success in exterminating this species to give us their experience.

### List of Farmer's Institute Meetings for Manitoba.

Morris	June 8th	2 o'clock
Emerson	" 8th & 9th 6 "	
Swan River	" 13th "	
Dauphin	" 14th "	
Gilbert Plains	" 15th "	
Plumas	" 16th "	
Gladstone	" 18th "	
Portage la Prairie	" 19th "	
Macgregor	" 20th "	
Carberry	" 21st "	
Blyth	" 22nd "	

Speakers—Prof. Rutherford, Agriculturist, Manitoba Agricultural College, Winnipeg.

Alex. M. Campbell, M.A., Argyle, Man.

Prof. Rutherford will be prepared to speak on "Agricultural College" and "Conditions affecting the growing of crops."

Mr. Campbell will be prepared to speak on "How to make more money on a farm" and "Maintaining soil fertility."

Russell	June 5th	2 o'clock
Birtle	" 8th & 9th 6 "	
Shoal Lake	" 7th "	
Strathclair	" 8th "	
Minnedosa	" 9th "	
Arrow River	" 12th "	
Hamiota	" 13th "	
Oak River	" 14th "	
Harding	" 15th "	

Speakers—J. J. Ring, Crystal City, Man.

Subject—"Grasses and rotation of crops" and "Maintaining soil fertility."

J. J. Golden, Winnipeg.

Subjects—"Course at Manitoba Agricultural College", "Noxious weeds and how to destroy them" and "Improving the value of the homestead."

### Things to Remember.

#### SASKATCHEWAN FAIR CIRCUITS.

Indian Head	July 12-13
Churchbridge	July 17
Saltcoats	July 18
Yorkton	July 10-11
S. Qu'Appelle	August 2-3
Moosomin	August 7
Wolsely	August 8
Wapella	August 9
Sintaluta	August 10
Ft. Qu'Appelle	August 14
Fairmeade	August 15
Grenfell	August 16
Stoughton	August 16
Creelman	August 3
Moose Jaw	August 7-8
Regina	August 8, 9-10

Prince Albert	August 14-15
Alameda	August 7
Carnduff	August 8
Gainsboro	August 9
Carlyle	August 10
Kinistino	September 21
Duck Lake	September 28
Saskatoon	October 2-3
Rosthern	October 4-5
Lloydminster	October 11
Battleford	October 19
North Battleford	October 12
Broadview	September 25
Maple Creek	September 27
Estevan	September 28

#### ALBERTA FAIR CIRCUITS.

Calgary	July 10, 11-12
Pincher Creek	July 13
Okotoks	July 17
Fort Saskatchewan	Aug. 14
Lethbridge	Aug. 16-17
Cardston	Sept. 18
Magrath	Sept. 20
Raymond	Sept. 21
Olds	Sept. 24-25
Didsbury	Sept. 26
Vermillion Valley and Beaver Lake (Vegreville)	Sept. 27-28
Medicine Hat	Oct. 2-3
Macleod	Oct. 4-5
Red Deer	Oct. 9-10
Ponoka	Oct. 11-12
Innisfail	Oct. 12
Lacombe	July 2-3
Edmonton	July 2-5

#### MANITOBA FAIR CIRCUITS.

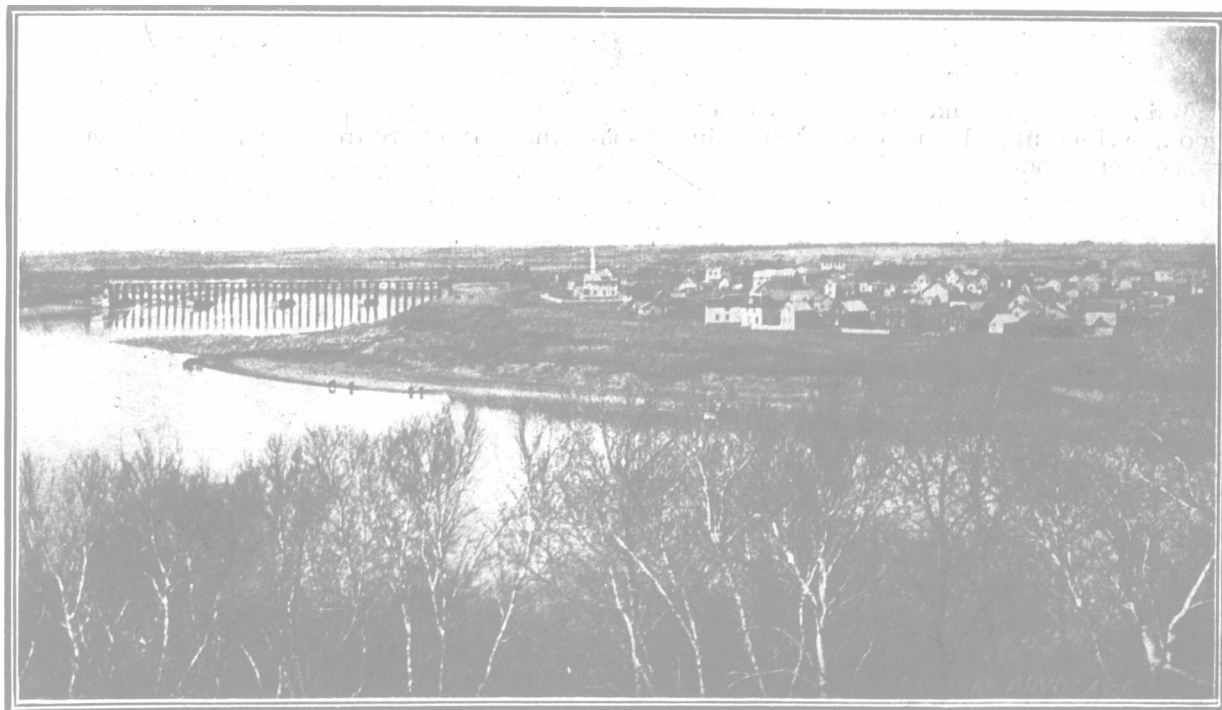
Emerson	July 9-10
St. Pierre	July 11
Morris	July 13
Carman	July 16-17
Cypress River	July 18
Wawanesa	July 19
Swan Lake	July 20
Melita	July 17-18
Deloraine	July 18-19
Cartwright	July 19-20
Viriden	July 16-17
Oak Lake	July 18
Carberry	July 19
Portage la Prairie	July 2
Gladstone	July 20
Birtle	Aug. 7
Strathclair	Aug. 8
Oak River	Aug. 9
Hamiota	Aug. 14
Dauphin	Aug. 16
Swan River	Aug. 17
Souris	Aug. 6-0
Manitou	Aug. 9-18
Woodlands	Sept. 22
St. Francois Xavier	Oct. 3
Stonewall	Oct. 2
St. Jean	Oct. 2
Beausejour	Oct. 3
Plumas	Oct. 5
Gilbert Plains	Oct. 3
Macgregor	Oct. 5
Russell	Oct. 0
Meadow Lea	Oct. 1
Headingley	Oct. 2
Harding	Oct. 25

#### PLOWING MATCHES.

Bird's Hill on T. Smith's farm	June 7
Portage la Prairie on F. A. Connor's farm	June 12

#### Plowing Matches.

The list of things to remember contains the dates of plowing matches which deserve encouragement at the hands of farmers, tillage being one of the things in agriculture, either mixed farming or grain growing, that we cannot afford to overlook.



SASKATOON, THE CITY THAT IS DESIGNED TO BECOME THE COMMERCIAL CENTRE OF SASKATCHEWAN.