

ATTRACTIVE AUCTION SALE

To take place at **JERSEYDALE STOCK FARM**, close to town of **UXBRIDGE, ONT.**, on Midland branch of G. T. R., 40 miles from Toronto, on

THURSDAY, FEBRUARY 23rd, 1905

When the following pure-bred stock will be sold:

62 SCOTCH AND SCOTCH-TOPPED

SHORTHORNS

Property of **COL. J. A. MCGILLIVRAY**, some of which are imported, about one-half straight Scotch, balance Scotch-topped, and representing the following famous families: Missie, Claret, Village, Duchess of Glosster, Nonpareil, Miss Ramsden, Mina, Kilblean Beauty, Crimson Flower and Stamford.

Also, at same time and place, one 3-year-old registered **CLYDESDALE STALLION**, one registered **CLYDESDALE MARE IN FOAL**; 30 registered **DORSET HORN SHEEP**, from the flock which won the Premium Championship prize at the St. Louis Exhibition; also **YORKSHIRE PIGS**. The Shorthorn herd has been carefully built up for 15 years. As the owner is giving up his farms, all will be sold, including **GENERAL FARM STOCK, IMPLEMENTS, etc.**

Catalogues mailed on application.

CAPT. T. E. ROBSON,
F. W. SILVERSIDES,

Auctioneers.

JOHN A. MCGILLIVRAY,
Uxbridge, Ont.

Teams will meet all morning trains.

WARNING

To all whom it may concern: We are the sole owners and licensees of all patents and rights on

The World-Famous TUBULAR CREAM SEPARATORS

In violation of our Canadian patents, an imitating cream separator called the "Unedda" has in some localities been offered for sale, and suits of law are now pending against the manufacturers thereof. Under the law a user of these infringing machines is also liable for all damages resulting to the patentee through his use thereof. We hereby inform you that in buying or using one of these so-called "Unedda" separators, you not only get a very inferior separator, incapable of giving you such results as you should have, but you buy a lawsuit with all its expensive attendants and with a practical certainty of the early loss of the machine and a verdict of heavy damages against you.

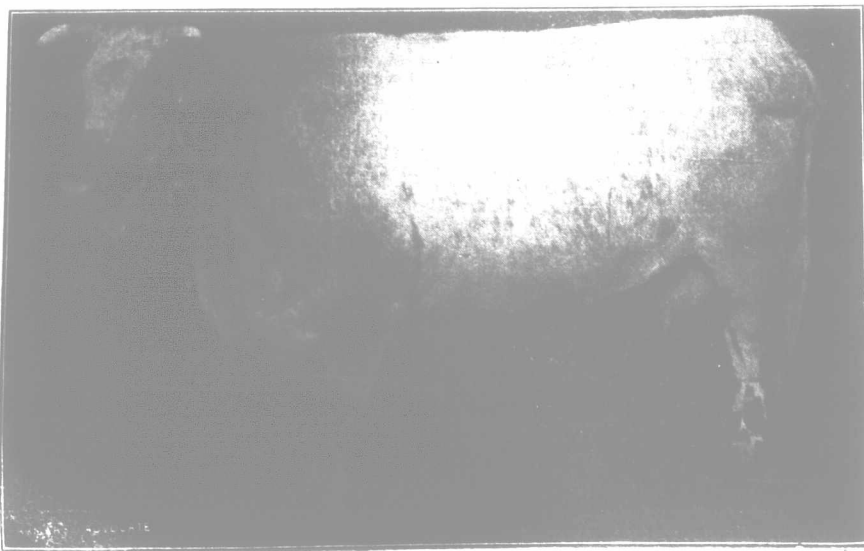
That you may be fully informed on this subject before becoming involved, write to

P. M. Sharples, West Chester, Pa., U. S. A.

Inquiries may also be made from our solicitors,

Masten, Starr & Spence, Toronto, Can.

ADVERTISE IN THE ADVOCATE



Water Cress (Imp.) = 38181

In answering any advertisement on this page, kindly mention the FARMER'S ADVOCATE.

QUESTIONS AND ANSWERS. veterinary.

AILING SOW.

Sow, three years old, lost the use of her hind parts, and has not walked for six weeks; have been giving her sulphur, but it does no good. J. H.

Ans.—It is very doubtful if anything can be done in this case with any hope of a recovery. Spirits of turpentine well rubbed in to the loins, or a big mustard plaster applied are the treatments most likely to give relief.

GARGET IN COW.

1. Cow that calved on January 28th has one quarter of her udder badly swollen, and has been ever since she was drying up; gives very little milk, but does not seem sore. Please explain this, if possible, cause and cure. She is a heavy milker.

2. Could you give us some information about packing ice? B. B.

Ans.—Cow will probably lose use of this quarter. Bathing quarter with hot water (not scalding) half an hour at a time, twice or three times daily, rub dry with a flannel cloth, then rub well with goose oil or belladonna liniment, which a druggist will prepare. Give a teaspoonful of pulverized nitrate of potash or saltpetre in her feed, or as a drench in a quart of water.

2. See Feb. 2nd issue.

Miscellaneous.

PEAS AS GREEN MANURE AND FOR GRAIN.

1. I have a piece of sandy land in poor condition upon which I should like to plant corn, turnips and potatoes. Would peas sowed early at a rate of two and one-half bushels per acre be a profitable manure? Barnyard manure is scarce. Last crop raised was oats and buckwheat.

2. Sandy loam, last crop oats; can I sow peas profitably, and next fall sow wheat and seed with clover?

3. Would a millet stubble with a moderate coat of manure be suitable for factory corn? The field having been broken out of clover sod last spring, the clover roots were winter killed.

4. Kindly name early and late varieties of factory corn bearing large ears. T. W. A.

Norfolk Co.
Ans.—1. If it is intended to plant corn and roots the same season, the cost of seed peas and extra labor would be almost thrown away. A crop of peas left to grow until blossoming time and then plowed under will greatly enrich poor land.

2. Fall wheat succeeds very well after peas. Peas have in our southern counties, been far from profitable for some years, however, owing to the ravages of pea-weevil and to unsuitable seasons, and it might be unwise for you to try them. They grow best on inverted sod.

3. Quite suitable. If the cost of manure was more moderate, it would be all the better.

4. There are no varieties as yet better than White Cory for early and Stowell's Evergreen for late use.

POULTRY AND EGGS

Condensed advertisements will be inserted under this heading at two cents per word each insertion. Each initial counts for one word, and figures for two words. Names and addresses are counted. Cash must always accompany the order for any advertisement under this heading. Parties having good pure-bred poultry and eggs for sale will find plenty of customers by using our advertising columns. No advertisement inserted for less than 30 cents.

BARRED ROCKS exclusively. Young cockerels for sale. Prices on application. Miss E. Spilsbury, Colborne, Ont.

WHITE Wyandotte Cockerels and eggs from the choicest strains. W. D. Monkman, Bond Head, Ont.

WHITE Leghorn Pen, imported, seven birds. Breeding Silver Wyandotte cocks and cockerels. Write E. W. Burt, Paris.

INCUBATORS, Poultry and Pet Stock Supplies.—Our incubators are guaranteed. You run no risk. Write at once for a large new catalogue. A. J. Morgan, London, Ont.

WHITE LEGHORNS and **White Wyandottes**—Ontario's leading strains. Choice birds for sale. Write for mailing list. Eggs \$2 per fifteen. Ernest Charlton, Ilderton, Ont.

Barred and White Rocks—Good big Barred and \$2 each. Fi-hel White Rocks at \$2 each. \$5 per trio. H. GEE & SONS, Selkirk, Ont.

Mammoth Bronze Turkeys and **CHESTER WHITES**, bacon type. Write for prices. W. E. WRIGHT, Glanworth, Ont.

\$9,000 Poultry Catalog—40 kinds Turkeys, Geese, Ducks, Chickens, fowls and eggs cheap. 100 grand pictures, 50 loose plans. We make hens lay, cure diseases, etc. Send 10 cts. for mailing catalogue. Incubators 30 days free trial. Catalog free. J. R. Brecken Jr. & Co., Box 113 Delavan, Wis.

\$12.80 For 200 Eggs INCUBATOR—Perfect in construction and action. Hatches every fertile egg. Write for catalog to-day. GEO. H. STAHL, Quincy, Ill.

The Daniels INCUBATORS

Are the latest and most modern invention for artificial hatching of turkeys, chickens and ducks. Do not forget we guarantee the Daniels incubators to be satisfactory to the purchaser. We manufacture Chas. A. Cyphers Model Incubators and Brooders. Made in Canada. We carry a full line of poultry supplies. Our new catalogue is out, and is free for the asking.

G. J. DANIELS, 196 to 200, TORONTO

SHOEMAKER'S BOOK on POULTRY

and almanac for 1905, contains 224 pages, with many fine colored plates of fowls true to life. It tells all about chickens, their care, diseases and remedies. All about INCUBATORS and how to operate them. All about poultry houses and how to build them. It's really an encyclopedia of chicken-dom. You need it. Price only 15c. C. C. SHOEMAKER, Box 805, FREEPORT, ILL.

Great Dispersion Sale of OAK LANE SCOTCH SHORTHORNS

The property of Messrs. Goodfellow Bros., Macville, Ont.

—AT—
OAK LANE FARM,

2 MILES FROM BOLTON, C. P. R.

Thursday, Feb. 16th, 1905

28 Head, Imp. or bred from Imp. stock, 4 Bulls and 24 females of most select Scotch breeding and highest individual excellence. Many of them are winners at Toronto, London and Ottawa.

All morning and evening trains, both north and south bound, will stop at the farm, 100 yards from the barn.

Lunch provided. Catalogues on application.

Col. J. K. McEwen,
WESTON,

Auctioneers.

Capt. T. E. Robson,
ILDERTON,