

Both the North Atlantic, Asiatic, and North Pacific species of *Gastropteron* are of a reddish colour sprinkled densely with darker red dots. The present form is of a uniform dusky slate colour and of a smaller size than the Pacific species described by Bergh. It is an interesting addition to the sparse list of known species. The spread of the parapodia totals 10 to 15 mm., the length of the body 8 to 11 mm. (in spirits), in the living state it was probably larger. The anterior shield is about one-third the whole length of the body. Like *G. pacificum*, it lacks a posterior flagellum on the mantle.

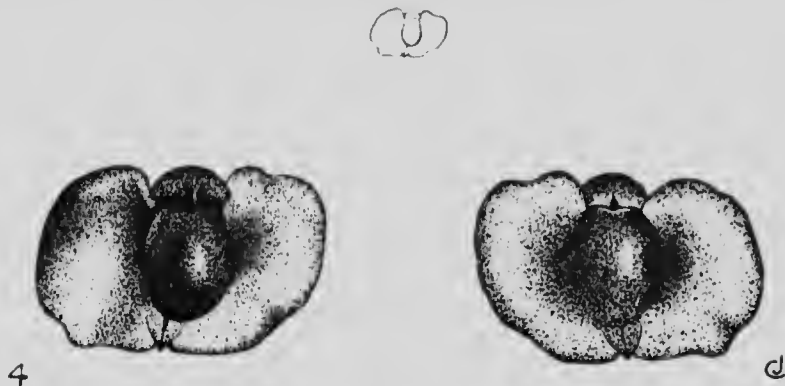


Fig. 1. *Gastropteron pacificum* Bergh var. *G. canicum* Dill, new species. Left, dorsal aspect; right, ventral. X 4. Upper outline figure, natural size.

#### Eggs of fish?

Station 7a, b. Latitude 55° 42' N., longitude 136° 20' W., June 25, 1918. Eggs, probably of fish, were found floating on the surface. (F.J.)

#### Young of Sipunculoid worm?

Station 57. 1 fathom in marine plankton, off Cape Smyth, near Point Barrow, Alaska.

This puzzled our experts, but is left without positive determination, being badly contracted by the preservative.