

CANADIAN PACIFIC

Going To Muskoka

See your ticket reads via C. P. R. and Bala, assuring a comfortable, speedy journey.

All Resorts on the Lakes

reached by through steamer service from Bala, connecting with trains.

LEAVE TORONTO:
 2.30 a. m. 11.30 a. m. 6.15 p. m.
Sleeper on night train open at 9 p. m.
LUXURIOUS EQUIPMENT

Tickets, berth reservations and full particulars at C. P. R. City Ticket Office, corner King and Yonge Streets. Phone Main 6580.



THE LAKE SHORE EXPRESS

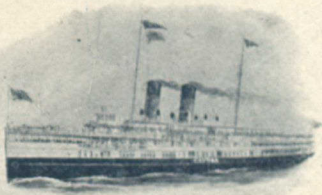
FAST TRAIN FOR MUSKOKA LAKE

Leaves Toronto 10 a.m.

Connecting at Bala Park and Lake Joseph with Muskoka Nav. Co. Steamers arrive Beaumaris 2.15 p.m., Port Cockburn 3.00 p.m., Port Sandfield 3.30 p.m., Royal Muskoka 4.30 p.m.; other points in proportion.

OFFICES:
 Corner King and Toronto Sts. and Union Station, TORONTO
 Main 5600-5179

Niagara Navigation Co. (Limited)



CONNECTING

TORONTO — NIAGARA FALLS — BUFFALO

6 trips daily (except Sunday). Write for Illustrated Booklet.

B. W. FOLGER, Manager, TORONTO, CANADA

Lake Shore Ry.



"AMERICA'S GREATEST RAILWAY SYSTEM"

6 HOURS

BETWEEN

Buffalo and Pittsburgh

By using the famous

Pittsburgh Limited

Leaving Buffalo - - - 10 00 a. m. Daily
 Arriving Pittsburgh - - - 4.00 p. m. Daily
 Other good trains for Pittsburgh leave
 Buffalo EVERY DAY
 1.30 p. m. 2.00 p. m. 11.55 p. m.

Call at Ticket Office, 80 Yonge St., Toronto (Telephone Main 4361) or write C. H. Chevee, General Eastern Passenger Agent, Buffalo N. Y.



"Highlands of Ontario"

The ideal Summer Resort region of America, including the following fascinating districts:

- MUSKOKA LAKES
- LAKES SIMCOE AND COUCHICHING
- LAKE OF BAYS
- MAGANETAWAN RIVER
- TEMAGAMI
- LAKE NIPISSING AND FRENCH RIVER
- 30,000 ISLANDS GEORGIAN BAY
- ALGONQUIN PARK
- KAWARTHA LAKES, Etc.

40,000 SQUARE MILES of lake, river and island scenery.

1,000 to 2,000 feet above sea level. Fishing—Shooting—Canoeing—Camping. PERFECT IMMUNITY FROM HAY FEVER. Splendid train service to all districts via GRAND TRUNK RAILWAY SYSTEM.

Booklets descriptive of any of the above districts free on application to J. D. McDONALD, District Passenger Agent, Toronto, Ontario.

W. E. DAVIS
 Passenger Traffic Manager
 MONTREAL

G. T. BELL
 Gen. Pass. and Ticket Agent
 MONTREAL