

The DOHERTY PIANO & ORGAN Co. Ltd.

*beg to announce that they have moved
from their premises at 280 Hargrave
Street, and are now at home in their*

Magnificent New Store
—324 Donald Street—
(Just North of Portage Avenue)

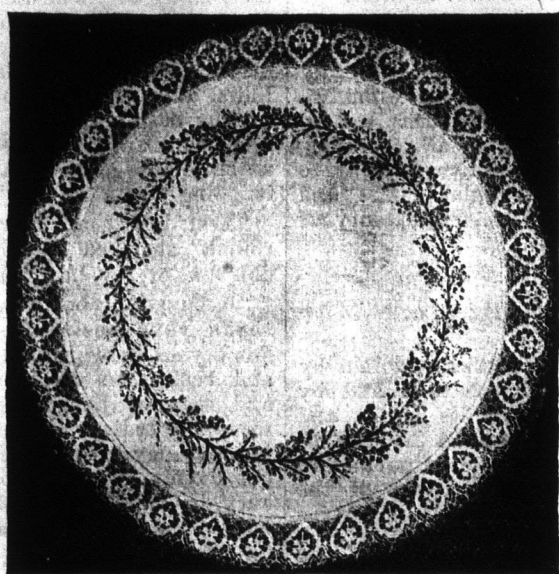
*This Store is the most beautiful of its
kind in Western Canada and you are
cordially invited to come and inspect
our new quarters when in the city.*

LARGER STOCKS THAN EVER
LOW PRICES AS USUAL

at our

New Winnipeg Branch
324 Donald Street Long Distance Phones.

If You will send us 35c.



For eight skeins of ART EMBROIDERY SILK which is sufficient to embroider a 15 inch Cream Linen Centre Piece, stamped for the new HEATHER EMBROIDERY.

We will give you FREE, this Centre Piece, and sufficient Cream Lace to edge this as illustrated, also a diagram lesson which will teach any woman this beautiful embroidery which is simple but effective.

Send to-day, as this generous offer is good for a short time only.

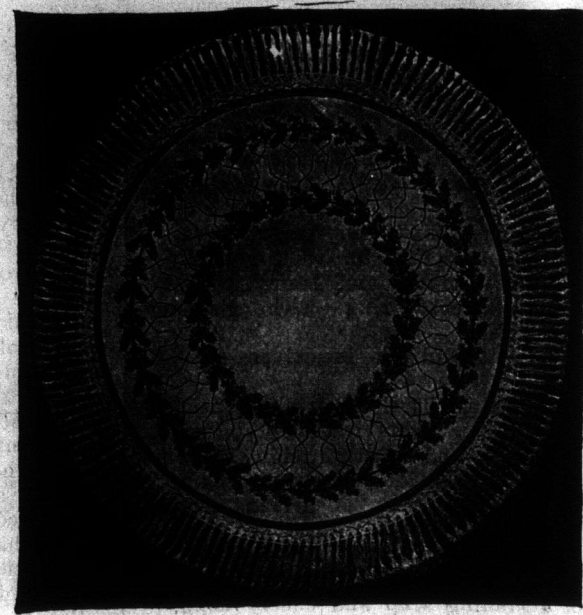
This offer is made to convince every woman that our ART EMBROIDERY SILKS are the best made.

Address:

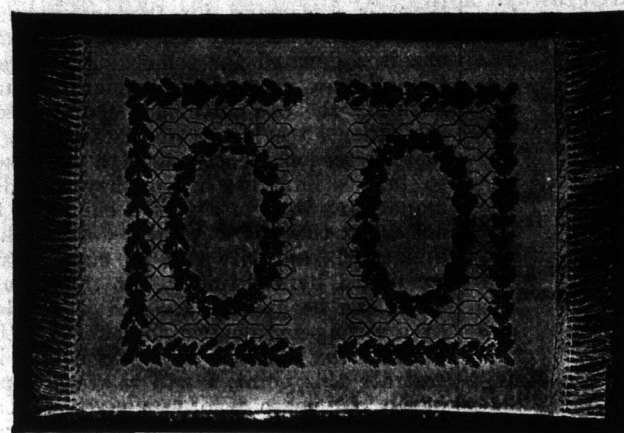
BELDING PAUL CORTICELLI LIMITED,
Dept. L. Montreal, P.Q.

Heather Bloom Embroidery.

A fashionable idea at present is to have a matched set consisting of centrepiece, scarf and cushion, where the three are to be used in one room. One of the newest embroideries being shown is called "Heather Bloom." It is most effective and dainty and the stitch consists of groups of heavy French knots. The heather is embroidered in shades of reddish purple, and the stitch is formed by twisting a heavy silk two or three times around a coarse needle so that the knot is full and round. Two strands of royal floss or four threads of filo floss may be used, and this embroidery is so quickly worked that one may easily be tempted to embroider the complete set. Heavy cream linen is used for



No. 6065—27 Inch Heather, Table Centre, 55 Cents



No. 5820—Scarf, 22 by 54, \$1.50.

each petal and dull browns are used for the stems.

This is the season of the year when one's thoughts turn to spring and summer clothes, and to the embroidered articles which complete them. The present styles are so simple that a handsomely embroidered collar and cuffs are all the trimming they need, and No. 8214 shows one of the latest ideas suitable to wear with either a suit or a one-piece dress. Colored linen appliques are basted on to the



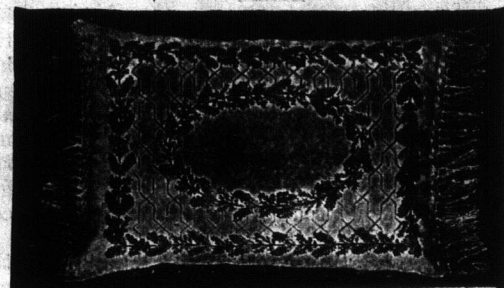
No. 8214—Collar and Cuff Set, 50 Cents.

needed to the white linen by an effective wreath design. Cuffs may be supplied to match either of these collar sets, and if preferred the colored appliques may be omitted and the entire design carried out in white.

Further description of any of these embroideries will be furnished and a diagram lesson illustrating the heather embroidery will be enclosed with any of the stamped designs ordered. Silks may be supplied to embroider any of these designs at 55 cents per

these effective embroideries and a heavy fringe matching the material is used to finish these beautiful designs. This embroidery is also effective on dark linen background worked in stronger colorings, or for dining-room use dainty pale shades may be embroidered on fine white linen.

The heather set illustrated has been embroidered in shades of reddish purple, the small green leaves are embroidered in green, one stitch being taken the full length of



No. 6506—Cushion, 60 Cents.

stamped linen foundation, and are buttonholed closely all round, cutting away the edges afterwards. The veins and dots are then embroidered on the appliques which form the rose design. The set illustrated has been embroidered on white linen with pink appliques which form the rose design. The set illustrated has been embroidered on white linen with pink appliques. The remainder of the design is solidly embroidered in white.

No. 8212 is another handsome design which also shows the colored appliques. In this case they form the border upon which are embroidered the dots. The appliques are con-



No. 8212—Collar and Cuff Set, 50 Cents.

dozen, and
had to find
Readers
the prices
linens on
pieces will
For fur
any of the
columns, a
limited, D

By Dr.

It was n
England, le
I was an
great Rail
server of e
Commons v
deavoring
ment betw

I was pa
attitude of
of the Ho
There was
position to
and gain a
nce of the
It was b
attitude n

Fifteen mil
it has ever
C.F.R., and
commenced
photograph
is now splen
a great swar

Canadian pu
that in the
there was e
the two po
differences a
endeavor to
growing imp
ing wealth
His Majesty
pears to m
at this junct
torn by indu
ly increasin
fence bears
patriots ac
During the
saw inaugu
defence, whi
comings and
move in the
this scheme
then Govern
dictated by
at least the
the other ha
ty then in p
ed by the C
parties have
dust in the
dent electo
facts, has ef
tion at issu
It is my
leaders of b
ada are qui
of action G
of stress an