

British Columbia Mills, Timber and Trading Company

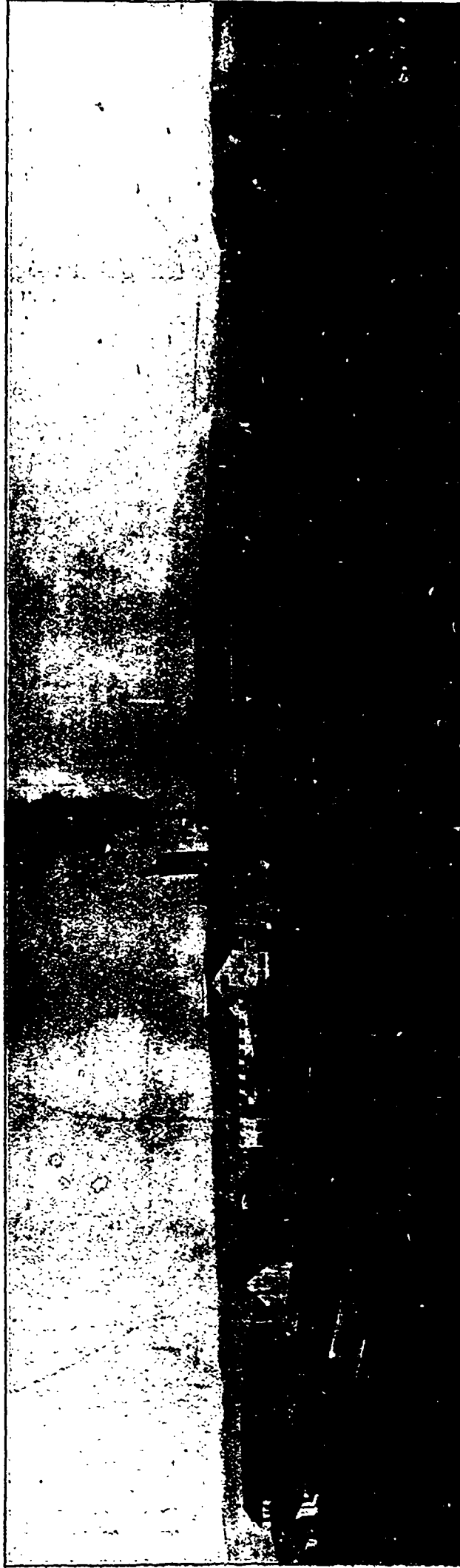
Head Office: VANCOUVER, B.C.

..... PROPRIETORS AND OPERATORS OF

The Hastings Saw Mill	{	VANGOUVER, B.C.	}	The Royal City Saw, Planing and Shingle Mills
				The Royal City Sash, Door and Box Factory

The Royal City Saw and Planing Mills	}	NEW WESTMINSTER, B.C.
The Royal City Sash, Door and Box Factory	}	(On Fraser River)

Combined 10-hour Capacity : 350,000 feet B.M. of Lumber ; 200 Doors ; 200 Windows ; 5,000 Boxes ; 160 M Shingles.



HASTINGS SAW MILL.

Facilities for shipping from three mills by Rail to all points in Canada and United States, and by Water to all parts of the World.

:::: MANUFACTURING ::::

SPARS, DERRICK MASTS, ANCHOR SPUDS, TRUSS and BRIDGE TIMBERS, SHIP TIMBER and DECKING

Capacity for Sawing up to 110 Feet and up to 36 x 36 Inches.