

## CANADA WILL DO HER ALLOTTED TASK

Greatest Period of Seeding ever Given to Production of Grain Assured.

### INCREASED AVERAGES

Wheat Provinces Will Show Far Better Results Than Before.

Within the next few weeks the farmers in Canada will be engaged upon the work of seeding the greatest average which has ever been given over to the production of grain in the history of the Dominion. While statistics portraying the actual increase in area will not be given until the federal authorities at Ottawa compile in the late spring the reports from their correspondents on work done, the findings of investigations which have already been completed point clearly to the conclusion that the additional thrust the western provinces, at least, will be very considerable in extent. Officials of the Canadian Northern recently finished a survey of fall plowing along the lines of the company in Manitoba, Saskatchewan and Alberta. The figures which were sent in, of course, deal with C. N. R. only, but they may be taken as an indication of the manner in which the farmers west of the Great Lakes have responded to the call for a greater production of foodstuffs in Canada. Five hundred and thirty-nine agents contributed to the report in order that it would be fairly representative of the territory served.

**Increase Average 40 per cent.** Altogether, along the Canadian Northern lines in the prairie provinces the increase may be averaged at forty per cent. The figures give a total acreage plowed last fall of 6,181,376 acres. This is an increase of 1,764,103 acres over the preceding year. Figures at 213 bushels to the acre—the flat average of the yield in western provinces in 1914 for wheat, oats and barley—the grain yield from fall-plowed lands along the Canadian Northern in Manitoba, Saskatchewan and Alberta would be 132,157,213.55 bushels. On the yield basis of last year the increased acreage would produce 17,755,359.04 bushels. But 1914 was an off year for grain production in the west and that average will probably be exceeded in 1915.

The largest acreage for any one station was reported from Star City, in the black loam district in Northern Saskatchewan. It was given as 116,000 and the increase over last year as 46 per cent. Naisberry, close to Star City, reported 76,000 acres. Melfort, nearly on the same line, claimed an increase of 100 per cent.

Booth reported an increase of 80 per cent. over last year. Duck Lake's 50,000 acres is an increase of 75 per cent. To the north, Hafford, on the new line connecting the cities of Prince Albert and North Battleford, reported 72,000 acres, an area 85 per cent. greater than in 1913. To the south, in the Saskatchewan, Delisle, on the Saskatoon-Calgary line, reported 35,000 acres, which is an increase of 90 per cent. Marshall, on the main line toward the Alberta boundary, returned 50,000 acres. In Alberta, the town of Hanna reported 40,000 acres, an increase of 30 per cent. Stettin, in the central portion of the province, gave 30,000, an increase of 20 per cent. Craigmyle, close to Calgary, reported 40,000 acres, and Delia, the next station, 47,000, which is an increase of 300 per cent. Two towns on the same line, closer to the Saskatchewan-Alberta line—Cereal and Chinook—reported 15,000 acres each. In the former the increase is given at 1400 per cent, while at the latter place there was no fall plowing done in 1913.

**Canada Doing Her Part.** Even in the older-settled parts of the west, there are gratifying increases. At Morris, in Manitoba, the acreage is given at 20,000, the increase 35 per cent. At Gladstone there are 20,000 acres, which represent a 25 per cent. increase. At Springfield, in the Carleton place, the agent reported 40,000, which is an increase of 15 per cent. At Dunrea in the Hartney district the figures jump to 70,000, which represents an increase of 70 per cent. Kipling reports 75,000, an increase of 90 per cent. As these are the conspicuous returns only, it is apparent that Canada is doing her allotted part of the task which is at present confronting the empire.

**RICHEST WOMAN DEAD.** Miss Mary Garrett Left a Fortune of Twenty Million Dollars. BALTIMORE, April 3.—Miss Mary Garrett, only daughter of the late John W. Garrett, died suddenly last night at the Deacony, Bryn Mawr College, Pennsylvania, where she had been living for several years. "Miss Garrett was one of the best known women philanthropists in this country. She was considered the richest woman in Maryland, her fortune having been estimated as ranging between \$15,000,000 and \$20,000,000.

**WORK HAS STARTED.** Second Section of Bloor Street Viaduct is Well Under Way. The Dominion Bridge Company, the successful tenders for the second section of the Bloor street viaduct, have started work on their contract. Construction camps have been erected and the work of grading and excavating preparatory to the putting in of the foundations is proceeding.

**OPENING OF NAVIGATION.** Commencing Thursday, April 1st, the steamer "Duchess City," of the Niagara St. Catharines Line, resumes passenger and freight service between Toronto and Port Dalhousie, where connection is made with the company's Niagara Falls, Niagara-on-the-Lake, Welland and Port Colborne. The service is daily except Sunday, leaving 1:30 p.m. leaving Port Dalhousie 8:30 a.m.

**DEATHS.** CARROLL.—On April 2nd, James, at his residence, 179 Borden street, in his 61st year. Funeral notice later.

Open a "Charge Account" for Anything You Need in the Home

## New Rugs to Supply Spring Refurnishing Needs Economically

"Regina" Vacuum Cleaners, \$12.50 Sold on Easy Terms



Two fine lots of rugs, known as "manufacturers' overmakes," that came to us under regular cost in return for placing large orders with the makers. Just as good in every way and handsome as regular lines, and so low in price Monday that there should be a rush to buy them when the big price reductions are noted:

### English Axminster Art Square

100 only, fine quality, seamless, in a good assortment of choice designs, including Oriental and conventional patterns, also plain centres, suitable for parlors, living-rooms, dining-rooms, etc. in rose, greens, blues, champagnes, etc., in the following sizes:—  
7.5 x 9.0, reg. price \$30, Monday only \$22.50  
9.0 x 9.0, reg. price \$40, Monday only \$28.50  
9.0 x 10.6, reg. price \$45, Monday only \$31.50  
10.6 x 12.0, reg. price \$50, Monday only \$35.00  
12.0 x 12.0, reg. price \$60, Monday only \$42.00  
10.6 x 13.5, reg. price \$75, Monday only \$52.50  
In floral and Oriental patterns, in tans, reds, greens, blues, and rose, suitable for bedrooms, dining-rooms, living-rooms, etc., in the following sizes and special prices for Monday:—  
6.5 x 7.5, reg. price \$15, Monday only \$11.25  
8.0 x 9.0, reg. price \$24, Monday only \$17.50  
11.2 x 12.0, reg. price \$40, Monday only \$28.50  
9.0 x 10.6, reg. price \$25, Monday only \$17.50  
9.0 x 12.0, reg. price \$32, Monday only \$24.25

### These Popular Specialties:

Hoosier Kitchen Cabinets

"Caloric" Fireless Cookers

Pullman Davenport Beds

"White" Sewing Machines

Can be bought in Toronto only in the Adams Store

## Dining Room Suites

A collection of sample suites, including six period styles, made of solid mahogany or quartered oak, fumed and golden finish, including such popular styles as Sheraton, Jacobean, Colonial, Art Craft, etc.; all have first-class construction, and interior work is of the best; best British bevel mirrors, easy running drawer guides, good locks and trimmings to match the different periods. One Art Craft design includes 72-inch buffet, with cane panelled doors and back, pedestal table, double door china cabinet and 6 diners and arm chair, upholstered back and seat in genuine leather. Regular prices range up to \$260.00. Your choice on Monday for 197.00

## Buffets \$24.65

Regular Prices Range up to \$35.00. Made of selected quarter-cut oak, fumed and golden finish, eight designs to choose from, with 46 and 48-inch cases, all fully equipped with cutlery drawers, linen drawers, cupboards, etc., with best quality locks, brass and wood trimmings; this lot includes mission, Colonial and Sheraton designs. Regular prices up to \$35.00. Special on Monday 24.65



## \$18.65 For Handsome China Cabinets

Made of selected quartered oak, golden and fumed finishes, choice of four designs, one as illustrated, with bent glass ends and door, heavy plank top, neatly shaped legs and claw feet, fitted with four display shelves, grooved for plates, wooden trimmings and lock. Regularly worth \$29.00. Clearing on Monday at 18.65

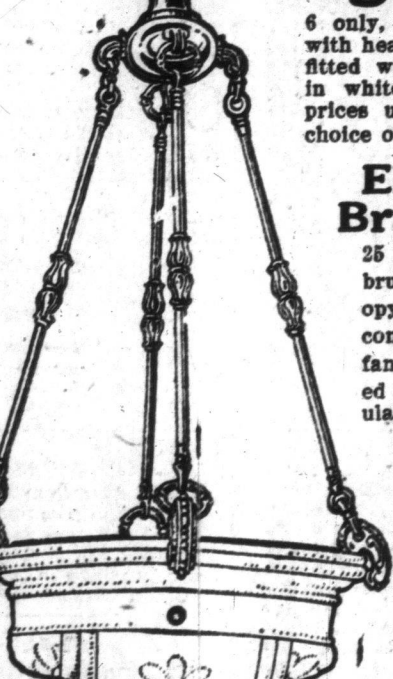
## Extension Tables

Six designs to choose from, made of selected quarter-cut oak, fumed and golden finishes, 46 and 48-inch tops, full 8-foot extensions, some equipped with duo style locks, and others have automatic extending tops; this lot comprises mission, colonial and claw foot designs. Regular prices up to \$37.00. To clear on Monday 26.50

## \$26.50 For Massive Pedestal

For Massive Pedestal

## Unusual Values in Indirect Lighting Fixtures



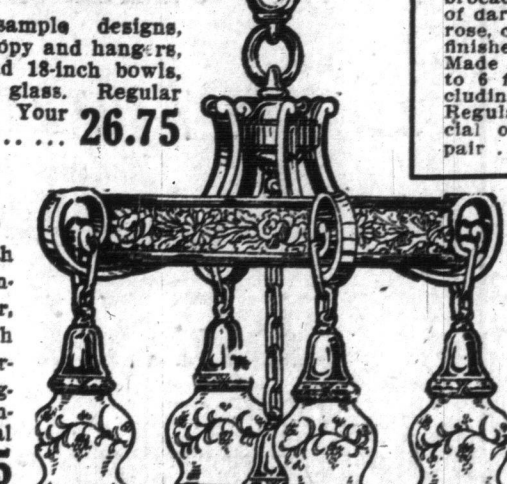
6 only, high-grade, sample designs, with heavy brass canopy and hanging, fitted with 14, 16 and 18-inch bowls, in white opalescent glass. Regular prices up to \$32.50. Your choice on Monday at 26.75

### Electric Brackets

25 only, with brass canopy and holder, complete with fancy globes, wired complete. Regularly \$1.50. Monday special for .95

### \$45 Fixtures

15 only, assorted high-class fixtures, in brass, Roman gold, Butler's silver, brass and black, etc., fitted with 4 and 5 lights, complete with globes, wired and put up. Regular prices up to \$45.00. Special on Monday for 33.75



### \$33.75

15 only, assorted high-class fixtures, in brass, Roman gold, Butler's silver, brass and black, etc., fitted with 4 and 5 lights, complete with globes, wired and put up. Regular prices up to \$45.00. Special on Monday for 33.75

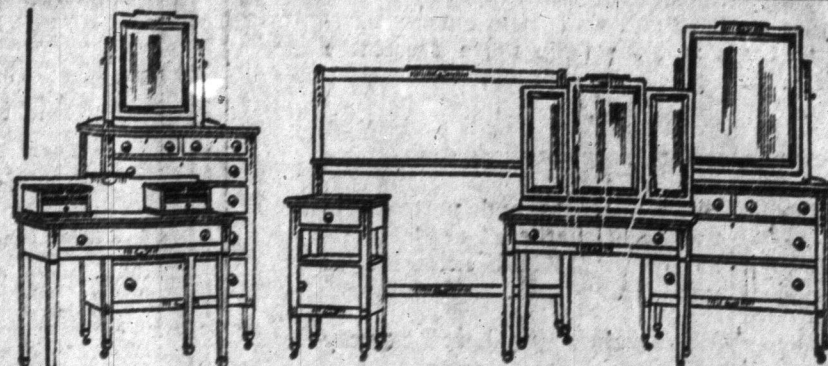
### \$25 Portieres \$17.95

Made from high-grade French linen velour, deep lustrous pile, in a good range of shades, including murre or Nile green, blue, brown, tan, old rose or red, lined with English mercerized armure in neat floral or conventional designs, poplins, repps, brocades, tapestries, etc., in shades of dark, medium or light greens, old rose, champagne, beige, brown, etc., finished with heavy silk cord edge. Made to order for any size arch up to 8 feet wide and 7 feet high, including measuring and hanging. Regular price \$25.00 per pair. Special on Monday at 17.95

### Scrim and Marquisette Curtains

Best quality, trimmed with cluny, torchon or imitation slit insertions, with hemstitched or lace edges, also novelty applique effects and drawwork, in Arab, ebru, ivory or white, 36 to 42 inches wide by 2 1/2 yards long. Regular prices up to \$5.00 per pair. Monday, at per pair 5.95

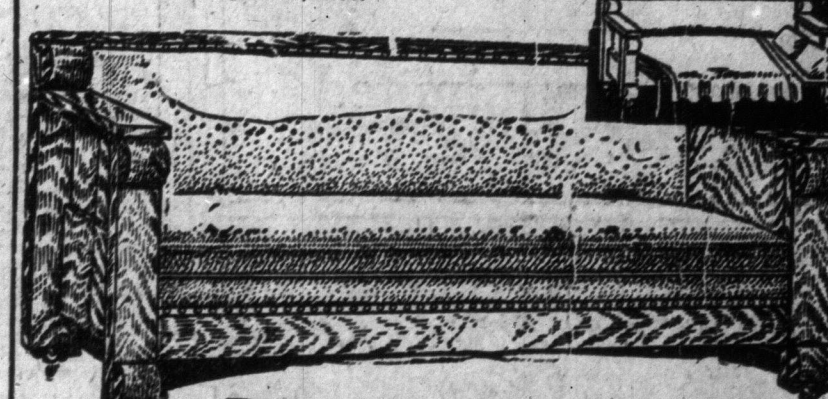
Out-of-Town Residents Should Have Our Large Illustrated Catalogue No. 33



## Money Savings of a Worth-while Sort on Bedroom Suites

**At \$69.75**—5-piece suite, similar to illustration above, consisting of dresser, chiffonier, bed, dressing table and stand, all in best quality white enamel—cases fitted with British bevel mirrors, wood trimmings, best quality locks, well finished throughout. Regular price \$95.00.

**At \$59.50**—4-piece suite, consisting of dresser, chiffonier, dressing table and stand, in choice dull mahogany—cases have best British bevel shaped mirrors, brass trimmings and locks, good interior construction, etc. Regular price \$82.00.



## Davenports \$29.75

Extra massive frames, made of selected oak, in fumed, golden or early English finish, all have upholstered spring seats, covered with brown or black leatherette; can be had in full size Davenport 7 feet over all, or 5 feet 6 inches over all, both making a complete double bed when open, and are equipped with separate bed spring and mattress, pillow rests and mattress holders. These sell regularly for \$42.50. Special on Monday at 29.75



## Parlor Suites \$48.75

Regular up to \$69.50

A collection of sample suites, in solid mahogany and birch-mahogany frames, some with panel, some with spindle, and others with upholstered backs, in a choice selection of coverings in high-grade silk damasks, moires and tapestries—eight styles to select from. Regular prices up to \$69.50. Your choice on Monday at 48.75

**Choice of Others at \$33.95—Worth up to \$50** Birch-mahogany frames, highly polished, panel backs, upholstered spring seats, covered with high-grade silk moires and tapestries—settee, arm chair and rocker to match. Regularly \$50.00. Clearing on Monday for 33.95

## Brass Bed Outfit

Including Bed, Spring and Mattress, for

## \$24.65



Regular Price is \$35.00

No Extra Charge for Credit

The Adams Furniture Company, Limited, City Hall Square