

Toronto orchestra in Europe

The Toronto Symphony Orchestra will perform 17 concerts in nine European countries from August 24 to September 19.

The tour will open with performances at the Edinburgh Festival on August 24 and 28, and continue with performances in Ireland, England, Wales, the Federal Republic of Germany, the Netherlands, Belgium, Denmark, Finland, Sweden and France.

The concert in London at the Royal Albert Hall will be broadcast by the British Broadcasting Corporation as part of its "Proms" concert series. The symphony's stops in Denmark, Finland and Sweden represent the first appearance of a major Canadian cultural organization in the Nordic countries.

Canadian pianists Angela Hewitt of Ottawa and Louis Lortie of Quebec will perform with the orchestra on the tour.

An unusual feature will be the performance of Stravinsky's ballet *The Soldier's Tale* at the Edinburgh Festival, featuring National Ballet of Canada stars Karen Kain and Peter Ottman as the princess and the soldier.

This European tour will be the orchestra's last under the direction of conductor Andrew Davis, who after 13 years with the symphony announced he will leave at the end of the 1988 season.

Dutch masterworks mark Vancouver's centennial



Jim Jardine, VAG

From left: Pieter van Vollenhoven, Princess Margriet Francisca of the Netherlands, who was born in Ottawa during the Second World War, Vancouver Art Gallery director Jo-Anne Birnie Danzker and Netherlands Ministry for Fine Art director Robert de Haase, at the gala opening on April 3 of *The Dutch World of Painting*. This was the first in a series of major international exhibitions organized by the Vancouver Art Gallery for the city's centennial and Expo celebrations. The exhibition, which runs until June 29, includes almost 100 Dutch masterworks produced between 1540 and 1880 by such artists as Frans Hals, Rembrandt van Rijn, Vincent van Gogh, Jan Steen and Nicolaes Maes. It was assembled from leading public collections in co-operation with the Netherlands Office for Fine Arts.

Canadian tour for ancient Peruvian ceramics

The largest collection of ancient Peruvian treasures to be shown in North America is touring various institutions in Canada through 1987.

The exhibition, *Ancient Cultures of Peru*, features 120 pieces representing five separate cultures — Chavin, Vicus, Nasca, Viru and Chimu — spanning the period 1200 B.C. to A.D. 1400. They were selected from the

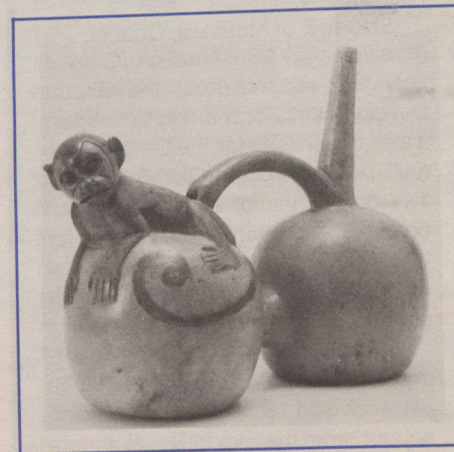
collection at the Museo des Banco Central de Reserva del Perú.

All the objects in the exhibition share common elements such as the forms and technical resources for their fabrication, and as a lesser degree, the use of colour. The main differences are in their geographical and temporal location, and in their meaning for their creators.

The ancient Peruvians imbued ceramic pieces with their unique vision of the world, moral values and religious experiences. Since the ceramics have a deep religious and mythical meaning, they are more an expression of cultural roots than of use.

Chavin pottery is frequently globular in shape and is made, without moulds, from fine clay. Vicus pottery is characterized by its rough surface (because of the quality of the local clay used) and by the variety and detail in its styling.

The Nasca were excellent potters, known for their innovative use of colour and for the variety and quality of their designs. Viru pottery was made by hand or with a mould and baked in an open oven. Most of the Chimu vessels are black, the pottery being



National Museum of Man photos

Viru culture double-chambered and conical spout vessel with zoomorphic figure representing a monkey.

burnished then smoked to achieve that distinctive colour.

The exhibition which opened at the Owens Art Gallery in New Brunswick, is on view at the Museum of Man in Ottawa. In November, it will be presented at the Art Gallery of York University in Toronto and, in 1987, it will be shown first at the University of Winnipeg and then at the Nickle Art Museum in Calgary, Alberta.



Nasca culture double spout and bridge vessel with mythological outlines.