

ALFRED WRIGHT
President

ALEX. MACLEAN
Manager & Secretary



Personal Accident	Sickness
Employers' Liability	Workmen's Compensation
Fidelity Guarantee	Elevator Insurance
Teams' Liability	Plate Glass
Automobile Insurance	

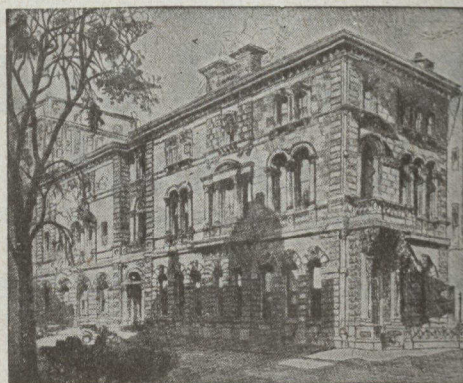
Head Office
COMPANY'S BUILDING, 61-65 ADELAIDE ST. EAST
TORONTO

BRANCHES—Quebec and Maritime Provinces.....**MONTREAL**
Manitoba and Saskatchewan.....**WINNIPEG**
British Columbia and Alberta.....**VANCOUVER**

The London Mutual Fire Insurance Company

ESTABLISHED 1859

Assets - - - - -	\$753,417.06
Surplus to Policyholders - - - - -	\$411,808.66



DIRECTORS

A. H. C. CARSON, Toronto.....	President
R. HOME SMITH, Toronto.....	Vice-President
F. D. WILLIAMS.....	Managing Director
A. C. McMASTER, K.C.	W. T. KERNAHAN
S. G. M. NESBITT	H. N. COWAN
G. H. WILLIAMS	

Head Office, 33 Scott St., Toronto

62

Size, Strength Liberality

THE Sun Life Assurance Company of Canada, with over \$340,000,000 of business in force, has all the advantages that size can bring to a life company.

With assets of over \$97,000,000 and surplus of over \$8,000,000, it has decided strength and safety.

Its policy conditions and dividend record have earned for it an enviable reputation for liberality, while its record for fair dealing is unexcelled.

For information as to contracts, communicate with the nearest Division Office, or with the Company's Head Office in Montreal.

SUN LIFE ASSURANCE
COMPANY OF CANADA
HEAD OFFICE—MONTREAL

T. B. MACAULAY - - - - - President

A Real Opportunity

For Men Who Have Had Selling Experience of Any Kind.

HERE is an independent line of work with immense opportunities for the man who has character and selling capacity. You deal with the new and rich fields of Life, Income, Pension and Indemnity insurance. You earn an income that is limited only by the energy and ability you put into your work.

We start you into business: we give you a Free Course in Salesmanship, and help you to make good. Write to-day.

Sales Department,
CANADA LIFE
ASSURANCE CO.

Toronto - - - - - Ont.

