

PAN AMERICAN EXPOSITION.

should omit the Moyer, for, unless we except Campbells Early, a variety this year bearing for the first time with us, we know of no grape of its season to compete with it in flavor. It is not the equal of its parent the Delaware, in this respect but it comes only a few points behind that excellent variety. One quality of the vine is its freedom from mildew, a disease which so often ruins our finest Roger grapes.

The bunches of the Moyer are about the same in size as those of the Delaware, usually shouldered, and sometimes double shouldered; it is fairly compact, though much looser than Delaware.

The berry is very irregular in size,

varying from half an inch to three quarters in diameter, which is not a good point. The color is amber, or where ripe, a dark wine color; pulp is tender and juicy and the flavor sweet, rich and excellent.

One great point which gives the Moyer a chance for propagation is its early season. A vine in our experimental plot ripened its fruit this season about the 20th of August, along with the miserable Champion, which has done more harm to the grape industry than a dozen fine varieties can help it forward.

We notice several other varieties coloring just after Moyer, viz., Janesville, Marion, Early Victor, Pearl, and Ohio.

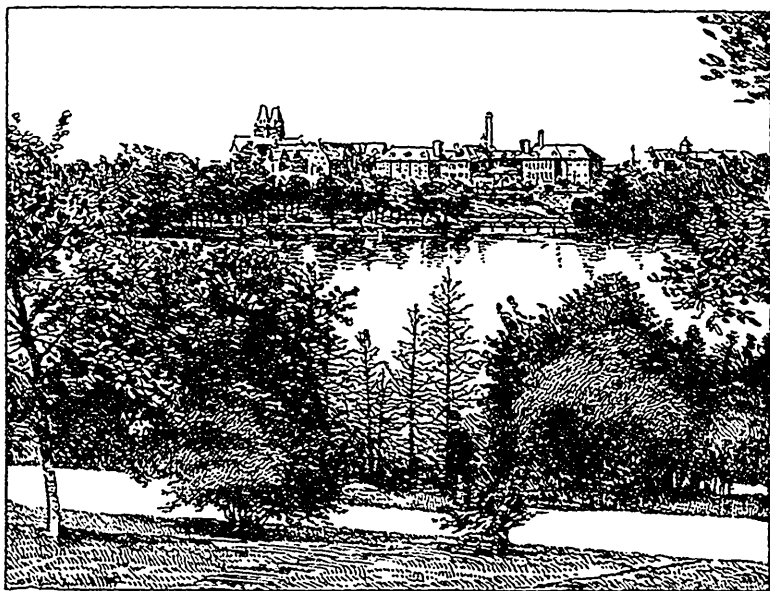


FIG. 1666.—SITE OF THE PAN-AMERICAN EXPOSITION, to be held at Buffalo in 1901; View across North Bay of Park Lake, from near the Country Club, (from Farming.)

THE PAN AMERICAN EXPOSITION, by the colonies and republics of the American hemisphere, to be held in Buffalo, N.Y., from the 1st of May, to the 1st of November, 1901. At this exposition Canada should be very prominent, and

we hope that energetic measures will be taken to make a most creditable exhibit. It is said that the management is well prepared financially to make the fair a grand success, having at their disposal \$5,800,000.