

# The Old Reliable

## LIVINGSTON'S Pure Linseed Oil Cake Meal

50 Years the Best by Test

A Food To Make Cattle Fat

TONES THE SYSTEM

Makes More Butter Fat

Send for Samples and Prices

For Sale By

All Good Feed Stores and Dealers

THE DOMINION LINSEED OIL CO., LIMITED

BADEN TORONTO MONTREAL ELORA OWEN SOUND



### The Feeders' Corner

The Feeders' Corner is for the use of our subscribers. Any interested are invited to ask questions, or send items of interest. All questions will receive prompt attention.

### Feeding Holsteins for Official Records

(Continued from page 6)

same with cows. Let them have what they want, and what they will eat up greedily, if you would have them do their best.

"The ration we use for young growing calves is as follows: Wheat Bran, 400 lbs.; Ground Oats, 300 lbs.; Oil Meal, 200 lbs.; Hominy, 300 lbs. We commence feeding this when the calves are four or five days old, placing the mixture in their feed boxes. It is before them all the time, and they lick at it as they wish. Then after the calf has learned to eat we

give, 100 lbs.; Oil Meal, 100 lbs. With this ration, as with others, the cow is to be the judge as to how much she wants. We always take the precaution to see that she does not get more than she will consume greedily at any one feed."

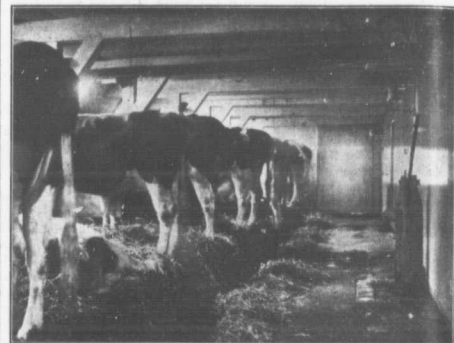
We asked Mr. Chase about feeding condiments and about mixing salt with the feed. He stated that their only practice was to sprinkle about two ounces of salt on the top of the grain feed for each cow.

Like as to the grain ration, the cow under Mr. Chase's care is to be her own judge as to how much and the kind of roughage she prefers. Corn ensilage, roots, alfalfa hay are his mainstays for roughage, and are fed in such quantities as the cow may choose. This last clause applies only to official test work.—C. C. N.

### Profitable Experience with Ayrshires

(Continued from page 7)

average weight per day of feed



A Farm Stable in the Home Land of the Holstein Breed

The illustration herewith shows the interior of the stable of Mr. D. Schumaker, Farm and Dairy's correspondent in the Netherlands. Notice how comfortably these cattle are bedded and how cleanly are the surroundings.

give it just what it will clean up nicely at a meal.

### THE RATION FOR RECORD COWS

"For our cows on heavy test work we feed the following ration: Ajax Flakes, 150 lbs. (Ajax Flakes are a by-product quite popular amongst dairy cattle breeders in the United States); Wheat Bran, 150 lbs.; Hominy, 75 lbs.; Oil Meal, 50 lbs.; Cottonseed Meal, 50 lbs.; Gluten Feed, 50 lbs. We allow the cow to be the guide as to how much of this feed she will take. A full aged cow we would start on from say 2½ to 3 lbs. a feed, and feeding four times a day—as often as we milk. We work this feed up to 10 lbs. at a feeding if the cow will take it. This means 40 lbs. of grain a day, but we have only had one cow in our experience that ever would take this much.

### PECULIARITIES IN COWS' APPETITES

"There is a wonderful difference in cows, and it is well illustrated by some experiences we have had with our cows. One of them, for instance, would only take the Ajax Flakes. Another one would eat only the Cotton Seed Meal. We fed this latter cow as high as 11 lbs. of cotton seed a day. We used to think that two pounds of cotton seed was the limit for a cow, but this cow would eat only the cotton seed, and she would eat 11 lbs. of it a day. Thus you see there can be no fixed rule for feeding test cows.

"Another ration that we have used considerably is as follows: Wheat Bran, 200 lbs.; Gluten Feed, 400 lbs.; Ground Oats, 100 lbs.; Hom-

taken by the inspectors when on their rounds: Ensilage, 240 days, average per day 25 lbs., 6,000 lbs.; bran and oats mixed, 235 days, average per day 8 lbs., 1,880 lbs.; hay, 165 days, average per day 9 lbs., 1,485 lbs.

### THE COST OF FEED

3 tons of ensilage at \$4....	\$12.00
1,880 lbs. chop at \$1.40....	26.32
1,485 lbs. hay at 60 cents....	8.91
25 bus. roots at 20 cents....	5.00
9 mos. pasture at \$1.....	1.00
Whole milk of calf.....	6.00
Skim milk for calf.....	3.00
Chop.....	1.00

Total.....\$68.83  
Leaving a balance to the credit of the heifer of \$134.27.

I did not have as many roots as I would like, nor did I have any alfalfa. I fed about two pounds a day of silage for about two weeks which I did not charge her with, but I took an account of manure which will offset this.

I have given the figures to show that pure bred cattle are more profitable for the ordinary farmer, such as I claim to be, than grades. It is true, a grade may give as much milk and as much butter fat, but they fall away behind when the offspring are taken into account. Again, a pure bred animal usually means more pains and care and there is possibly as animal that will respond to this more readily than the dairy cow.

My mind is still affected in the same way as when I started, and the cows have not laid down and died."

## Lovers of Good Dairy Cattle

And  
All Who  
Favor  
the Popular  
Rent-paying  
Mortgage-lifting  
Holstein  
Cattle

INVITE YOU to inspect my Holsteins on exhibition at the Canadian National Exhibition, Toronto, August 24th to September 7th. I will have 22 head at the Exhibition.

Prospective purchasers and others wishing stock, other than what I have on exhibition, may in a short time run out to my farm at Bedford Park, a little way north of Toronto. The electric cars run out past the farm, and there you have choice of upwards of 100 Holsteins in my herd.

I will be glad to meet you, sell you anything I may have in Holsteins, and talk business generally at the Canadian National Exhibition. Meet me at barn No. Six (6) in which my cattle will be stabled.

**Gordon S. Gooderham**

The Manor Farm Bedford Park, Ont.

Correspondence invited and will be promptly answered

The School  
Quebec  
Matthias  
tells us  
city bo  
Farm  
certain  
getting  
land,  
new bu  
equipp  
The so  
ed bar  
third  
They  
practic

At a  
barn fr  
ordinary  
pared b  
tells bo  
for any

BE