

DOMINION BRIDGE CO.

(LIMITED).

MONTREAL AND LACHINE LOCKS, P.Q.

Steel Bridges for Railways and Highways,
Steel Piers and Trestles, Steel
Water Towers and Tanks, Steel
Roofs, Girders, Beams, Columns,
for Buildings.

A Large Stock of....

**ROLLED STEEL BEAMS, JOISTS, GIRDERS
CHANNELS, ANGLES, TIES, Z BARS
AND PLATES ALWAYS ON HAND**

IN LENGTHS TO THIRTY-FIVE FEET

Tables, giving Sizes and Strength of Rolled Beams
on application.

Post Office Address, - - MONTREAL.

J. H. MCGREGOR, Agent, Canada Life Building
TORONTO, ONT.

THE

CANADIAN MANUFACTURERS' ASSOCIATION

ALBERT E. KEMP, President.

J. J. CASSIDY, Secretary.

GEORGE BOOTH, Treasurer

Secretary's Office, *McKinnon Building*

Cor. Jordan and Melinda Streets, Toronto
Tel. 1274.

THE OBJECTS OF THIS ASSOCIATION ARE:

To secure by all legitimate means the aid of both Public Opinion and Governmental Policy in favor of the development of home industry and the promotion of Canadian manufacturing enterprises.

To enable those in all branches of manufacturing enterprises to act in concert, as a united body, whenever action in behalf of any particular industry, or of the whole body, is necessary.

To maintain Canada for Canadians.

Any person directly interested in any Canadian manufacturing industry is eligible for membership.

Manufacturers desiring to hold meetings for the promotion of their business are invited to avail themselves of the Board Room of the Association for the purpose, which is offered to them free of charge.

J. J. CASSIDY, Secretary

BENT RIM WOOD SPLIT PULLEYS

← REID'S PATENT →

*The Strongest, Lightest and Best Belt Surface
in the World*



No Glue, no Nails in Rim, like Segment Rim Pulleys, to be affected by Steam Dampness or Moist Temperature.

Every Pulley Guaranteed

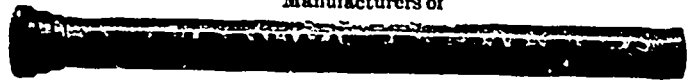
The Reid Bros. Mfg. Co., Ltd., TORONTO
ONT.

The Attention OF WOOLEN MANUFACTURERS IS CALLED TO

The Torrance Patent Self-Acting Balling Machine
and positive Creel feed for Wool cards. The latest, best and only feed on the market that will make yarn positively even. These machines are built by **The Torrance Mfg. Co.,** Harrison, (East Newark), N.J., U.S.A., for the States, and by **The St. Hyacinthe Mfg. Co.,** St. Hyacinthe, Que., Canada for the Canadian market.

DRUMMOND-McCALL PIPE FOUNDRY CO. (Ltd.)

Manufacturers of



"Specials," Hydrants, Valves, Etc.

Offices: New York Life Building, MONTREAL.

WORKS: LACHINE, QUEBEC.

REDDAWAY'S PATENT



BREAKING STRAIN 6" CAMEL HAIR BELT—14,811 lbs.

6" DOUBBLE OAK LEATHER—7,522

W.A. FLEMING.

SOLE AGENT FOR CANADA

57, ST. JAMES ST. (24 FRONT ST. E. VICTORIA CHAMBERS)
MONTREAL. TORONTO. OTTAWA

Any Advertiser may occupy this space at the
rate of 75 cents per issue.