

EXCELLENCE IS PARAMOUNT

THE

"Acme" Brand

-OF-

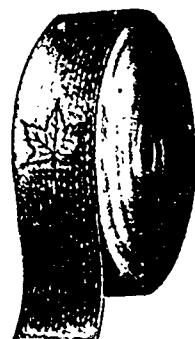
Shoe Packs, Larrigans and
Moccasins**TO THE TRADE**

I confine myself exclusively to the manufacture of this line of goods, having an up-to-date tannery, also years of experience myself. I am prepared to fill all orders promptly and guarantee to give satisfaction at lowest possible prices.

WM. A. HOLT,

ST. ANDREWS, N. B.

MADE IN CANADA

**STITCHED
COTTON
DUCK
BELTING****SUPERIOR TO ALL OTHERS**
-FOR-

Agricultural Machines, Elevators,
Pulp and Paper Mills, Cotton, Wool-
len, Cement and Saw Mills, Machine
Shops and Electric Powers.

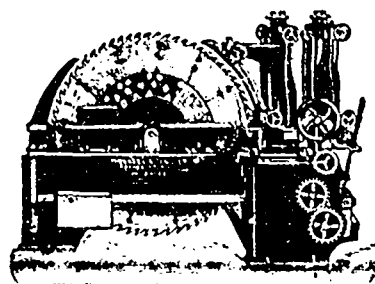
MANUFACTURED BY

DOMINION BELTING COMPANY

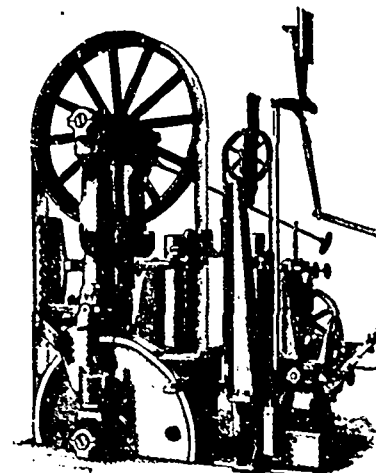
Limited

HAMILTON, CANADA
USE OUR**"MAPLE LEAF BELT DRESSING"****Gonnell & Dendler Machine Co.**

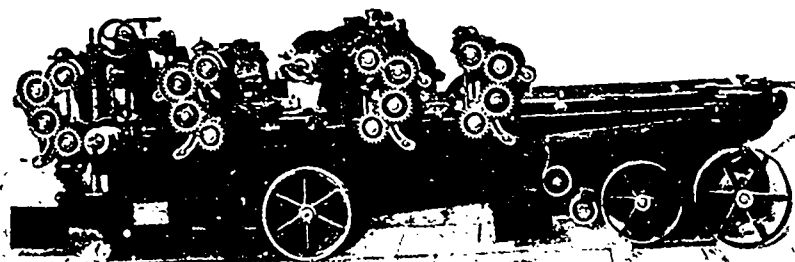
ROCHESTER, N. Y.



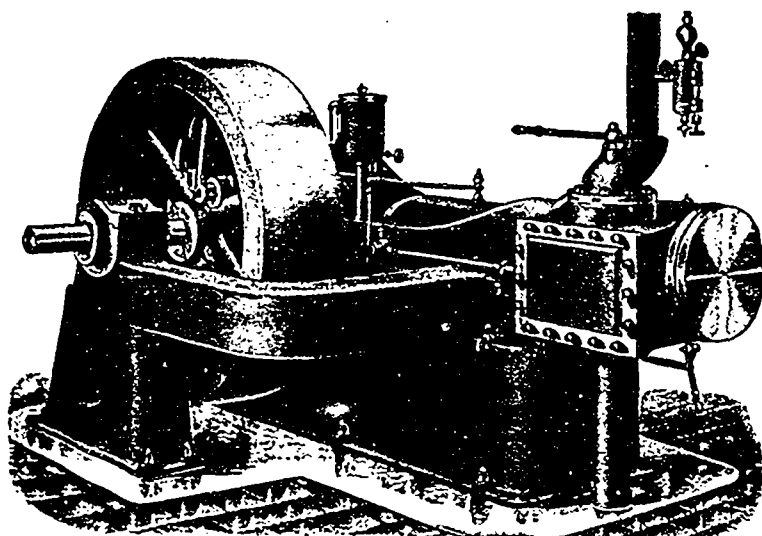
44 inch Circular Re-Saw.



60 inch Band Re-Saw

Manufacturers
of . . .**Box Makers' and
Planing Mill Machinery**

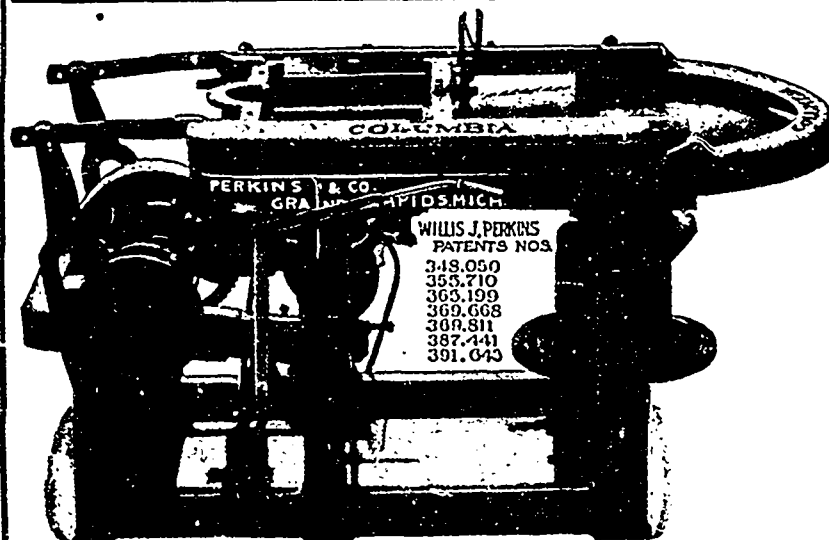
Heavy 25 inch Divided Roll Planer and Matcher with 8 Feed Rolls.

A GOOD RECORD**A CUSTOMER SAYS:**

"Your engine has been running day and night for over three years (equal to seven years' regular work) and during that time we have never lost a minute through any defect in the engine and have never expended a dollar in repairs. It is still running noiselessly and without vibration."

ROBB ENGINEERING CO., Limited
Amherst, N. S.

Agents: { William McKay, 320 Ossington Avenue, Toronto.
Watson Jack & Company, Montreal.
J. F. Porter, 355 Carlton Street, Winnipeg.

**WE SAY IT LOUD**

And we say it strong, with all the confidence that comes from knowing we can prove our assertions, that the

COLUMBIA SHINGLE MACHINE

Will make more and better shingles from the same stock than all similar machines. It's the only shingle machine made having point regulation by which you can make 1,000 additional Shingles from every 1,000 feet of logs. Isn't that worth considering—and saving? Write us about it to-day.

PERKINS & CO., Shingle, Heading and Box Board Machinery. **Grand Rapids, Mich.**