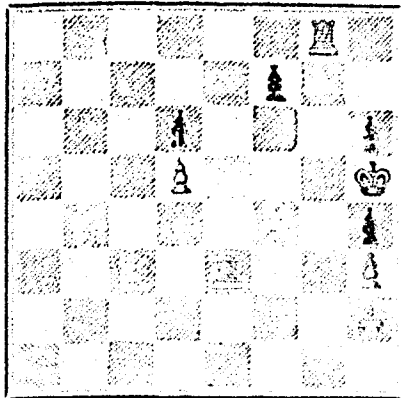


We are aware that four move problems are not great favorites with solvers in general, but the subjoined one we are tempted to insert on account of its having been highly praised for a characteristic which is not found in all compositions of the kind.

PROBLEM No. 142.

(From the English Mechanic.) By A. ARNELL, of Goteborg, Denmark. BLACK.



WHITE

White to play and mate in four moves.

GAME 20TH.

Played between Messrs. Bird and Henderson, at the Sixth Annual Congress of the Dominion Chess Association, held at Quebec, 1877.

WHITE.—(Mr. Henderson) BLACK.—(Mr. Fletcher.)

- 1. P to K4 2. K to KB3 3. B to B4 4. Castles 5. P to Q3 6. B to K Kt5 7. P to KR3 8. B to QR4 9. B to KR4 10. K to B3 11. K to Q5 12. B takes B 13. B takes K 14. K to R4 15. K to R2 16. B takes K 17. Q to K2 18. P to QB3 19. P to KB3 20. Q to R sq 21. P to QR4 22. Q to Q2 23. P to QR3 24. P to QB4 (a) 25. R to K Kt5 26. Q to K2 27. K to B sq 28. P to K4 29. P to KR4 30. R takes B 31. Q to KR2 32. P to Kt1 33. B to QR sq 34. K to Q2 35. P to KR5 36. P takes RP 37. B to Kt5 38. QR to K Kt sq 39. Q to R3 40. P takes P 41. Q to Kt4 42. R takes P 43. K to Kt3 44. K takes P

NOTES.

- (a) The right move. (b) Q to R5 seems better. (c) Losing a piece. (d) Black plays carefully in order to retrieve his game, but it is uphill work with the loss of a piece.

GAME 20TH.

Played some time ago in the United States in a match between Mr. Bird and Mr. Minchin.

- WHITE.—(Mr. Bird) BLACK.—(Mr. Minchin) 1. P to KB4 2. P takes P 3. P takes P 4. Kt to KB3 5. P to K4 6. P to Q3 7. B to KR5 8. B to K2 9. B takes B 10. Kt to QB3 11. Q to Q2 12. Kt to Q sq 13. B to K3 14. B takes B (a) 15. Q to B2 16. Q to Q2 17. Kt to B3 18. Q to KB2 19. B to Q sq 20. Kt to Q5 21. P takes R 22. Q to Q2 (c)

And Black wins.

NOTES.

- (a) White should have castled here, with the better game. (b) An excellent move. (c) Losing the Q in a few moves.

SOLUTIONS.

Solution of Problem No. 140.

- WHITE. 1. R to Q5 2. B takes P 3. R mates

- Solution of Problem for Young Players, No. 138. WHITE. 1. K to Q B6 2. Q mates accordingly.

PROBLEMS FOR YOUNG PLAYERS NO. 139.

- WHITE. K to QB7 R to QB2 B to K5 B to KB5 Pawns at K3, and Q R4 and Q Kt3

White to play and mate in three moves.



AND ACADEMY OF PHYSICAL EDUCATION.

Mr. BARNJUM begs to announce that Classes will commence 1st OCTOBER.

Prospectuses, containing full particulars of hours and fees, can be obtained at the Gymnasium, 19 University Street.

The highly successful exhibition given at the Skating Rink in May fully proved the

roughness of the system of teaching in this institution, and all young men who value a sound body should enrol themselves as members.

Mr. Barnjum would call special attention to his Classes for Ladies and Children, which are highly recommended by the most eminent physicians of Montreal.



R. RITCHOT, COACH MAKER.

No. 159, St. Antoine St., Montreal. A large assortment of Phaetons and Sleighs of various kinds always on hand. Repairs promptly attended to.

BODY FOUND OF A WOMAN ELEGANTLY DRESSED!!

ON ST. JAMES STREET.

VERDICT!!

On an intelligent Jury the People as being the result of a visit to

The Fashion Parlor, 435 NOTRE DAME ST.,

Butterick Patterns, AND SALESDROOM OF HOWE SEWING MACHINES.

\$12 a day at home. Agents wanted. Outfit and terms free. TRUE & CO., Augusta, Maine.

\$5 to \$20 per day at home. Samples worth \$5 free. STINSON & CO., Portland, Maine

British American BANK NOTE COMPANY, MONTREAL.

Incorporated by Letters Patent. Capital \$100,000.

General Engravers & Printers

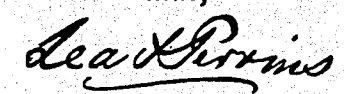
Bank Notes, Bonds, Postage, Bill & Law Stamps, Revenue Stamps, Bills of Exchange, DRAFTS, DEPOSIT RECEIPTS, Promissory Notes, &c., &c., Executed in the Best Style of Steel Plate Engraving. Portraits a Specialty. G. B. BURLAND, President & Manager.

TO LET

FIRST-CLASS BRICK DWELLING, No. 1464 Abbottsford Terrace (opposite Emmanuel Church), St Catherine Street, in good order, well drained, and rat proof. Rent moderate.

Apply to G. B. BURLAND, Burland-Desbarats Lith. Co., Bleury St.

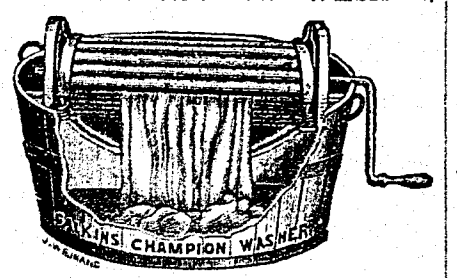
In consequence of spurious imitations of LEA AND PERRINS' SAUCE, which are calculated to deceive the Public, Lea and Perrins have adopted A NEW LABEL, bearing their Signature, thus,



which is placed on every bottle of WORCESTERSHIRE SAUCE, and without which none is genuine. Ask for LEA & PERRINS' Sauce, and see Name on Wrapper, Label, Bottle and Stopper. Wholesale and for Export by the Proprietors, Worcester; Crosse and Blackwell, London, &c., &c.; and by Grocers and Oilmen throughout the World.

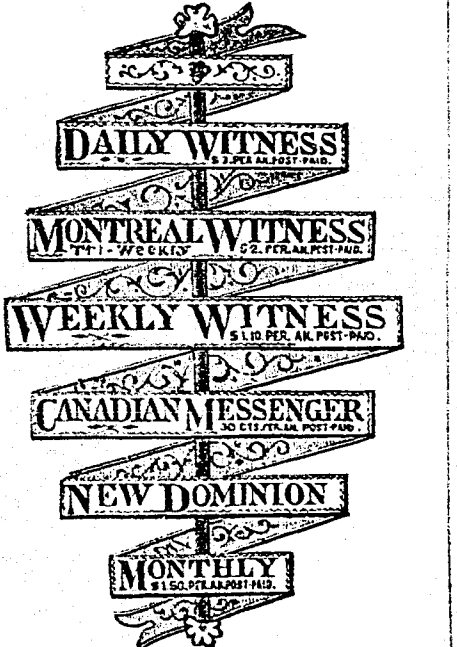
To be obtained of MESSRS. J. M. DOUGLASS & CO., MONTREAL; MESSRS. URQUIHART & CO., MONTREAL.

MARVEL OF THE AGE! No House can be comfortably conducted without a CALKINS CHAMPION WASHER.



The most complete success of any invention that has ever been introduced. It washes perfectly and easily, without any hard work or wear to the clothes. Saves its cost, which is only \$7.50, in six months. No Family ought to be without one. Manufactured and sold by STOCKTON, ROSSITER & CO., 102 King Street West, Toronto. LAMMONT & SONS, 33 College Street, Agents for Montreal. 16-9-52-252

CHEAPEST AND BEST.



JOHN DOUGALL & SON, 218 and 220, St. James Street, Montreal. Electrotyping and Job Printing, Chromatic and Plain cheaply and neatly done.

THOS. CREAM, MERCHANT AND MILITARY TAILOR. (LATE MASTER TAILOR IN H.M.S.) SCOTCH TWEEDS, and ENGLISH SERGES BLACK, BLUE, and GREEN, for Suits, always on hand. No. 435, Yonge Street, TORONTO.

OTTAWA RIVER NAV. CO'S STEAMERS BETWEEN MONTREAL AND OTTAWA. Passengers by Day boat leave Montreal and Ottawa every morning at 7 a.m. By Night boat leave Montreal and Ottawa at 5 p.m., except on Saturday. Baggage checked through. Tickets at 13 Bonaventure St. and at Railway Station, Montreal, and at O'Boe, Queen's Wharf, and Russell House, Ottawa. R. W. SHEPHERD, President.

DR. A. PROUDFOOT, OCUList AND AURIST. Artificial Eyes inserted. Residence, 37 Beaver Hall, Montreal. 15-8-52-210

WORK FOR ALL In their own localities, canvassing for the Fireside Visitor. (enlarged) Weekly and Monthly. Largest Paper in the World, with Mammoth Chromes Free. Big Commissions to Agents. Terms and Outfit Free. Address P. O. VICKERY, Augusta, Maine. 16-12-52-290

JOHN McARTHUR & SON, OIL, LEAD, PAINT, COLOR & VARNISH MERCHANTS IMPORTERS OF

English and Belgian Window Glass, Rolled, Rough and Polished Plate Glass, Colored, Plain and Stained Enamelled Sheet Glass, PAINTERS' & ARTISTS' MATERIALS, BRUSHES, CHEMICALS, DYE, STUFFS, NAVAL STORES, &c. 310, 312, 314 & 316 ST. PAUL ST., AND 253, 255 & 257 COMMISSIONERS ST. MONTREAL. 15-24-52-268



CAUTION.—A great many Gentlemen buy their Shirts ready-made with a view to economy. If you really wish to study economy, the best way is to order your Shirts, which will cost no more and will keep clean longer than ready-made. Printed instructions and price list sent free. Address: A. WHITE, 53 KING ST. WEST, TORONTO. 15-23-13-265

THE COOK'S FRIEND BAKING POWDER

Has become a HOUSEHOLD WORD in the land, and is every family where Economy and Health are studied. It is used for raising all kinds of Bread, Rolls, Pan cakes, Griddle Cakes, &c., &c., and a small quantity used in Pie Crust, Puddings, or other Pastry, will save the usual shortening, and make the food more digestible.

THE COOK'S FRIEND

SAVE TIME. IT SAVES TEMPER. IT SAVES MONEY. For sale by storekeepers throughout the Dominion and wholesale by the manufacturer. W. D. McLAREN, UNION MILLS, 15-17-52-249 35 College Street J. K. MACDONALD, BLACKSMITH, BELL HANGER, LOCK SMITH &c., 24 Latour Street, Montreal. REPAIRS PROMPTLY ATTENDED TO. 15-18-52-238

NOTICE TO THE PUBLIC. CANADIAN MECHANICS' MAGAZINE AND PATENT OFFICE RECORD.

This VALUABLE MONTHLY MAGAZINE has been much improved during the past year, and now embodies within its pages the most Recent and Useful information published connected with Science and the different branches of Mechanical Trades, selected with particular care, for the information and instruction of Mechanics in Canada. A portion of its columns is devoted to instructive reading, suitable for the younger members of a family, of either sex, under the title of the

ILLUSTRATED FAMILY FRIEND, SUCH AS FLORAL CULTURE, NATURAL HISTORY, POPULAR GAMES AND AMUSEMENTS, LADIES' FANCY AND NEEDLE WORK, AND SHORT PLEASING STORIES, ALSO SELECTED NEW MUSIC, DOMESTIC RECEIPTS, &c.

The Canadian Mechanics' Magazine, with the addition of the Illustrated Family Friend AND PATENT OFFICE RECORD, Contains 16 full pages of Superior Illustrations and about 125 diagrams of all the Patents issued each month in Canada; it is a work that merits the support of every Mechanic in the Dominion, whose motto should always be "SUPPORT HOME INDUSTRY." Price, only \$2.00 per annum. BURLAND-DESBARATS LITH. CO., PROPRIETORS AND PUBLISHERS, 5 and 7 BLEURY STREET, MONTREAL. F. N. BOXER, Architect, Editor.