

## AT THE BIG FEED DEPOT.

**Gluten Meal,  
Corn Meal,  
Bran,  
Black Oats,  
White Oats.**

**And Prime  
Timothy Hay.**

**F. McNAMARA,  
Queen Street.**

s,tu,th,fr

### J. J. St. JOHN.

**In Stock and to  
Arrive:**

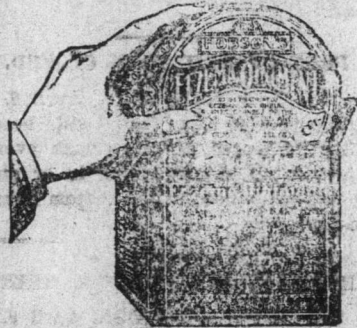
800 brls. Flour—All Choice Brands.  
150 bags Yellow Corn.  
100 bags Corn Meal.  
200 bags Bran.  
150 bags Black Oats.  
50 brls. Granulated Sugar  
30 brls. Ham Butt Pork.  
25 brls. Libby's S. P. Beef  
10 brls. Pork Loin.  
50 cases Sunlight Soap—12 oz. bars.  
25 cases C. C. Beef—6 lb. tins.  
25 cases C. C. Pork—6 lb. tins.  
250 gross Seadog Matches.  
30 barrels Holyrood Cabbage.

**J. J. St. JOHN,  
Duckworth St. & LeMarchant Road.**

### HAVE YOU ECZEMA?

THE MARVEL OF THE AGE.

**Dr. Hobson's  
Eczema Ointment**  
Cured Others. Will Cure You.  
TESTIMONIALS ON REQUEST.



I say to your face that no sores or eruptions need be if you use DR. HOBSON'S ECZEMA OINTMENT. Backed by their guarantee. Your money back if it fails. Price 50c. DR. HOBSON'S DERMAMA ZEMA and SKIN SOAP is unsurpassed for purity. It purifies, soothes, heals and softens the skin. Skin troubles disappear after using Dr. Hobson's DERMAMA ZEMA and Skin Soap. Price 25c.

Write  
**JAS. F. WISEMAN,**  
Broadway Store, St. John's,  
Wholesale & Retail,  
for any information concerning these Remedies.  
feb10,2m,s,tu,th

## THE BEST IS THE CHEAPEST.

**JOHNSON'S FANCY  
BAKERY.**

**TWO STORES! TWO PHONES!**  
J. T. Calver, Oyster Bay Parlors,  
Phone 739. Phone 710a.



The woman who has a complexion that is naturally youthful and velvety is the envy of those who are not so fortunate. But a good or bad complexion usually indicates the amount of care you bestow on your skin. You cannot have a bright, clear skin unless you keep your skin clean—if you do not protect it from the ravages of cold winds and other enemies.

### NYAL FACE CREAM

is a delightful preparation that will help you towards your aim of a beautiful complexion. It is pure, soothing and stimulating, giving a glow and pleasant sensation of health when applied to the skin. It helps nature overcome wrinkles, pimples, roughness and blotches and imparts that clear, velvety texture that you like to see and touch.

Price 25c. and 50c. a jar.  
SOLD ONLY AT

**Nyal  
Quality Stores**

McMURDO'S, Rawlin's Cross,  
STAFFORD'S PHARMACY, Duckworth Street.  
DR. F. STAFFORD & SON, Theatre Hill.  
PETER O'MARA, West End.

feb26,3m,ed

### Grand Dramatic Performance

(In aid of a most praiseworthy object)

**Casino April 12th and 13th.**

Under the management of MR. CHARLES HUTTON.  
A ROARING COMEDY.

**"The First Night; or, a Peep  
Behind the Scenes."**

Strong cast. Splendid acting. A laugh from start to finish.  
Many specialities introduced.

**Orchestra and C. C. C. Band.**

Doors open at 7. Performance at 8.30. Admission—Dress Circle, 75 cents; Reserved Seats, 50 cents, at Atlantic Bookstore. Gallery, 50 cents; Pit, 20 cents. apr5,11

## Ladies!

THIS WEEK WE OFFER

**A Splendid Selection**

— OF —

# BLOUSES

AT ONLY

**\$1.00 each.**

This range includes a very fine assortment of White, Black and Coloured Blouses, and the values are Extra Special.

**See Our Window Display  
of these Dainty \$1.00  
Blouses.**

We have also just opened many other Blouses at other prices which are also good values, and you can save money by buying your Blouses here now, as at other times, as we have bought these goods well and have marked them low to help you out on the High Cost of Living.

## Henry Blair

Advertise in the TELEGRAM

## RED WING THE GRAPE JUICE

with the better  
flavor.

**BAIRD & CO.,**  
Agents.  
181 WATER ST.  
P. O. Box 157.

### A Royal Smoke



**Bengal  
Little Cigars.**

The man who smokes them says it is the Best Cigar Value in the World.

10 for 25c.

## CASH'S

Tobacco Store, Water Street.

## Your Business Success in 1917

tests upon the dependability of your service of supply.

Three big facts—big buying power, tremendous production, expert workmanship—stand behind our claims of superior service.

It will pay all merchants to see our spring ranges in

**Men's and Boys'  
Suits, Overalls,  
Shirts, etc.**  
DO IT NOW.



**Newfoundland Clothing Co., Ltd.**

## A SNAP!

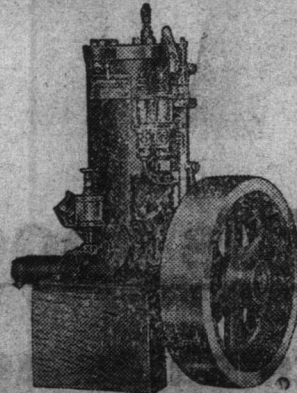
We offer for immediate delivery,

**One 1917**

**OVERLAND AUTOMOBILE,**

Slightly used; Guaranteed  
in perfect order.

**T. A. MACNAB & Co.**



### LATHROP

Make and Break

**Kerosene Engines,**  
Strong, Heavy and Reliable.

Also

**Gray, Ferro and Fulton**

The Fulton is self-sparking;  
no coils or batteries required.

**SCRIPPS 4 CYCLE.**

The standard in 4 cycle engines.

**A. H. MURRAY, St. John's, Agent.**

Advertise in the Telegram

## REID-NEWFOUNDLAND COMPANY.

### Easter Excursion!

Between St. John's, Carbonear, Heart's Content, Placentia and Renew's.

#### One Way Fare.

Good going Saturday, April 7th, and good returning Monday, April 9th.

#### One Way and One Third Fare.

Good going Thursday and Friday, April 5th and 6th, and good returning Monday, April 9th.

**Reid-Newfoundland Co.**



## Easter.

Easter is now drawing near, and every Foot will want to appear well dressed on Easter Sunday!

Easter and Poor Footwear are incompatible.

Our Store is now in the full bloom of Easter freshness, with handsome new Spring Shoes greeting you at every turn.

#### MEN'S SHOES.

The Best of Dull, Bright or the new Tan leathers!

Conservative Shoes or the very limit of style for the Young Men. Handsome new Shoes of Patent Leather.

**\$4.50, \$5.00, \$5.50, \$8.00.**

#### WOMEN'S SHOES.

Here's elegance, indeed! The new Lace or Button Military Boots, the beautiful Gaiter Boots with Cloth Tops in choice colorings of Sand, Putty, Gray, &c., &c.

The new Bronze Boots, the new Oxfords, the very handsome new Colonials.

**\$4.50, \$5.00, \$6.00, \$7.50.**

The highest type of Footwear elegance and the best Shoe values that money can buy at any stated Shoe price

**PARKER & MONROE, Ltd.,  
THE SHOE MEN.**

## JUST IN:

# 600 Sacks CORN.

**HARVEY & CO., Ltd.**

WHOLESALE ONLY.

The "Evening Telegram" is read by over 40,000 People daily.

### EIGHT PAGES

TORONTO, Nov. 10. Tuesday. Snow and gales N. and N.W. snow. No. 1 at 10. Bar. 29.20; Therm. Drink Welch's

### VOLUME

### Auction

### AUC

At "PRINGLE residence of Mrs. Rennie's

Tuesday Next

at 10 am

1 Superior Horse, old; weight 1500 lbs; every way; kind harness.

1 Superior Cow (Jersey) 4 years old; weight 1000 lbs; every way.

1 Rubbered Tyred Cart, 1 Side Sleigh, 1 Carriage Saddle and Bridle.

1 set Cart Harness, 1 Box Cart and 1 Plough, Harrow and other Farming Utensils but one season used.

P. C. O'DRISCOLL

apr7,21

### STOR

We have store available for storage of goods. Usual rates.

**A. H. MURRAY**

mar27,17

## Grand Easter

IN AID OF ST. JOHN'S CHURCH.

The Ladies of St. John's Schoolroom, Quiddley Street, will hold a FANCY SALE on Tuesday and Wednesday. The doors will be open at three o'clock and the tables will contain a beautiful variety of fancy goods. Each of the tables will be served each evening with Home-made Candies.

Wednesday evening a concert of Vocal and Instrumental music will be given, interspersed with readings and singing by the boys and girls of the School.

General admission 10c. Mission to Canada. The doors will open for the Wednesday evening 7.5.

(In aid of the Convalescence Home for Soldiers and Sailors)

**THE REV. JOHN A. SUPERINTENDENT**

Mission will be given on Wednesday evening 7.5.

**ILLUSTRATED**

in the METHODIST CHURCH on Monday, Feb. 11, 1917.

Logging in West

A number of very fine logs will be shown.

The chair will be taken by the Hon. J. A. Roper, Minister of the Interior.

Plan of Hall at 10. Reserved Seats, 50c. General admission, 20c.

Doors open 7.30. apr7,21

### NOTICE

All persons owing against the Estate of Roper will furnish accounts, duly attested, by the 20th April. Those owing the Estate will have their accounts ready by the 20th April. After that date the accounts will be considered for collection.

**CLOUSTON**

ap3,5,7,9,11,13,15,17,19,21

### The London Dir

(Published monthly) enables traders throughout the world to communicate with one another.

**MANUFACTURERS** in each class of goods. By a complete commercial guide and its subsidiary contains lists of

**EXPORT** and Foreign Merchants with the goods they export.

**STEAMSHIP** lines arranged under the ports they sail, and including steam sailing.

**PROVINCIAL** trade of leading Manufacturers, etc., in the principal towns of the world.

A copy of the Directory will be forwarded free of charge on receipt of Postal Order for 1/6.

Dealers seeking to increase their trade can place advertisements in the

**THE LONDON DIRECTORY**

25 Abchurch Lane, London